

Form 874-9—Revised May, 1918
 U. S. Department of Agriculture
 FOREST SERVICE

*Copied
 Posted
 5/36*

N-1

----- NATIONAL FOREST

CORNERS OF THE PUBLIC SURVEY

T. 145 ----- R. 26 ----- 5 ----- Mer.

$\frac{1}{4}$ ----- Corner common to Sections
 18 ----- 13 ----- and -----

Corner consists of a ~~J-P~~ **stake** ----- (not) in place
 State condition -----

Dimensions above ground ----- inches

Sketch grooves, letters, figures, or notches, on proper face or edge.

CARDINAL POSITION

DIAGONAL POSITION

--	--	--	--

N W S E

--	--	--	--

NW SW SE NE

Mound of ----- is located -----

----- Pits are located -----

Sketch markings of Bearing Trees (or Rocks) in proper box and
 fill blanks below, giving bearings from Corner to Trees and
 Distances in Links.

Species -----

Diameter -----

Bearing -----

Distance -----

Do you believe this to be a genuine Land Office Corner? -----

If not, why? -----

(Signature)

(Date)

(Title)

Section 10, Township 40 N, Range 10 W

CORNER OF THE PUBLIC SURVEY

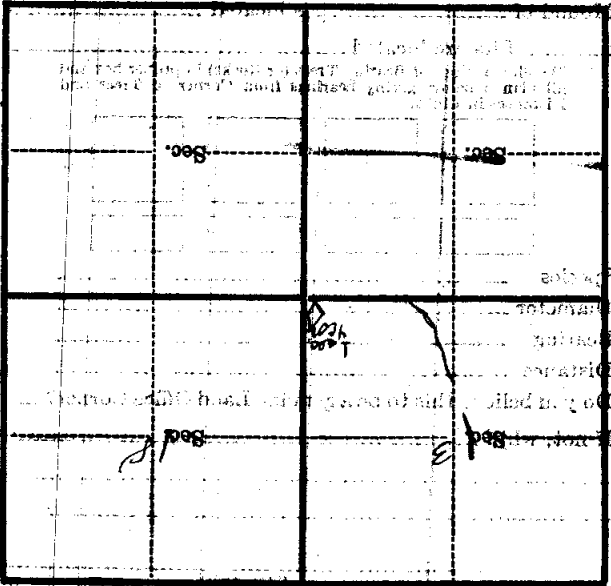
Give any further facts which will aid in finding this

from which this Corner bears

side of

tree inches diameter, on the

Metal Location Poster is on a



(Make sketch of topography near Corner)

Form 874-9—Revised May, 1918
 U. S. Department of Agriculture
 FOREST SERVICE

*Copied
 Posted
 5/36.*

----- NATIONAL FOREST **N-1**
CORNERS OF THE PUBLIC SURVEY

T. 145 ----- R. 26 ----- 5 ----- Mer.

----- Corner common to Sections
 18, 19, 15 and 24

Corner consists of a new stake in J P clump (no) in place

State condition -----

Dimensions above ground ----- inches

Sketch grooves, letters, figures, or notches, on proper face or edge.

CARDINAL POSITION

DIAGONAL POSITION

--	--	--	--

--	--	--	--

N W S E

NW SW SE NE

Mound of ----- is located -----

----- Pits are located -----

Sketch markings of Bearing Trees (or Rocks) in proper box and fill blanks below, giving bearings from Corner to Trees and Distances in Links.

Species -----

Diameter -----

Bearing -----

Distance -----

Do you believe this to be a genuine Land Office Corner? -----

If not, why? -----

(Signature) -----

(Date) -----

(Title) -----

N E

one old B T for 19 J P 10" broken
over - stump 4 ft tree with scribe mark
laid across stump faced up - 1105 S R

Corner again.

Give any further facts which will aid in finding this

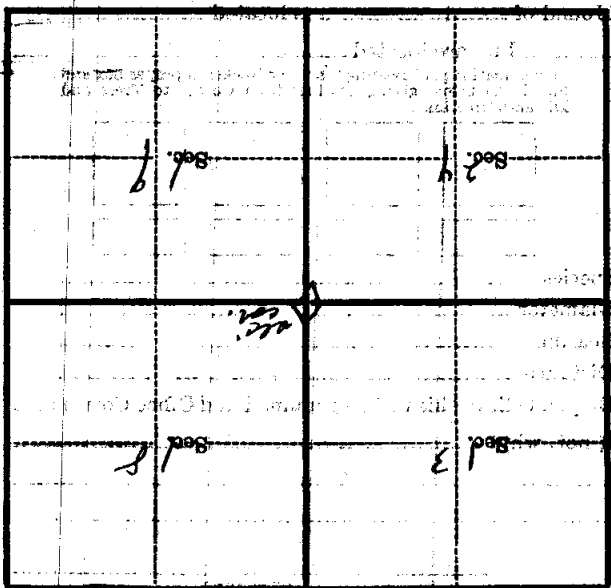
chain distant.

from which this Corner bears

side of

tree inches diameter, on the

Metal Location Post is on a



(Make sketch of topography near Corner)