

U. S. DEPARTMENT OF AGRICULTURE
FOREST SERVICE

posted
52324

Chippewa NATIONAL FOREST

CORNERS OF THE PUBLIC SURVEY

T. 144 N R. 31 W 5th P. Mer.

N7E Corner common to Sections

12, and 13

Corner consists of a Iron Pipe (net) in place

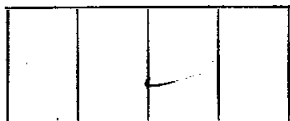
State condition Good

Dimensions above ground 8 inches.

Sketch grooves, letters, figures, or notches, on proper face or edge.

CARDINAL POSITION

DIAGONAL POSITION



Mound of ← is located ↙

Pits are located ←

Sketch markings of Bearing Trees (or Rocks) in proper box and fill blanks below, giving bearings from Corner to Trees and Distances in Links.

T144N
R30W
N7E S12

T144N
R30W
N7E S13

BT

BT

Species N. Pine S. Pine

Diameter 12" 10"

Bearing N45°E 55°E

Distance 30' 9'

Do you believe this to be a genuine Land Office Corner? yes

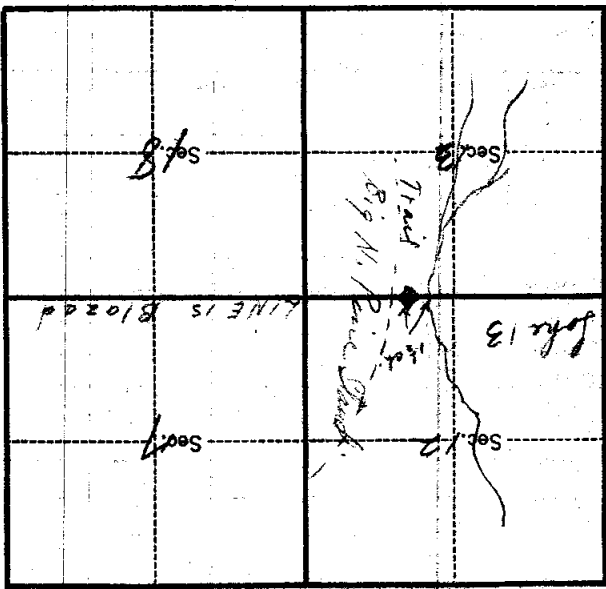
If not, why? _____

Hubert K...
Signature.

11-11-31
Date.

Estimator
Title.

(Make sketch of topography near corner.)



Metal Location Poster is on a _____ inches diameter, on the _____ side of _____ from which this Corner bears _____ chains distant.

Give any further facts which will aid in finding this Corner again.

Corner in Section marked
 figure west of Lake Mores
 Post than shown being in
 heavy timber trail east
 and west is found to be
 clearly established to be
 about 15 chains west of
 Sec. 13 corner to this