

U. S. Department of Agriculture
FOREST SERVICE

Posted

Chippewa NATIONAL FOREST

21

CORNERS OF THE PUBLIC SURVEY

T. *T14N* R. *30W* *5th* Mer.

Lot Corner common to Sections

31

Corner consists of a *Br. caped pipe* (not) in place

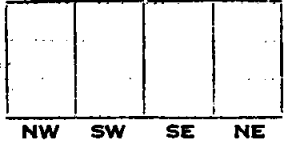
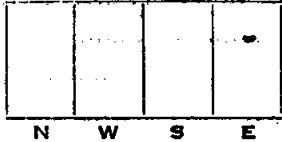
State condition *good*

Dimensions above ground _____ inches

Sketch grooves, letters, figures, or notches, on proper face or edge.

CARDINAL POSITION

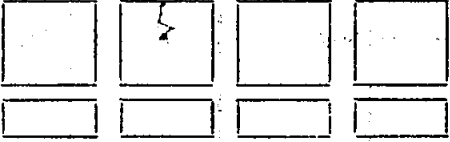
DIAGONAL POSITION



Mound of _____ is located _____

Pits are located _____

Sketch markings of Bearing Trees (or Rocks) in proper box and fill blanks below, giving bearings from Corner to Trees and Distances in Links.



Species _____

Diameter *No Bearing Trees*

Bearing _____

Distance _____

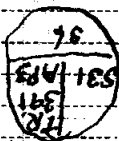
Do you believe this to be a genuine Land Office Corner? *Yes*

If not, why? _____

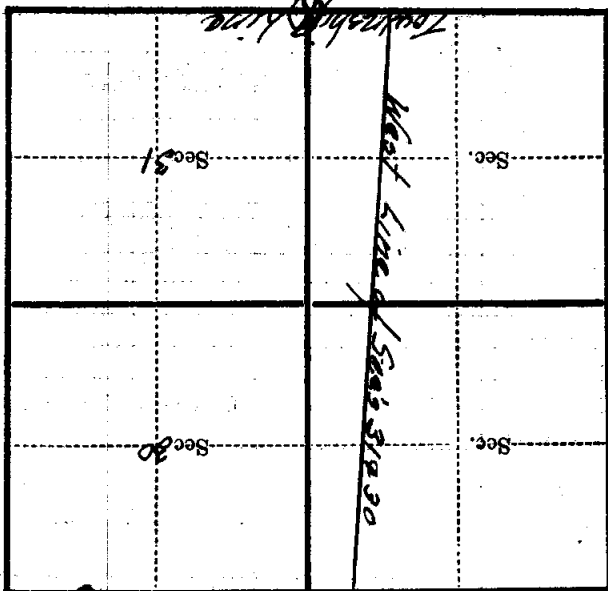
Wm. B. Rose
(Signature)

Compassman
(Title)

8/20/34
(Date)



Metal Location Poster is on a *Name* tree *inches* diameter, on the *side* of *from* which this Corner bears *chains* distant. Give any further facts which will aid in finding this Corner again.



(Make sketch of topography near Corner)

T 199N R 30W
 5-11-2
 Mer.