

U. S. Department of Agriculture  
FOREST SERVICE

B-24

Chippewa NATIONAL FOREST

CORNERS OF THE PUBLIC SURVEY

T. 144 N. R. 30 W. 5 th. Mer.  
S 1/16 Corner common to Sections

-----, -----, and 1

Corner consists of a Metal pipe (not) in place

State condition Good Capped

Dimensions above ground 3" inches

Sketch grooves, letters, figures, or notches, on proper face or edge.

CARDINAL POSITION

DIAGONAL POSITION

--	--	--	--

N W S E

1	1	1	1
---	---	---	---

NW SW SE NE

Mound of ----- is located -----

Pits are located -----

Sketch markings of Bearing Trees (or Rocks) in proper box and fill blanks below, giving bearings from Corner to Trees and Distances in Links.

<u>NW 1/16</u> <u>S 1/16</u>		<u>NW 1/16</u> <u>S. 1</u>	
---------------------------------	--	-------------------------------	--

<u>B.T.</u>		<u>B.T.</u>	
-------------	--	-------------	--

Species Tamarack Tamarack

Diameter 11" 14"

Bearing S53 30 E S61 30 W.

Distance 71 Lks. 142 Lks.

Do you believe this to be a genuine Land Office Corner? Yes

If not, why? -----

Lloyd Folsom

(Signature)

Dec. 3, 1936

(Date)

(Title)

B-24

-----

-----

-----

-----

-----

-----

-----

-----

-----

-----

Corner again.

Give any further facts which will aid in finding this

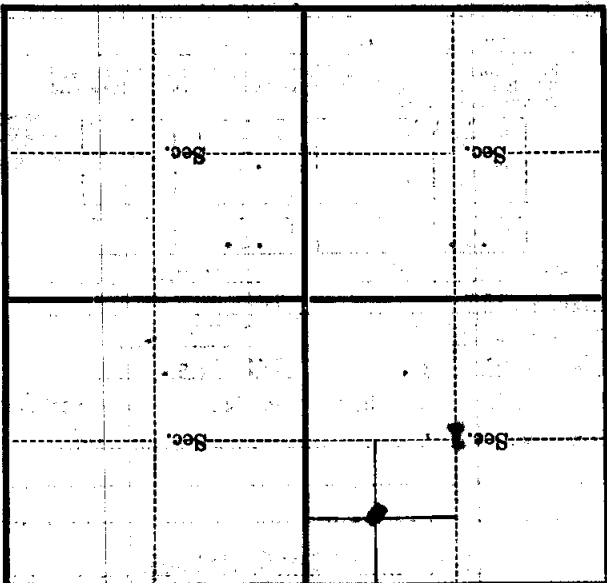
chains distant.

from which this Corner bears

side of

tree inches diameter, on the

Metal Location Poster is on a



(Make sketch of topography near Corner)

U. S. Department of Agriculture  
FOREST SERVICE

B-24  
B24

Chippewa NATIONAL FOREST

CORNERS OF THE PUBLIC SURVEY

T. 144N R. R.30W 5th Mer.  
#6 1/16

Corner common to Sections

....., and 1

Corner consists of a Iron Pipe (~~535~~) in place

State condition Good

Dimensions above ground 5 inches

Sketch grooves, letters, figures, or notches, on proper face or edge.

CARDINAL POSITION

DIAGONAL POSITION

--	--	--	--

N W S E

1	1	1	1
---	---	---	---

NW SW SE NE

Mound of ..... is located

Pits are located

Sketch markings of Bearing Trees (or Rocks) in proper box and fill blanks below, giving bearings from Corner to Trees and Distances in Links.

NE 1/16 S.1	NE 1/16 S.1		
B.T.	B.T.		

Species Tamarack Tamarack

Diameter 11" 14"

Bearing E. 53° 30' S. W 61° 3' S.

Distance 71.1 lks 142.4 lks.

Do you believe this to be a genuine Land Office Corner? Yes

If not, why? .....

Lloyd Folsom

(Signature)

Dec. 3, 1936

(Date)

(Title)

B-24

Geological Survey

Washington, D.C.

REPORT OF THE

COMMISSIONER

OF THE BUREAU OF LANDS

1922

1922

1922

Corner consists of a ...  
Corner again ...  
Give any further facts which will aid in finding this ...  
change distant ...

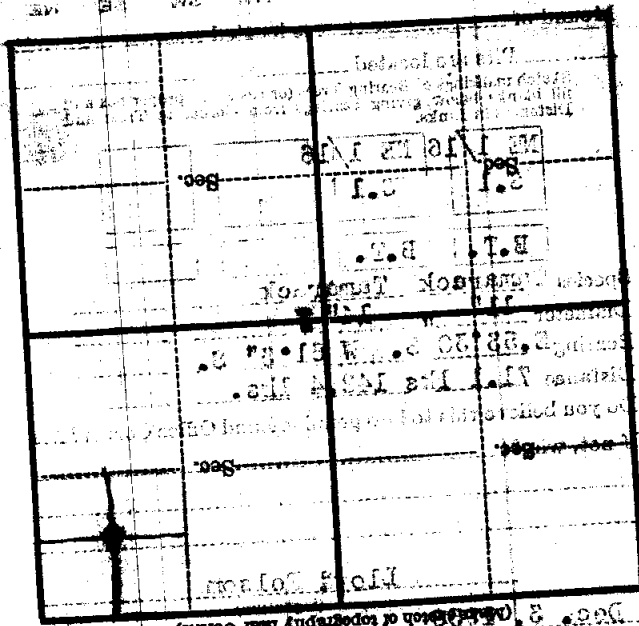
from which this corner bears

side of

tree

inches diameter, on the

Metal Location Poster is on a



(Location of topography near Corner)