

U. S. Department of Agriculture
FOREST SERVICE

Posted

Chippewa NATIONAL FOREST *E13*

CORNERS OF THE PUBLIC SURVEY

T. *144N.* R. *30W.* *5th* Mer.

Section Corner common to Sections

3, *4*, *9*, and *10*

Corner consists of a *Br. cap. iron pipe* in place

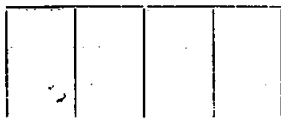
State condition *good*

Dimensions above ground *2" 18* inches

Sketch grooves, letters, figures, or notches, on proper face or edge.

CARDINAL POSITION

DIAGONAL POSITION



N W S E

NW SW SE NE

Mound of _____ is located _____

Pits are located _____

Sketch markings of Bearing Trees (or Rocks) in proper box and fill blanks below, giving bearings from Corner to Trees and Distances in Links.

<i>T144N R30W</i>			
<i>S4</i>	<i>S3</i>	<i>S10</i>	<i>S9</i>
<i>BT</i>	<i>B.T.</i>	<i>B.T.</i>	<i>B.T.</i>

Species	<i>W. Oak</i>	<i>W. Spruce</i>	<i>W. Pine</i>	<i>W. Pine</i>
Diameter	<i>16"</i>	<i>4"</i>	<i>S4° E</i>	<i>13"</i>
Bearing	<i>N25° 30' W</i>	<i>N40° E</i>	<i>20"</i>	<i>S59° 30' W</i>
Distance	<i>30</i>	<i>30 1/4</i>	<i>107</i>	<i>108</i>

Do you believe this to be a genuine Land Office Corner? *Yes*

If not, why? _____

Dorman J. Sutton

(Signature)

Compassman

(Title)

10-25-34

(Date)

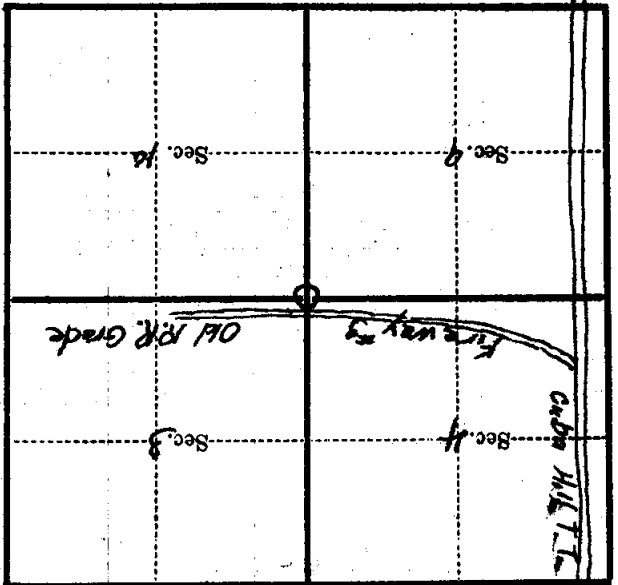
Corner again.
Give any further facts which will aid in finding this
..... chains distant.

..... from which this Corner bears *S 85° 30' E*

side of *tree*

tree ~~tree~~ inches diameter, on the *SE*

Metal Location Poster is on a *W Oak*



(Make sketch of topography near Corner)

T. L. HAN R. 30W 5th E-13 Mer.