

U. S. Department of Agriculture

FOREST SERVICE

Handwritten signature/initials

Chippewa NATIONAL FOREST

CORNERS OF THE PUBLIC SURVEY

T. 144 N R. 30 W S. 5 Mer.

Section Corner common to Sections 21, 22, 27, and 28

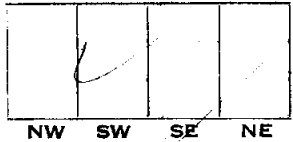
Corner consists of a Metal hub (~~not~~) in place
State condition Good

Dimensions above ground 6 inches.

Sketch grooves, letters, figures, or notches, on proper face or edge.

CARDINAL POSITION

DIAGONAL POSITION



Mound of is located

Pits are located

Sketch markings of Bearing Trees (or Rocks) in proper box and fill blanks below, giving bearings from Corner to Trees and Distances in Links.

T 144 N
R 30 W
S 27

T 144 N
R 30 W
S 28

T 144 N
R 30 W
S 21

T 144 N
R 30 W
S 22

B. T.

B. T.

B. T.

B. T.

Species	<u>Maple</u>	<u>Maple</u>	<u>Maple</u>	<u>Maple</u>
Diameter	<u>11"</u>	<u>13"</u>	<u>12"</u>	<u>10"</u>
Bearing	<u>S 22° E</u>	<u>S 25° W</u>	<u>N 50° W</u>	<u>N 13° E</u>
Distance	<u>30'</u>	<u>16'</u>	<u>24'</u>	<u>27'</u>

Do you believe this to be a genuine Land Office Corner? Yes

If not, why?

Handwritten signature
(Signature)

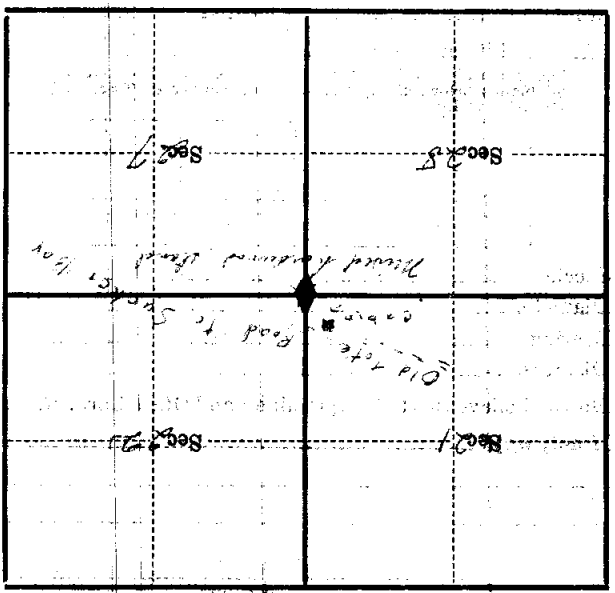
(Date)

Handwritten title
(Title)

Blank lined area for notes at the top of the page.

Sketch near corner of field
has north of it the
road and the creek
to the south. The
corner again.

Metal Location Poster is on a
tree inches diameter, on the
side of from which this Corner bears
chains distant.
Give any further facts which will aid in finding this



(Make sketch of topography near Corner)