

U. S. Department of Agriculture  
FOREST SERVICE

*Posted*  
E9

Chippewa NATIONAL FOREST

CORNERS OF THE PUBLIC SURVEY

T. 144N. R. 30W. 519 Mer.

Section Corner common to Sections  
4, 5, 8, and 9

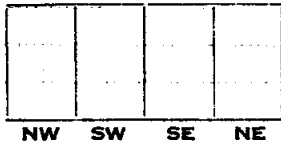
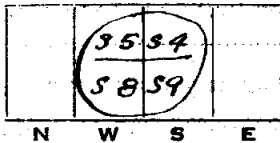
Corner consists of a Brass Caped Cement (not) in place  
State condition Good

Dimensions above ground 3" inches

Sketch grooves, letters, figures, or notches, on proper face or edge.

CARDINAL POSITION

DIAGONAL POSITION



Mound of ..... is located

Pits are located

Sketch markings of Bearing Trees (or Rocks) in proper box and fill blanks below, giving bearings from Corner to Trees and Distances in Links.

T. 144N R. 30W. 35	34	59	58
BT.	BT	BT	BT

Species ASH Cedar Birch ASH  
 Diameter 16" 7" 7" 14"  
 Bearing N. 80° 30' W. N. 30° E. S. 60° E. S. 62° 15' W.  
 Lks. Distance 12 58 79 20 1/2

Do you believe this to be a genuine Land Office Corner? yes.

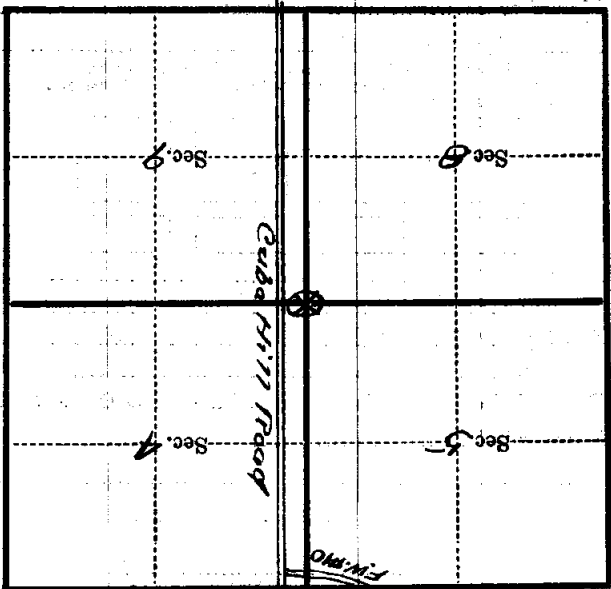
If not, why? .....

J.A. Gjelhaug  
(Signature)

10/25/34  
(Date)

Tech. Eng.  
(Title)

(Make sketch of topography near Corner)



Metal Location Poster is on a *RS4*

tree *16* inches diameter, on the *East*

side of *Tree*

from which this Corner bears *S80°30' E*

*0.12* chains distant.

Give any further facts which will aid in finding this

Corner again.

Handwritten notes and markings on the top half of the page, including a faint "1932-3" at the top left and various scribbles and lines.

T. 149N. R. 30W. 544 E-9 Mer.