

U. S. Department of Agriculture  
FOREST SERVICE

L-9

*Posted*

*Chippewa* NATIONAL FOREST L9

CORNERS OF THE PUBLIC SURVEY

T. *199N* R. *30W* Mer. *514*

*1/4* Corner common to Sections  
*17*, and *16*

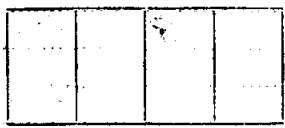
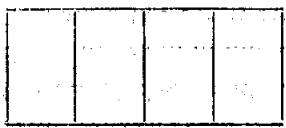
Corner consists of a *Brass capped 1"* (not) in place  
State condition *good*

Dimensions above ground *8"* inches

Sketch grooves, letters, figures, or notches, on proper face or edge.

CARDINAL POSITION

DIAGONAL POSITION



Mound of \_\_\_\_\_ is located \_\_\_\_\_

Pits are located \_\_\_\_\_

Sketch markings of Bearing Trees (or Rocks) in proper box and fill blanks below, giving bearings from Corner to Trees and Distances in Links.

<i>1/4</i> <i>S17</i>	<i>1/4</i> <i>S16</i>		
<i>B.T.</i>	<i>B.T.</i>		

Species *W. Oak. W. Birch.*

Diameter *4"* *6"*

Bearing *N68°30'W S29°15'E*

Distance *29* *73*

Do you believe this to be a genuine Land Office Corner? *Yes.*

If not, why? \_\_\_\_\_

*Dan B. Rose*  
(Signature)

*9/19/39*  
(Date)

*compassman*  
(Title)

L-9



Corner again.

Give any further facts which will aid in finding this

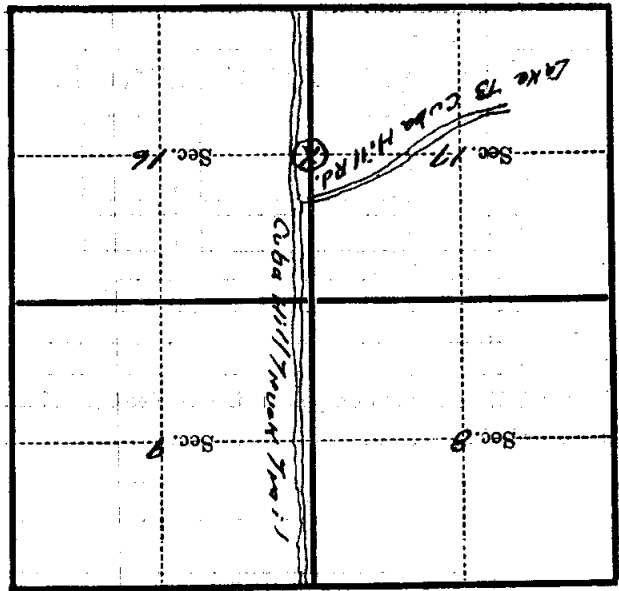
8 1/2 LKS chains distant.

from which this Corner bears S32°15' B

side of T.M.

tree 12" inches diameter, on the SE

Metal Location Poster is on a Aspen



(Make sketch of topography near Corner)

T. 199N. R. 30W

516 Mer. 7-9