

U. S. Department of Agriculture

FOREST SERVICE

protected

Chippewa

NATIONAL FOREST

CORNERS OF THE PUBLIC SURVEY

T. *144 N* R. *30 W* Mer.

Quarter Corner common to Sections

20, and *21*

Corner consists of a *Metal Hub* (~~not~~) in place

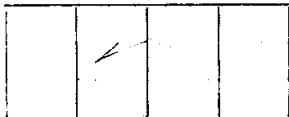
State condition *good*

Dimensions above ground *15* inches.

Sketch grooves, letters, figures, or notches, on proper face or edge.

CARDINAL POSITION

DIAGONAL POSITION



Mound of *✓* is located

✓ Pits are located *✓*

Sketch markings of Bearing Trees (or Rocks) in proper box and fill blanks below, giving bearings from Corner to Trees and Distances in Links.

T144 N
R30 W
S-20

T144 N
R30 W
S-21

B.T.

B.T.

Species *Maple* *Maple*

Diameter *7"* *11"*

Bearing *S10°W* *S66°E*

Distance *15'* *21'*

Do you believe this to be a genuine Land Office Corner? *Yes*

If not, why?

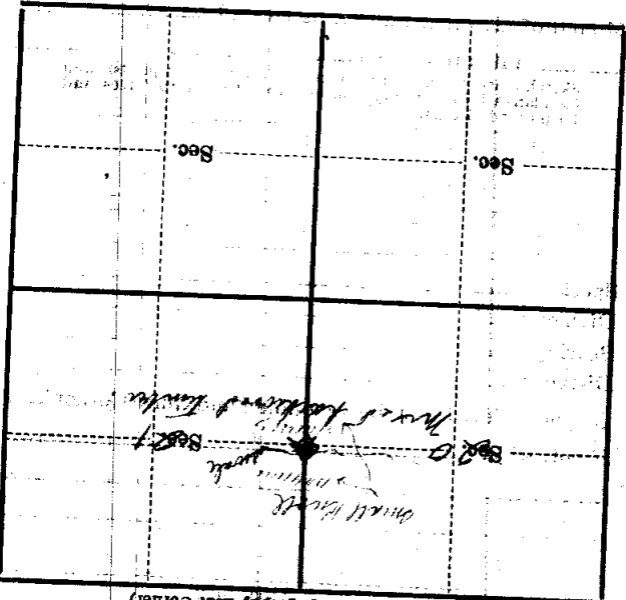
Maple Keys
(Signature)

Nov 13, 1931
(Date)

Estimator
(Title)

Metal Location Poster is on a tree ----- inches diameter, on the side of ----- from which this Corner bears ----- chains distant.
 Give any further facts which will aid in finding this Corner again.

Corner in on south side of a small creek.



(Make sketch of topography near Corner)

T. L. H. N. R. B. 3. 0. N. 5
 Mer. P. 9