

J-7

Form 874-9—Revised May, 1914

U. S. Department of Agriculture  
FOREST SERVICE

Posted 89  
57

Chippewa NATIONAL FOREST

CORNERS OF THE PUBLIC SURVEY

T. 144 N. R. 30 W. 5<sup>th</sup> Mer.

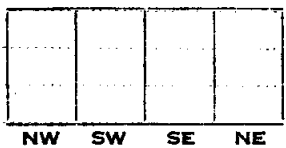
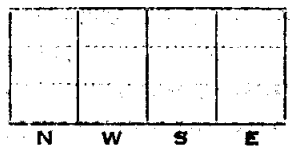
1/4 Corner common to Sections  
8, and 17.

Corner consists of a cap capped 1" (rod) in place  
State condition good

Dimensions above ground 8" inches  
Sketch grooves, letters, figures, or notches, on proper face or edge.

CARDINAL POSITION

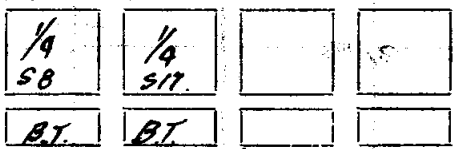
DIAGONAL POSITION



Mound of \_\_\_\_\_ is located \_\_\_\_\_

Pits are located \_\_\_\_\_

Sketch markings of Bearing Trees (or Rocks) in proper box and fill blanks below, giving bearings from Corner to Trees and Distances in Links.



Species H Maple H Maple

Diameter 2" 6"

Bearing N19°E S99 1/2°E

Distance 1 1/2 10 1/4

Do you believe this to be a genuine Land Office Corner? yes

If not, why? \_\_\_\_\_

Alan B. Rose

(Signature)

9/18/39  
(Date)

COMPASS MAN  
(Title)

J-7

58  
1/4 SW 1/4  
35

Corner again.

Give any further facts which will aid in finding this

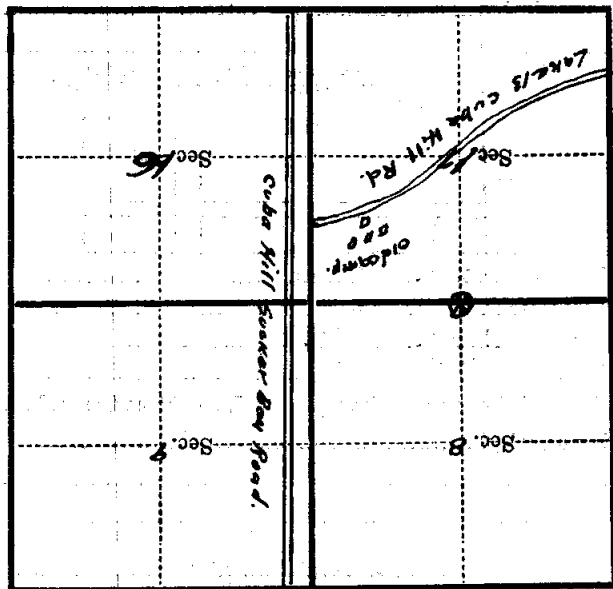
chains distant.

from which this Corner bears S 19° W.

side of the tree.

tree 6 inches diameter, on the SW

Metal Location Poster is on a H. Maple



(Make sketch of topography near Corner)