

Form 874-9—Revised May, 1918
 U. S. Department of Agriculture
 FOREST SERVICE

Chippewa NATIONAL FOREST
 CORNERS OF THE PUBLIC SURVEY

T. 144 R. 29 5th Mer.

Sec. Corner common to Sections
1, 2, 11, and 12

Corner consists of a Tree pipe (not) in place

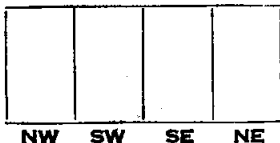
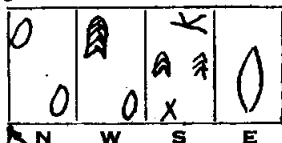
State condition good

Dimensions above ground 12 inches

Sketch grooves, letters, figures, or notches, on proper face or edge.

CARDINAL POSITION

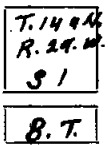
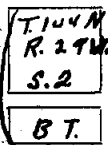
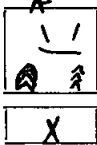
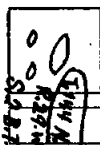
DIAGONAL POSITION



Mound of _____ is located _____

Pits are located _____

Sketch markings of Bearing Trees (or Rocks) in proper box and fill blanks below, giving bearings from Corner to Trees and Distances in Links.



Species	<u>J. P.</u>	<u>N.P. Spruce</u>	<u>N.P.</u>	<u>N.P.</u>
Diameter	<u>10"</u>	<u>20"</u>	<u>12"</u>	<u>13"</u>
Bearing	<u>N-NW</u>	<u>W</u>	<u>N 67° W</u>	<u>N 38° E</u>
Distance	<u>164</u>	<u>2.5 paces</u>	<u>75'</u>	<u>105</u>

Do you believe this to be a genuine Land Office Corner? Yes

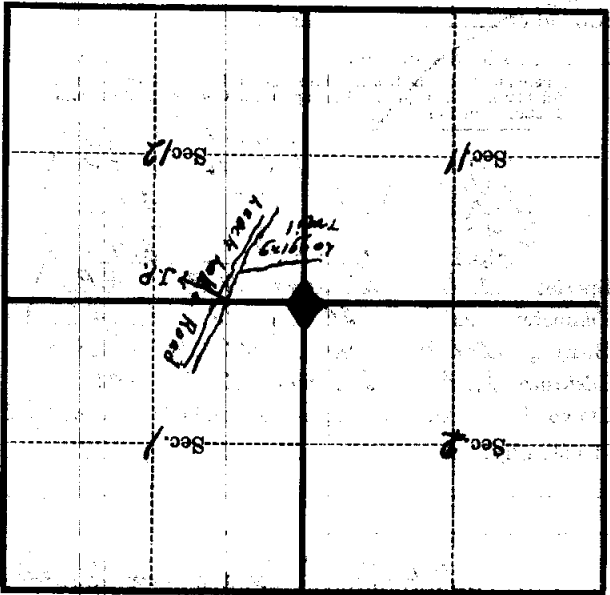
If not, why? _____

(11/20/30) (R. Willis) Max Von Waller
 Dec. 9th _____
 (Date) (Signature) (Title)
Test. Foreman
 E-21

Corner again.
Above mentioned J.P. & Forest Ser
Poster is on Leech Lake Road. J.P. has
acrotax showing W. to sec. Cox. NP
S.M. can be seen from Road in
Winter

Give any further facts which will aid in finding this
// chains distant.

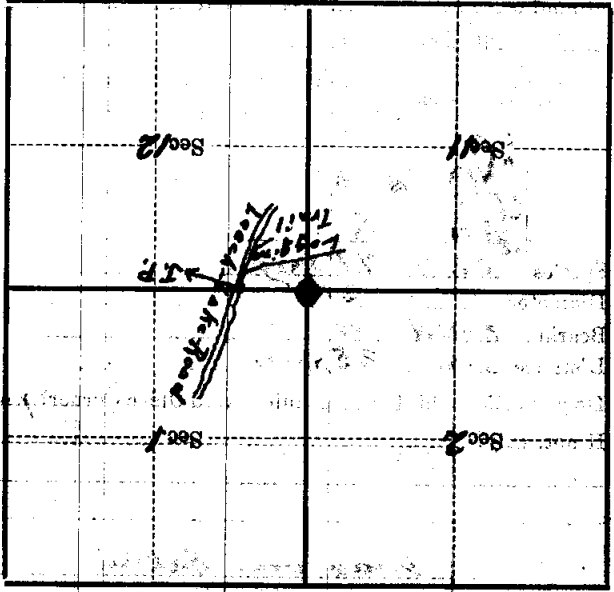
from which this Corner bears West
side of sec. Cox.
tree 6 inches diameter, on the East
Metal Location Poster is on a J. Pine



(Make sketch of topography near Corner)

Corner again.
 Above mentioned T.P. Forest Service
 Poster is on Look Lake Road. T.P. has
 a catface showing West to sec. cor.
 N.P. may can be seen from road in
 winter.

Give any further facts which will aid in finding this
 chains distant.
 from which this Corner bears
 side of sec. cor.
 tree 6 inches diameter, on the
 Metal Location Poster is on a Jack Pine
 East
 West



(Make sketch of topography near Corner)

T. 199 N. R. 29 W. S. 4 E. 21 Mer.

Form 874-B—Revised May, 1918
U. S. Department of Agriculture
FOREST SERVICE

Chippewa NATIONAL FOREST
CORNERS OF THE PUBLIC SURVEY

T. 144N R. 29W 5th Mer.

Section Corner common to Sections
1, 2, 11, and 12

Corner consists of a U.S.G.L.O.S. (not) in place

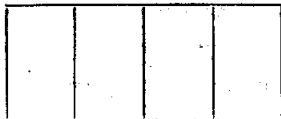
State condition iron pipe

Dimensions above ground 1 1/4 round x 12 inches

Sketch grooves, letters, figures, or notches, on proper face or edge.

CARDINAL POSITION

DIAGONAL POSITION



N W S E



NW SW SE NE

Mound of _____ is located _____

Pits are located _____

Sketch markings of Bearing Trees (or Rocks) in proper box and fill blanks below, giving bearings from Corner to Trees and Distances in Links.



Species Jack P. N.P. snag

Diameter 7" 12"

Bearing _____

Distance _____

Do you believe this to be a genuine Land Office Corner? yes

If not, why? _____

Max von Dahlen

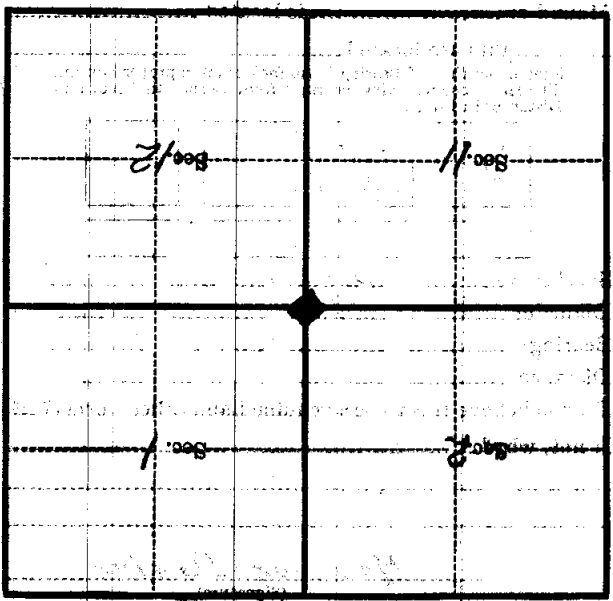
(Signature)

Tech. Foreman

(Title)

(Date)

Metal Location Poster is on a **Dot**
 tree **6** inches diameter, on the **East**
 side of **Section Corner Marker**
 from which this Corner bears
17 chains distant.
 Give any further facts which will aid in finding this
 Corner again:
**Here Dot is located on
 North Lot of Sec. 20. can be
 found 11 chains due West**



(Make sketch of topography near Corner)

U. S. Department of Agriculture
FOREST SERVICE

NATIONAL FOREST

CORNERS OF THE PUBLIC SURVEY

T. 144 R. 29 Mer.

Corner common to Sections

1, 2, 11, and 12

Corner consists of a Pipe & Brass Cap in place

State condition good

Dimensions above ground 6" inches

Sketch grooves, letters, figures, or notches, on proper face or edge.

CARDINAL POSITION

DIAGONAL POSITION

--	--	--	--

--	--	--	--

N W S E

NW SW SE NE

Mound of _____ is located _____

Pits are located _____

Sketch markings of Bearing Trees (or Rocks) in proper box and fill blanks below, giving bearings from Corner to Trees and Distances in Links.

Species _____

Diameter _____

Bearing _____

Distance _____

Do you believe this to be a genuine Land Office Corner? Yes

If not, why? _____

D. H. Christy

(Signature)

D. H. P.

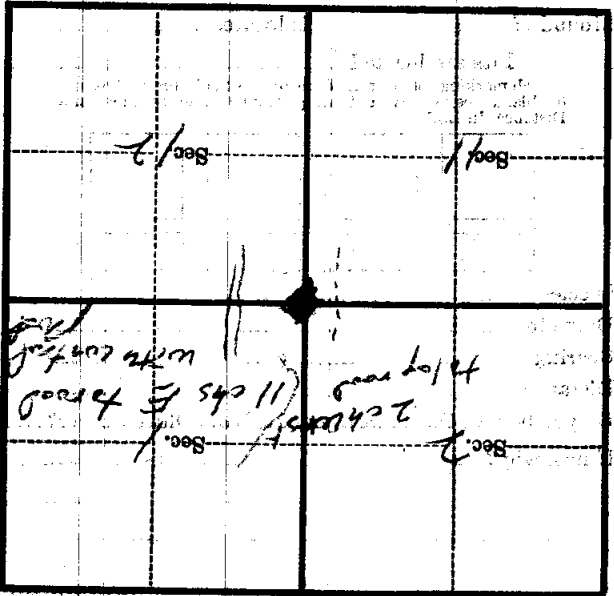
(Title)

10-29-59

(Date)

Corner again.
 About stake may be B.T.
 heavily charred but has
 a face with convex marks.

Give any further facts which will aid in finding this
 from which this Corner bears
 12 feet
 distant.
 side of
 Metal Location Poster is on a
 Post Stake
 tree 1/4 inches diameter, on the east



(Makes sketch of topography near Corner)

U. S. Department of Agriculture

FOREST SERVICE

Chippewa

NATIONAL FOREST

123

CORNERS OF THE PUBLIC SURVEY

T. 144 R. 29 Mer.

Section

Corner common to Sections

1, 2, 11, and 12

Corner consists of a iron pipe (not) in place

State condition good

Dimensions above ground 8" high inches

Sketch grooves, letters, figures, or notches, on proper face or edge.

CARDINAL POSITION

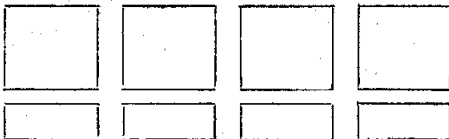
DIAGONAL POSITION



Mound of is located

Pits are located

Sketch markings of Bearing Trees (or Rocks) in proper box and fill blanks below, giving bearings from Corner to Trees and Distances in Links.



Species L. Pine

Diameter 10"

Bearing N. 64° E

Distance 1.56 ch.

Do you believe this to be a genuine Land Office Corner? Yes.

If not, why?

Hanson

(Signature)

12/5/25

(Date)

(Title)

Corner again.

Give any further facts which will aid in finding this

217 INKS ~~corner~~ distant.

from which this Corner bears

N 84° E

side of

N 10° E

tree 16 inches diameter, on the

EAST

Metal Location Poster is on a

SPINE POLE



(Make sketch of topography near Corner)

E-21
Mer.

R 29

T. 144