

U. S. DEPARTMENT OF AGRICULTURE  
FOREST SERVICE

*posted*

Chippewa NATIONAL FOREST

CORNERS OF THE PUBLIC SURVEY

T. 144 R. 29 Mer. 5

11, 12 <sup>14</sup> Corner common to Sections  
and \_\_\_\_\_

Corner consists of a Iron stake (not) in place  
State condition good

Dimensions above ground 9" inches.

Sketch grooves, letters, figures, or notches, on proper face or edge.

CARDINAL POSITION

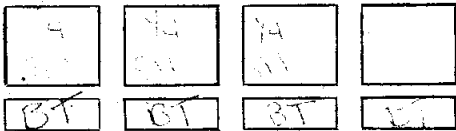
DIAGONAL POSITION



Mound of \_\_\_\_\_ is located \_\_\_\_\_

Pits are located \_\_\_\_\_

Sketch markings of Bearing Trees (or Rocks) in proper box and fill blanks below, giving bearings from Corner to Trees and Distances in Links.



Species	<u>4 Pine</u>	<u>4 Pine</u>	<u>4 Pine</u>	
Diameter	<u>10"</u>	<u>14"</u>	<u>10"</u>	
Bearing	<u>S60°W</u>	<u>S45°E</u>	<u>S45°E</u>	
Distance	<u>30'</u>	<u>12'</u>	<u>30'</u>	

Do you believe this to be a genuine Land Office Corner? Yes

If not, why? \_\_\_\_\_

R Willis

Signature.

Estimator

11/32/20  
Date.

Old logging trail leading NE.  
to Leech Lake Road.

Corner again.

Give any further facts which will aid in finding this

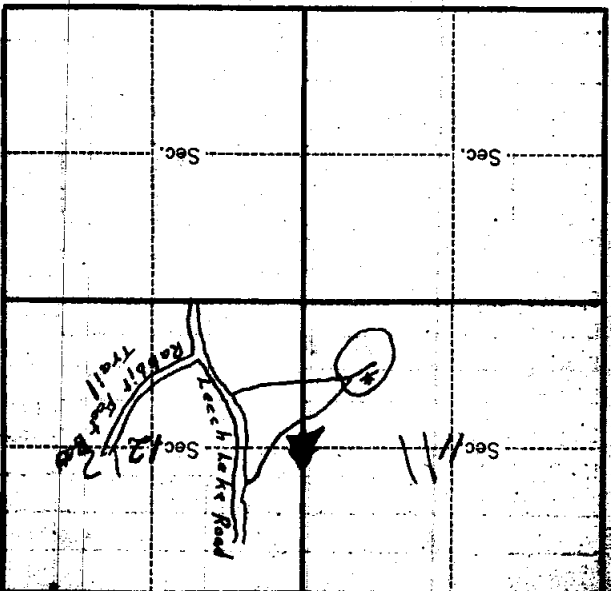
chains distant.

from which this Corner bears

side of

tree inches diameter, on the

Metal Location Poster is on a



(Make sketch of topography near Corner.)

Form 874-B—Revised May, 1918  
U. S. Department of Agriculture  
FOREST SERVICE

*Chippewa* NATIONAL FOREST  
CORNERS OF THE PUBLIC SURVEY

T. 144 N R. 29 W. 5 Mer.

1/4 Sec. Corner common to Sections  
11, and 12

Corner consists of a U.S.G.L.O.S.  
Iron Pipe (not) in place

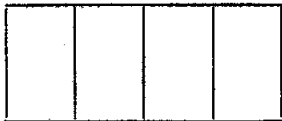
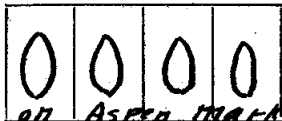
State condition good

Dimensions above ground 12 inches

Sketch grooves, letters, figures, or notches, on proper face or edge.

CARDINAL POSITION

DIAGONAL POSITION



all Aspen marked

as 1/4 S.G.L. links East of SW on pipe good  
Mound of condition, is located 12 inches in

Pits are located diameter

Sketch markings of Bearing Trees (or Rocks) in proper box and fill blanks below, giving bearings from Corner to Trees and Distances in Links.



Species N.P. 3709 N.P. 3709 T.P. 3709

Diameter 12" 12" 12"

Bearing N. NE S-SW SW.

Distance 3 paces 2 paces 6.5 paces

Do you believe this to be a genuine Land Office Corner? yes

If not, why? \_\_\_\_\_

Max von Dahlen

(Signature)

Dec. 9/33

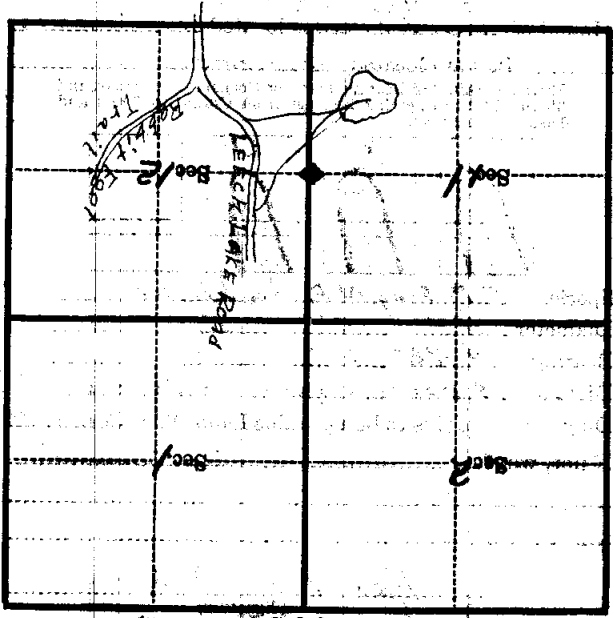
(Date)

Tech. Foreman

(Title)

Old logging trail leading NE to Leech Lake Road  
Corner again.

Give any further facts which will aid in finding this  
chains distant.  
from which this Corner bears  
side of  
tree inches diameter, on the  
Metal Location Poster is on a



(Make sketch of topography near Corner)

Chippewa NATIONAL FOREST

CORNERS OF THE PUBLIC SURVEY

T. 144 N. R. 29 W. 5<sup>th</sup> Mer.  
1/4 Sec. Corner common to Sections

Corner consists of a <sup>U.S.G.L.D.S.</sup> Iron Pipe (not) in place  
State condition good

Dimensions above ground 12 inches.

Sketch grooves, letters, figures, or notches, on proper face or edge.

CARDINAL POSITION

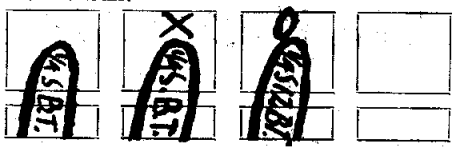
DIAGONAL POSITION



on Aspen marked as N 1/4 S. C. Links East of Iron Pipe, good Mound of condition, is located 12 inches in

Pits are located diameter

Sketch markings of Bearing Trees (or Rocks) in proper box and fill blanks below, giving bearings from Corner to Trees and Distances in Links.



Species N.P. Snag N.P. Snag J.P. Snag  
Diameter 12" 12" 12"  
Bearing N-NE S-SW SW  
Distance 3 paces 2 paces 6.5 paces

Do you believe this to be a genuine Land Office Corner? Yes

If not, why?

Max von Balken

(Signature)

Tech. Foreman

Dec. 9<sup>th</sup> 33

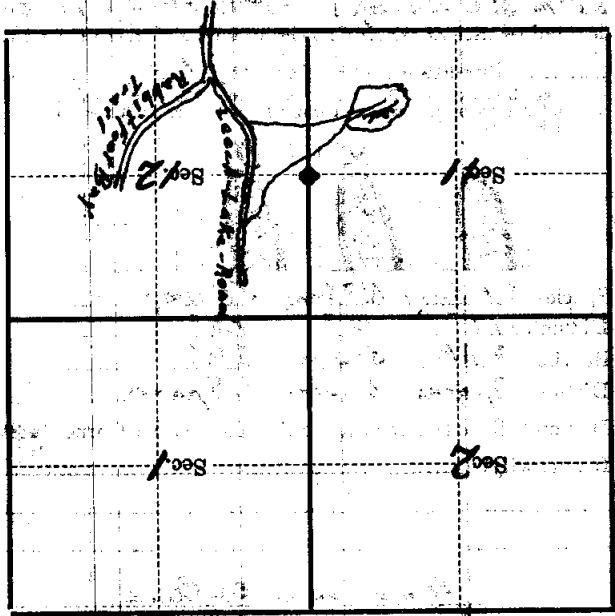
(Date)

(Title)

old logging trail leading NE to Lake Road.

Corner again.

Give any further facts which will aid in finding this  
chains distant.  
from which this Corner bears  
side of  
tree inches diameter, on the  
Metal Location Poster is on a



(Make sketch of topography near Corner)

T. 144 N. R. 22 W. S. 21 Mer. 5-21