

Form 874-9—Revised May, 1918
U. S. Department of Agriculture
FOREST SERVICE

*already
surveyed!*

Chippewa NATIONAL FOREST
CORNERS OF THE PUBLIC SURVEY

T. 144 N. R. 29 W. 5 Mer.

E 11/16 Corner common to Sections
14, and 23

Corner consists of a Stake not found in place
State condition

Dimensions above ground _____ inches
Sketch grooves, letters, figures, or notches, on proper face or edge.

CARDINAL POSITION

DIAGONAL POSITION

--	--	--	--

N W S E

--	--	--	--

NW SW SE NE

Mound of _____ is located _____

Pits are located _____

Sketch markings of Bearing Trees (or Rocks) in proper box and
fill blanks below, giving bearings from Corner to Trees and
Distances in Links.

<u>1/16</u> <u>5</u>

<u>1/16</u> <u>5</u>

--

--

<u>B.T.</u>

<u>B.T.</u>

--

--

Species Cedar Cedar

Diameter 22" 12"

Bearing _____

Distance _____

Do you believe this to be a genuine Land Office Corner? yes

If not, why? _____

E. M. Hardy

(Signature)

C. O. P.

(Title)

(Date)

U. S. DEPARTMENT OF AGRICULTURE

FOREST SERVICE

NATIONAL FOREST

CORNER OF THE PUBLIC LANDS

...

...

...

...

Corner again:

Give any further facts which will aid in finding this

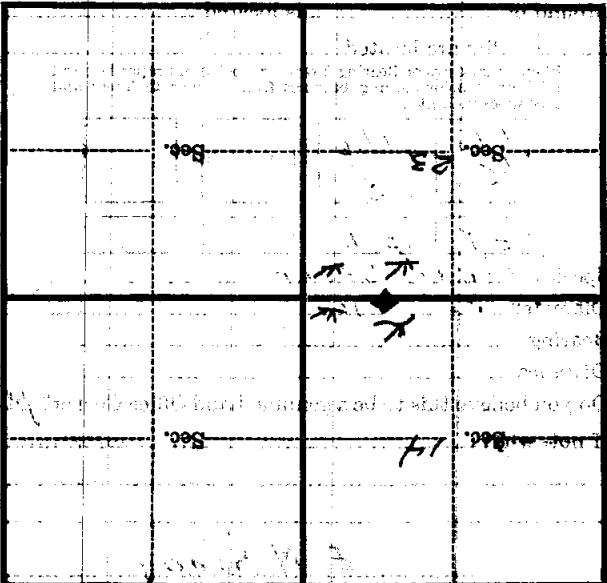
obsains details

from which this Corner bears

side of

tree inches diameter, on the

Metal Location Poster is on a



(Make sketch of topography near Corner)

T. HAN. R. 25 W. S. 14 Mer.

Handy
P.O. 201

Form 874-B—Revised May, 1918
U. S. Department of Agriculture
FOREST SERVICE

Chippewa NATIONAL FOREST
CORNERS OF THE PUBLIC SURVEY

T. 144 N. R. 29 W. 5 Mer.

1/16 Corner common to Sections
14, and 23.

Corner consists of a iron pipe (not) in place
State condition good

Dimensions above ground 1.5" x 12" inches
Sketch grooves, letters, figures, or notches, on proper face or edge.

CARDINAL POSITION

DIAGONAL POSITION

E			
1/16			
14			
23			
N	W	S	E

NW	SW	SE	NE

Mound of _____ is located _____

Pits are located _____

Sketch markings of Bearing Trees (or Rocks) in proper box and fill blanks below, giving bearings from Corner to Trees and Distances in Links.

E 1/16	E 1/16		
S 14	S 23		
BT	BT		

Species cedar cedar

Diameter 8 1/2 9 1/2

Bearing N 15 E S 55 E

Distance 12 lks. 11 lks.

Do you believe this to be a genuine Land Office Corner? Yes

If not, why? At 2 rocks, East 9 67 5 lks

South I found another 1/16 cor

ter the same location. This

last cor. description (over)

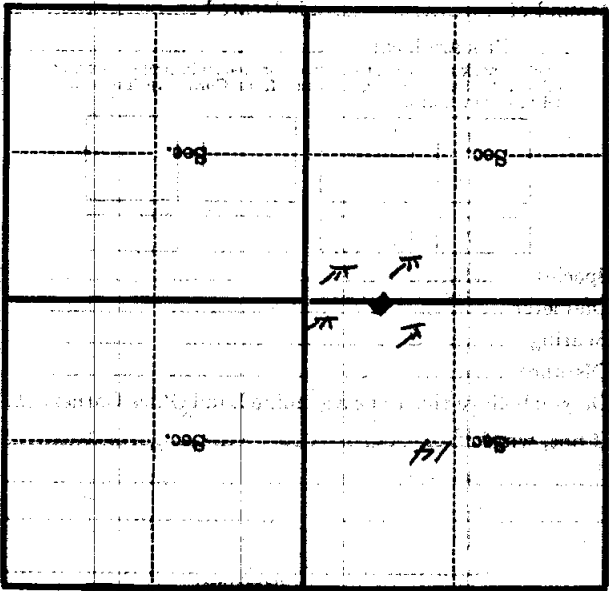
E. M. Handy
(Signature)

(Date)

(Title)

Corner again (continued)
checks with the bearing given on
the Jewett Plats while the present
Cot. will does not. The descrip-
tion of this cor. will be attached
to this description. The bearing
dates on the last mentioned
dating back to 1912 while
the present G.L.O. was est. in
1926 M 27

Metal Location Poster is on a
tree _____ inches diameter, on the
side of _____
from which this Corner bears
_____ chains distant
Give any further facts which will aid in finding this



(Make sketch of topography near Corner)

U. S. DEPARTMENT OF AGRICULTURE
FOREST SERVICE

N-20

posted

Chippewa NATIONAL FOREST

CORNERS OF THE PUBLIC SURVEY

T. 14N R. 79W S. 8 Mer.

E 1/16 Corner common to Sections

14, 23, and _____

Corner consists of a Iron stake - brass cap (not) in place

State condition good

Dimensions above ground _____ inches.

Sketch grooves, letters, figures, or notches, on proper face or edge.

CARDINAL POSITION

DIAGONAL POSITION

14		23	
N	W	S	E

NW	SW	SE	NE

Mound of _____ is located _____

Pits are located _____

Sketch markings of Bearing Trees (or Rocks) in proper box and fill blanks below, giving bearings from Corner to Trees and Distances in Links.

13 ?

E 1/16 579	E 1/16 514		
BT	BT		

Species Cedar Cedar

Diameter 10 7

Bearing S4E N10E

Distance 7 8

Do you believe this to be a genuine Land Office Corner? yes

If not, why? _____

O. R. Bauer

Signature.
Estimator

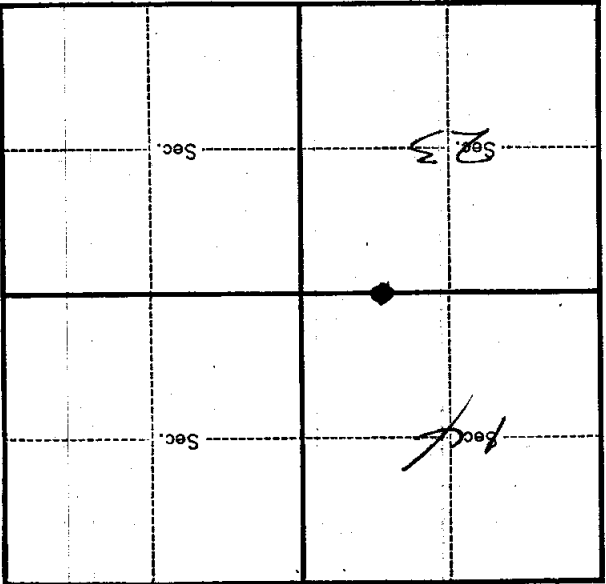
Title.

12/17/20
Date.

N-20

Metal Location Poster is on a _____ inches diameter, on the _____ side of _____ from which this Corner bears _____ chains distant.

Give any further facts which will aid in finding this Corner again.



8-3027 (Make sketch of topography near Corner.)

T. I. G. R. 794
Mer. N-20

U. S. Department of Agriculture
FOREST SERVICE

Chippewa NATIONAL FOREST

123 P

CORNERS OF THE PUBLIC SURVEY

T. 144 N. R. 29 W. 5 th. Mer.

1/16

Corner common to Sections

14, and 23

Corner consists of a ~~stake not found~~ (not) in place

State condition

Dimensions above ground inches

Sketch grooves, letters, figures, or notches, on proper face or edge.

CARDINAL POSITION

DIAGONAL POSITION

--	--	--	--

--	--	--	--

N W S E

NW SW SE NE

Mound of is located

Pits are located

Sketch markings of Bearing Trees (or Rocks) in proper box and fill blanks below, giving bearings from Corner to Trees and Distances in Links.

1/16 S

1/16 S

--

--

BT

BT

--

--

Species Cedar Cedar

Diameter 22" 12"

Bearing

Distance

Do you believe this to be a genuine Land Office Corner? Yes

If not, why?

Carl M. Handy

Chief of party

(Date)

(Title)

