

U. S. DEPARTMENT OF AGRICULTURE
FOREST SERVICE

Posted

~~XXXX~~ NATIONAL FOREST R-11

CORNERS OF THE PUBLIC SURVEY

T. 144 R. 28 S. 5 Mer.

1/4 Corner common to Sections
21, and 28

DESCRIPTION OF CORNER

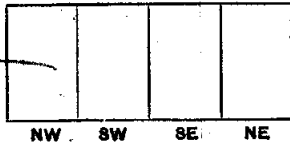
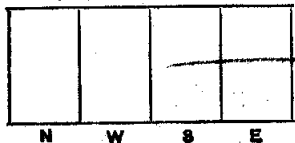
Corner consists of a _____

Dimension above ground _____ inches.

Sketch grooves, letters, figures, or notches, on proper face or edge.

CARDINAL POSITION

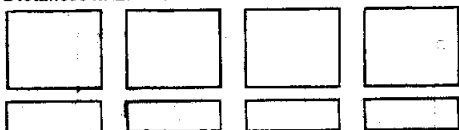
DIAGONAL POSITION



Mound of _____ is located _____

Pits are located _____

Sketch markings of Bearing Trees (or Rocks) in proper box and fill blanks below, giving bearings from Corner to Trees and Distances in Links.



Species Carya dubia 15' high

Diameter 11

Bearing S10E

Distance 5L

Do you believe this to be a genuine Land Office Corner? Yes

If not, why? _____

CB Smith

Signature.

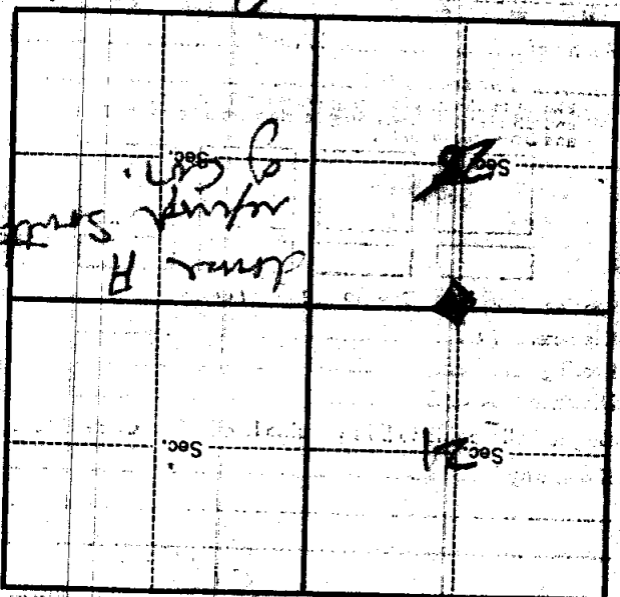
3-19-28

Date.

JF

Title. R-11 8037

Metal Location Poster is on a tree 2 inches diameter, on the side of E 1/4 sec
 from which this corner bears N 75° W 20 P 100 ft
 chains distant.
 Give any further facts which will aid in finding this corner again.
 3 boards back to the
 corner of the
 south corner
 NW 1/4 sec
 on 1/4 sec - 1/4 sec to 1/4 sec



(Make sketch of topography near corner.)

T. 141 N R. 25 W S. Mer.