

U. S. Department of Agriculture
FOREST SERVICE

P-17-26
11-16-26
123

Chippewa NATIONAL FOREST

CORNERS OF THE PUBLIC SURVEY

T. 144 R. 26 5th Mer.

1/4 Corner common to Sections

22, and 23

Corner consists of a Stake (not) in place
State condition

Dimensions above ground 24 inches

Sketch grooves, letters, figures, or notches, on proper face or edge.

CARDINAL POSITION

DIAGONAL POSITION

--	--	--	--

N W S E

--	--	--	--

NW SW SE NE

Mound of is located

Pits are located

Sketch markings of Bearing Trees (or Rocks) in proper box and fill blanks below, giving bearings from Corner to Trees and Distances in Links.

Species

Diameter

Bearing

Distance

Do you believe this to be a genuine Land Office Corner? No

If not, why? Because we could not find B.Ts. Scribing on Stake not legible.

H. E. Johnson

(Signature)

Estimator

(Title)

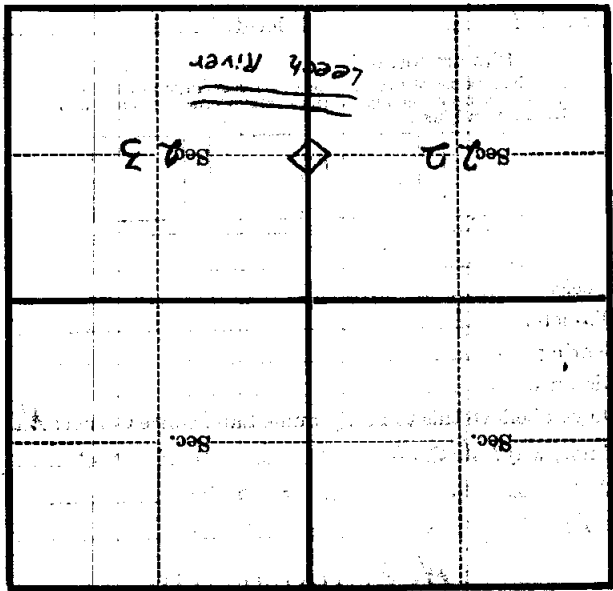
8/12/29
(Date)

P-17

Shack 150 chs. S.E.
from Stake

Corner again.

Give any further facts which will aid in finding this
chains distant.
from which this Corner bears
side of
tree inches diameter, on the
Metal Location Poster is on a



(Make sketch of topography near Corner)

T. 144 R. 26 Mer. 5th

U. S. Department of Agriculture

FOREST SERVICE

P-17

Chippewa NATIONAL FOREST

CORNERS OF THE PUBLIC SURVEY

T. 144 N. R. 26 W. Mer.

Corner common to Sections 22 and 23

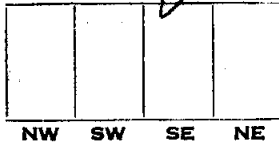
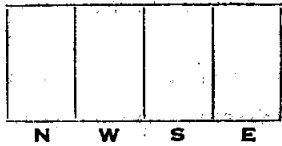
Corner consists of 3 (not) in place State condition ~~new treated post~~

Dimensions above ground _____ inches

Sketch grooves, letters, figures, or notches, on proper face or edge.

CARDINAL POSITION

DIAGONAL POSITION



Mound of _____ is located _____

Pits are located _____

Sketch markings of Bearing Trees (or Rocks) in proper box and fill blanks below, giving bearings from Corner to Trees and Distances in Links.



Species _____

Diameter _____

Bearing _____

Distance _____

Do you believe this to be a genuine Land Office Corner? **No**

If not, why? **This is a F.S. established corner.**

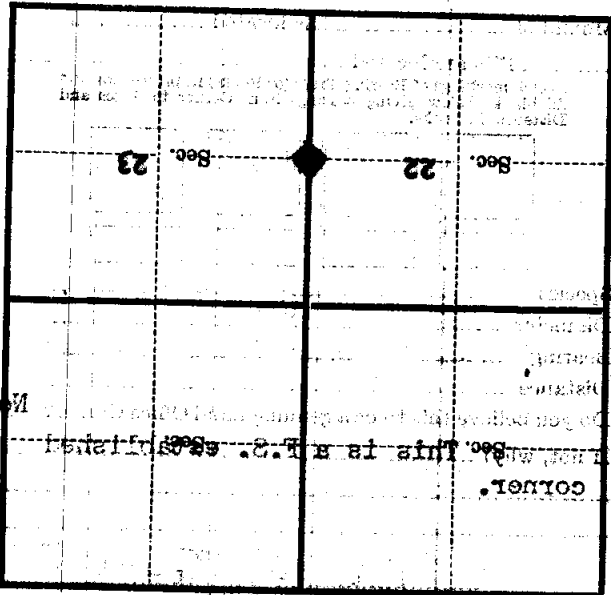
Ray W. Lassett
Sept 1953
(Signature)
(Title)

(Date)

P-17

of the ... occurs to the N. and
 the ... it is out
 of the ... to be at E. edge of
 of photographic enlargement. Search
 picture point as called for in results
 N. 81° 30' W. 3.45 on ... Oak
 1/4 80 22/23" in old field at a point
 Corner again. See ... described
 Give any further facts which will aid in finding this

From which this Corner bears
 side of
 three inches diameter, on the
 Metal Location Poster is on a



(Make sketch of topography near Corner)

U. S. Department of Agriculture

FOREST SERVICE

Bever

P-17

Chippewa

NATIONAL FOREST

CORNERS OF THE PUBLIC SURVEY

T. 144 N. R. 26 W. Mer.

1/4

Corner common to Sections

22

23

Corner consists of a _____ (not) in place

State condition New treated post.

Dimensions above ground _____ inches

Sketch grooves, letters, figures, or notches, on proper face or edge.

CARDINAL POSITION

DIAGONAL POSITION



N W S E

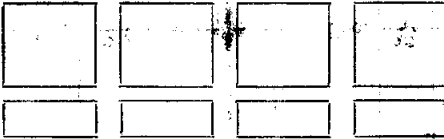


NW SW SE NE

Mound of _____ is located _____

Pits are located _____

Sketch markings of Bearing Trees (or Rocks) in proper box and fill blanks below, giving bearings from Corner to Trees and Distances in Links.



Species _____

Diameter _____

Bearing _____

Distance _____

Do you believe this to be a genuine Land Office Corner? No

If not, why? This is a P.S. established corner.

Jessett

(Signature)

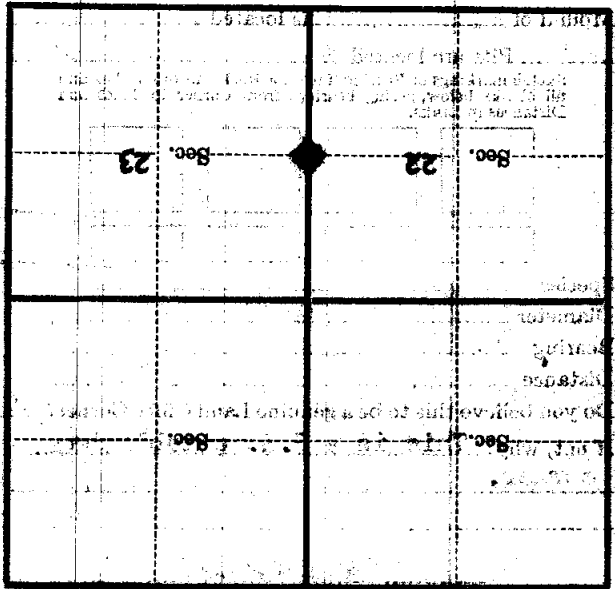
1/13

(Date)

(Title)

of line with the corner to the N. and
 the corner to be at E. edge of
 of photographic reinforcement. Search
 plate point as called for in results
 N. 81° 30' W. 3.45 on Iron Bur Oak
 12/15/60 in old field at a point
 Corner again. See attached post card
 Give any further facts which will aid in finding this
 chains distant

from which this Corner bears
 side of
 tree inches diameter, on the
 Metal Location Poster is on a



(Make sketch of topography near Corner)