

U. S. Department of Agriculture

FOREST SERVICE

122-36
123
17

Chippewa NATIONAL FOREST

CORNERS OF THE PUBLIC SURVEY

T. 144 R. 26 5th Mer.

1/4 Corner common to Sections

34, and 35

Corner consists of a Iron Pipe (set) in place

State condition Good

Dimensions above ground 18 inches

Sketch grooves, letters, figures, or notches, on proper face or edge.

CARDINAL POSITION

DIAGONAL POSITION

N	W	S	E

NW	SW	SE	NE

Mound of is located

Pits are located

Sketch markings of Bearing Trees (or Rocks) in proper box and fill blanks below, giving bearings from Corner to Trees and Distances in Links.

Species

Diameter

Bearing

Distance

Do you believe this to be a genuine Land Office Corner? Yes

If not, why?

Norman F. Shaw

(Signature)

Engineer

(Title)

Mar 6 - 35

(Date)

U. S. DEPARTMENT OF AGRICULTURE

LAND SERVICE

DEPARTMENT NATIONAL FOREST

CORNERS OF THE PUBLIC SURVEY

T. 144 N. R. 26 E. S. 34

CORNER COINCIDES TO SECTION

34 and 35

Corner again (not) in place

Give any further facts which will aid in finding this

2. D. chains distant

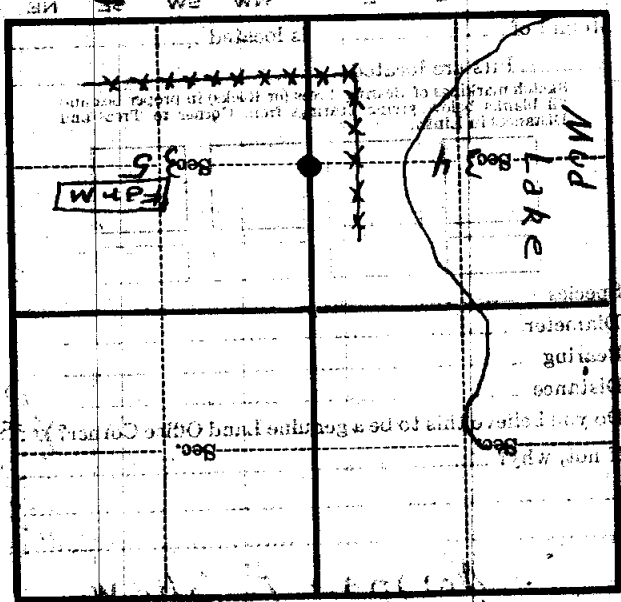
from which this Corner bears

West

side of Post

tree 6 inches diameter, on the West

Metal Location Poster is on a fence Post



(Make sketch of topography near Corner)

T. 144 N. R. 26 E. S. 34 Mer.

U. S. Department of Agriculture
FOREST SERVICE

2-17

Chippewa NATIONAL FOREST

CORNERS OF THE PUBLIC SURVEY

T. 143-144 N. R. 26 W. 5th Mer.

Sec. 34, 35, 36, and 37
Corner (common) to Sections

Corner consists of a Brass cap (not) in place

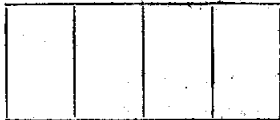
State condition Good

Dimensions above ground _____ inches

Sketch grooves, letters, figures, or notches, on proper face or edge.

CARDINAL POSITION

DIAGONAL POSITION



Mound of _____ is located _____

Pits are located _____

Sketch markings of Bearing Trees (or Rocks) in proper box and fill blanks below, giving bearings from Corner to Trees and Distances in Links.



Species _____

Diameter _____

Bearing _____

Distance _____

Do you believe this to be a genuine Land Office Corner? **Yes**

If not, why? _____

Ray W. Fassett
(Signature)

Sept 1953
(Date)

(Title)

2-17

Outdoors

found original 0.4.0 brass cap on iron pipe which projects 16" above ground. Set 7" treated post 7 feet high beside the brass cap to aid in future recovery. Corner is in west edge of small opening.

Corner again.

Good

Give any further facts which will aid in finding this

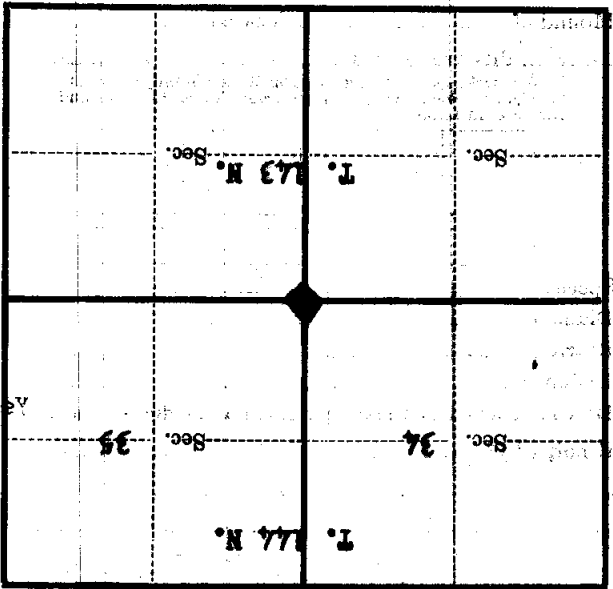
chains distant.

from which this Corner bears

side of

tree inches diameter, on the

Metal Location Poster is on a



(Make sketch of topography near Corner)

U. S. Department of Agriculture
FOREST SERVICE

217

Chippewa NATIONAL FOREST

CORNERS OF THE PUBLIC SURVEY

T. 143-144 N R. 26 W. 5th Mer.
Sec. 34, 35, 3, and 2 Corner common to Sections

Corner consists of a Brass cap (not) in place
State condition Good

Dimensions above ground _____ inches
Sketch grooves, letters, figures, or notches, on proper face or edge.
CARDINAL POSITION DIAGONAL POSITION

N	W	S	E

NW	SW	SE	NE

Mound of _____ is located _____

Pits are located _____

Sketch markings of Bearing Trees (or Rocks) in proper box and fill blanks below, giving bearings from Corner to Trees and Distances in Links.

Species _____
Diameter _____
Bearing _____
Distance _____

Do you believe this to be a genuine Land Office Corner? Yes

If not, why? _____

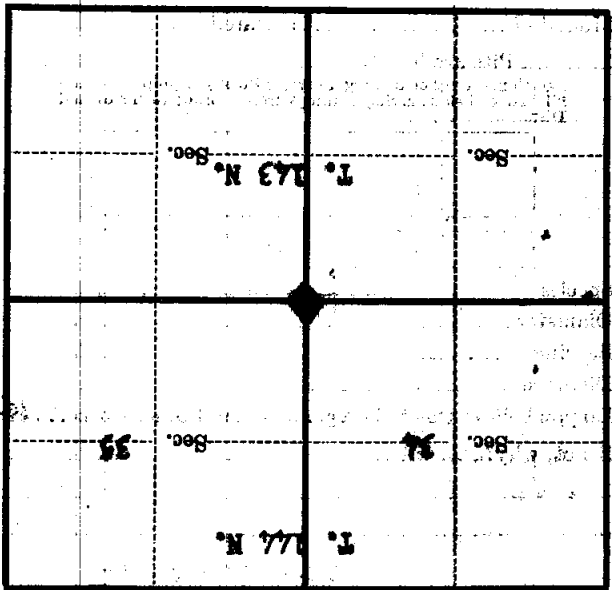
J. J. J.
(Signature)

53
(Date)

(Title)

Corner again.
 Found original G.L.O. brass cap on iron
 pipe which projects 16" above ground.
 Set 7" treated post 7 feet high beside
 the brass cap to aid in future recovery.
 Corner is in west edge of small opening.

Give any further facts which will aid in finding this
 chains distant.
 from which this Corner bears
 side of
 tree inches diameter, on the
 Metal Location Poster is on a



(Make sketch of topography near Corner)