

U. S. Department of Agriculture

FOREST SERVICE

Posted.

Chippewa NATIONAL FOREST *K20*

CORNERS OF THE PUBLIC SURVEY

T. 193N. R. 31W. 5th Mer.

One Sixteenth Corner common to Sections

NE 1/16 and of Sec. 14

Corner consists of a Brass Caped Pipe (not) in place

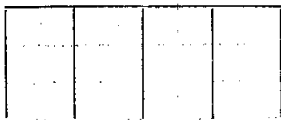
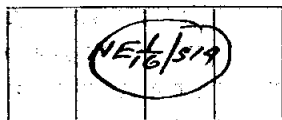
State condition Good

Dimensions above ground 8 inches

Sketch grooves, letters, figures, or notches, on proper face or edge.

CARDINAL POSITION

DIAGONAL POSITION



N W S E

NW SW SE NE

Mound of _____ is located _____

Pits are located _____

Sketch markings of Bearing Trees (or Rocks) in proper box and fill blanks below, giving bearings from Corner to Trees and Distances in Links.



Species J. Pine St. R. Oak

Diameter 7" 5"

Bearing S 24° 30' W S. 41 1/2° W.

L16 Distance 46 34 1/2

Do you believe this to be a genuine Land Office Corner? Yes.

If not, why? _____

J. A. Gjelhaug

(Signature)

Tech. Engineer

(Title)

11/19/39

(Date)

Corner again.

Give any further facts which will aid in finding this

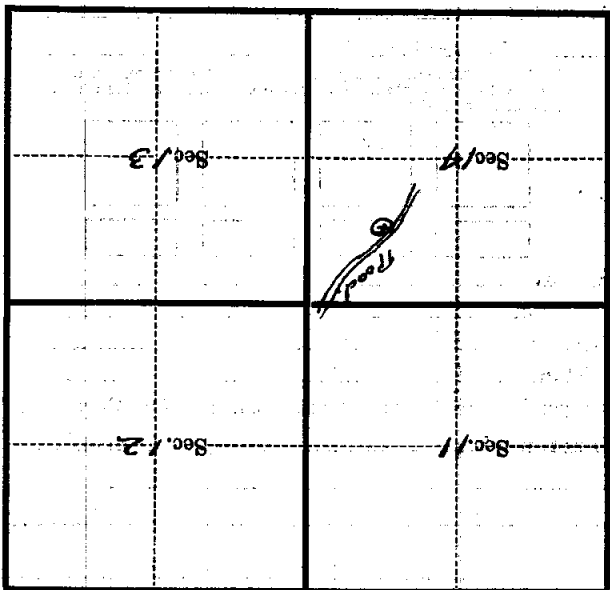
002 chains distant.

from which this Corner bears North.

side of *Finner Post*

tree ~~inches diameter, on the North~~

Metal Location Poster is on a *Finner Post*



(Make sketch of topography near Corner)

K-20

T. L. A. N. R. 31 m 573 Mer.