

U. S. Department of Agriculture
FOREST SERVICE

P19

Posted

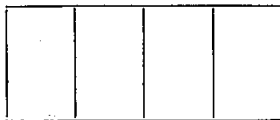
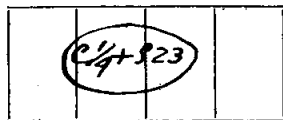
NATIONAL FOREST

CORNERS OF THE PUBLIC SURVEYT. 143N. R. 31W. 511 Mer.C 1/4 Corner common to Sections23Corner consists of a Brass Caped Pipe (not) in placeState condition GoodDimensions above ground 7 inches

Sketch grooves, letters, figures, or notches, on proper face or edge.

CARDINAL POSITION

DIAGONAL POSITION



Mound of _____ is located _____

Pits are located _____

Sketch markings of Bearing Trees (or Rocks) in proper box and fill blanks below, giving bearings from Corner to Trees and Distances in Links.

Species N. Pine N. Pine _____Diameter 18" 16" _____Bearing N. 79° W. N. 87 1/2° E. _____LKS Distance 36 109 1/2 _____Do you believe this to be a genuine Land Office Corner? Yes

If not, why? _____

11/20/39

(Date)

J. A. Gjelhaug

(Signature)

Tech. Eng.

(Title)

Corner again.

Give any further facts which will aid in finding this

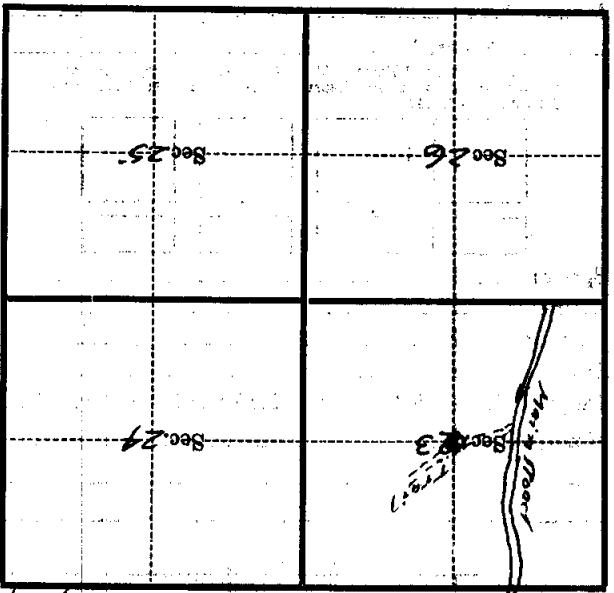
chains distant.

from which this Corner bears

side of *North*

tree *5'* inches diameter, on the *North*

Metal Location Poster is on a *Aspen*



(Make sketch of topography near Corner)

P-19
Mer.

519

T. 143 N. R. 31 W.