

Form 874-9—Revised May, 1918
U. S. Department of Agriculture
FOREST SERVICE

R-18-19

P.

Chippewa NATIONAL FOREST

CORNERS OF THE PUBLIC SURVEY

T. 143 N R. 29 W 5 Mer.

Meander Corner common to Sections
23, , , and 26

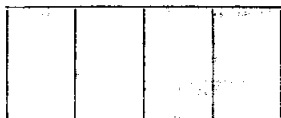
Corner consists of a Iron pipe (not) in place
State condition Good

Dimensions above ground 14 inches

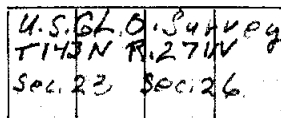
Sketch grooves, letters, figures, or notches, on proper face or edge.

CARDINAL POSITION

DIAGONAL POSITION



N W S E



NW SW SE NE

Mound of _____ is located _____

Pits are located _____

Sketch markings of Bearing Trees (or Rocks) in proper box and fill blanks below, giving bearings from Corner to Trees and Distances in Links.

No	B. T. 3		

Species _____

Diameter _____

Bearing _____

Distance _____

Do you believe this to be a genuine Land Office Corner? _____

If not, why? _____

Maurice Schaller

(Signature)

Estimator

(Title)

3/29/35

(Date)

R-18-19

Sugar point Roads Form inverted
The chain End of corner

Corner again.

Give any further facts which will aid in finding this

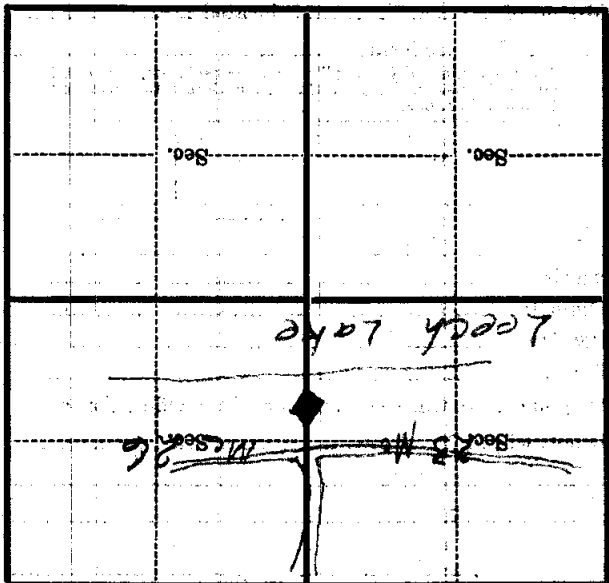
58 1/2 inch chains distant.

from which this Corner bears N 83° E

side of Tree

tree 20 inches diameter, on the East

Metal Location. Poster is on a Elm



(Make sketch of topography near Corner)

T. 143N R. 29W
St. Rose Mer.

Form 874-B—Revised May, 1915
 U. S. Department of Agriculture
 FOREST SERVICE

11

Chippewa NATIONAL FOREST

CORNERS OF THE PUBLIC SURVEY

T. 143 N R. 29 W 5 Mer.

Meander Corner common to Sections
23 Vic., and _____

Corner consists of a Iron pipe (~~rod~~) in place
 State condition Good

Dimensions above ground 14 inches
 Sketch grooves, letters, figures, or notches, on proper face or edge.

CARDINAL POSITION

DIAGONAL POSITION

N	W	S	E

U.S. G. L. O. Survey			
T. 143 N	R. 29 W	Sec. 23	Vic.
142	9 W		
NW	SW	SE	NE

Mound of _____ is located _____

Pits are located _____

Sketch markings of Bearing Trees (or Rocks) in proper box and fill blanks below, giving bearings from Corner to Trees and Distances in Links.

No	B. T. 3		

Species _____

Diameter _____

Bearing _____

Distance _____

Do you believe this to be a genuine Land Office Corner? Yes

If not, why? _____

Maurice Schaller

3/29/35

Estimator

(Date)

(Title)

Section 36

Corner of the section

On Leech Lake shore
5 chains N of road

Corner again.

Give any further facts which will aid in finding this

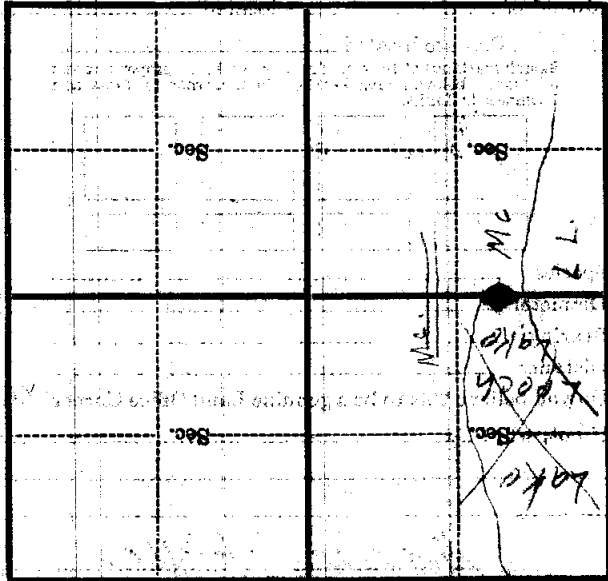
137 links chains distant.

From which this Corner bears
S 65 W

side of Tree

tree 16 inches diameter, on the
5 M

Metal Location Poster is on a
Maple



(Make sketch of topography near Corner)

T 143 N R 29 W 5 Mer.

U. S. Department of Agriculture

FOREST SERVICE

5

Chippewa

NATIONAL FOREST

CORNERS OF THE PUBLIC SURVEY

T. 143N R. 29W 5 Mer.

MC Corner common to Sections

23, 26, and

Corner consists of a Good Iron Rod (not) in place

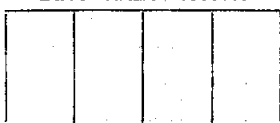
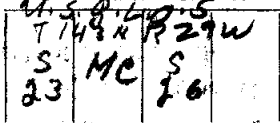
State condition Good

Dimensions above ground 4 inches

Sketch grooves, letters, figures, or notches, on proper face or edge.

CARDINAL POSITION

DIAGONAL POSITION



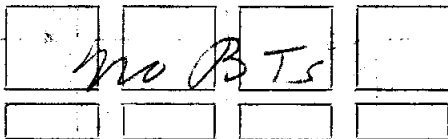
N W S E

NW SW SE NE

Mound of is located

Pits are located

Sketch markings of Bearing Trees (or Rocks) in proper box and fill blanks below, giving bearings from Corner to Trees and Distances in Links.



Species

Diameter

Bearing

Distance

Do you believe this to be a genuine Land Office Corner? Yes

If not, why?

4/19/35 (Date)

Peter Perrella (Signature) Estimator (Title)

W. H. W.
D. Section
of
shown at
the marked Me

Center again.

Give any further facts which will aid in finding this

0.07 chains distant.

from which this Corner bears

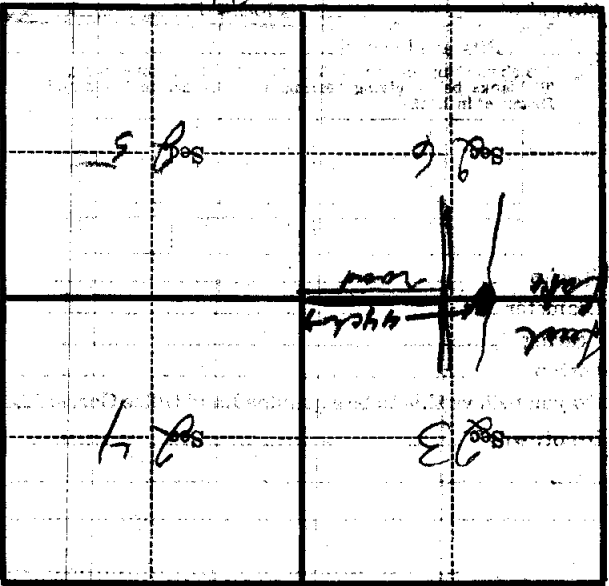
N 90.0 E

side of

tree 14 inches diameter, on the

Metal Location Poster is on a

03



(Make sketch of topography near Corner)