

U. S. DEPARTMENT OF AGRICULTURE
FOREST SERVICE

B-1

posted

Chippewa NATIONAL FOREST

CORNERS OF THE PUBLIC SURVEY

T. 148 R. 29 5th Mer.
1/16 30 Corner common to Sections
1, 6, and _____

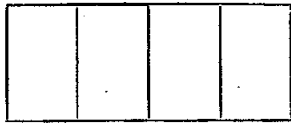
Corner consists of a Iron stake (~~stone~~) in place
State condition Good

Dimensions above ground 8" inches.

Sketch grooves, letters, figures, or notches, on proper face or edge.

CARDINAL POSITION

DIAGONAL POSITION



Mound of _____ is located _____

Pits are located _____

Sketch markings of Bearing Trees (or Rocks) in proper box and fill blanks below, giving bearings from Corner to Trees and Distances in Links.

N 1/16 SG	N 1/16 S 1		
BT	BT		

Species	<u>Cedar</u>	<u>Cedar</u>		
Diameter	<u>8"</u>	<u>7"</u>		
Bearing	<u>S 17° E</u>	<u>N 40° W</u>		
Distance	<u>15'</u>	<u>15'</u>		

Do you believe this to be a genuine Land Office Corner? Yes

If not, why? _____

R Willis

Signature.

Estimator

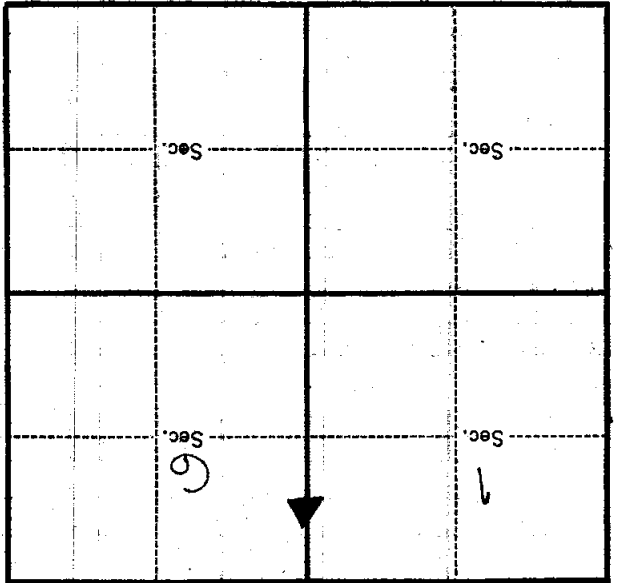
Title.

Dec 8 1930

Date.

B-1

Metal Location Poster is on a _____ inches diameter, on the _____ side of _____ from which this Corner bears _____ chains distant.
 Give any further facts which will aid in finding this Corner again.



(Make sketch of topography near Corner.)

T. 14 N. R. 24 W. 3-1 Mer.