

U. S. Department of Agriculture

FOREST SERVICE

W-1

W-1

CHIPPEWA NATIONAL FOREST

CORNERS OF THE PUBLIC SURVEY

T. 143 N R. 27 W 5 Mer.

Meander Corner common to Sections

36, (31), and

Corner consists of a iron post (not) in place

State condition good

Dimensions above ground 10" inches

Sketch grooves, letters, figures, or notches, on proper face or edge.

CARDINAL POSITION

DIAGONAL POSITION

General Land Office Survey							
M.C.		S31					
2736		R27W					
R 28	W T	143 N					
N	W	S	E	NW	SW	SE	NE

Mound of is located

Pits are located

Sketch markings of Bearing Trees (or Rocks) in proper box and fill blanks below, giving bearings from Corner to Trees and Distances in Links.


Species

Diameter

Bearing

Distance

Do you believe this to be a genuine Land Office Corner? Yes

If not, why?

R.M. Pierrelie

(Signature)

3/25/35

(Date)

Estimator

(Title)

W-1

(approx)

East of Boy River Bridge,  
15 chains and South of River 3 Chs.

Corner again.

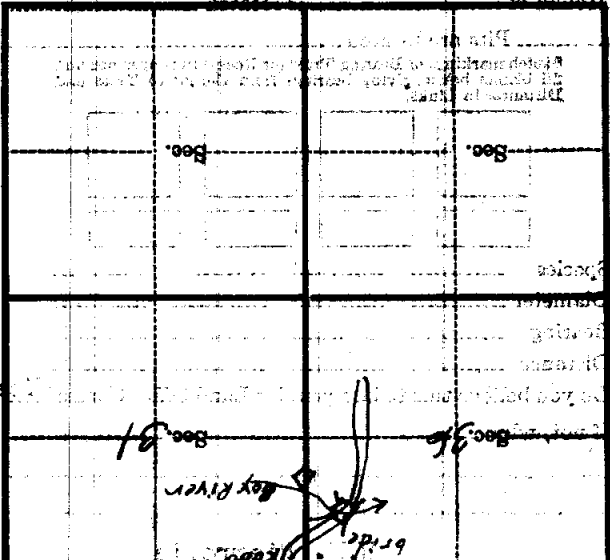
Give any further facts which will aid in finding the  
chains distant.

from which this Corner bears adjacent to corner

side of stake

3 inches diameter on the North

Metal Location Post is on a Cedar Post



U. S. Department of Agriculture

FOREST SERVICE

Posted

WX-1

Chippewa NATIONAL FOREST

CORNERS OF THE PUBLIC SURVEY

T. 143N R. 27W28 6P Mer.

Monroe Corner common to Sections

36, 31, and

Corner consists of a Iron Post (not) in place

State condition Good

Dimensions above ground 10 inches

Sketch grooves, letters, figures, or notches, on proper face or edge.

CARDINAL POSITION

DIAGONAL POSITION

General description							
N	W	S	E	NW	SW	SE	NE

Handwritten in NW: MB, 20035, R28W, T143N  
Handwritten in SE: Sec 31, R 27W

Mound of is located

Pits are located

Sketch markings of Bearing Trees (or Rocks) in proper box and fill blanks below, giving bearings from Corner to Trees and Distances in Links.


Species

Diameter

Bearing

Distance

Do you believe this to be a genuine Land Office Corner? Yes

If not, why?

3/25/35 (Date)

R M Wheeler (Signature)

Estimator (Title)

*3 also (approx)*  
*and 5 (approx)*  
*Bridge*  
*and Bay Area*

Corner Again

Give any further facts which will aid in finding this

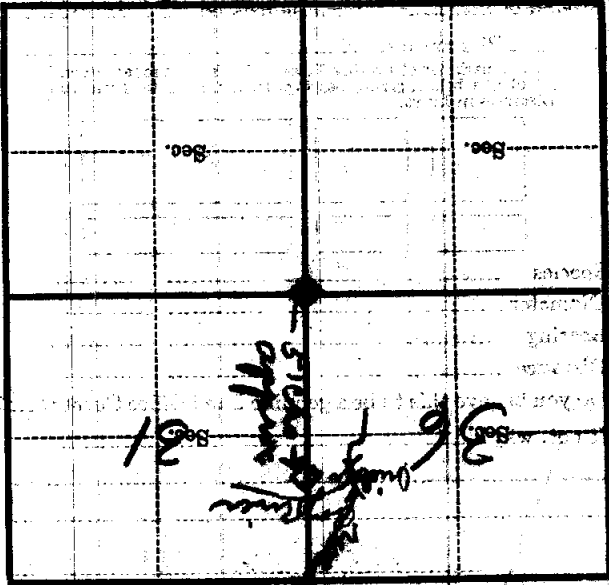
~~corner~~

~~from which the corner bears~~

side of *these*

3 inches diameter, on the

Metal Location Poster is on a *corner post*



(Make sketch of topography near corner)

Form 571-9 - Revised May, 1931  
U. S. Department of Agriculture  
FOREST SERVICE

W, X-1

Chippewa NATIONAL FOREST

CORNERS OF THE PUBLIC SURVEY

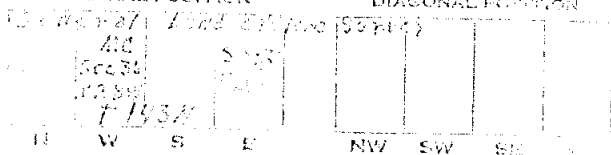
T. 143 N. R. 27-28 W. 5 Mer.

Meander Corner common to Sections  
30, 31, and

Corner consists of a Iron Post (not) in place  
State condition Good

Distances above ground 10'' incl.

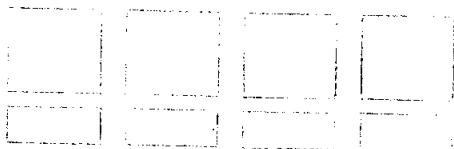
Search marks, letters, figures, or notches, on proper face of...



Bound of ... is located

Pits are located

Search marks of Bearing Trees (or Rocks) in proper box and  
fill blanks below giving bearings from Corner to Trees and  
Distances in feet.



Species

Diameter

Bearing

Distance

Do you believe this to be a genuine Land Office Corner?

If not, why?

R. M. Pierrelie

3/20/35

3/20/35

(APPROX)

South of River 3 chs.

Bridge, 15 chs. and

East of Boy River

Corner again.

Give any further facts which will aid in finding this

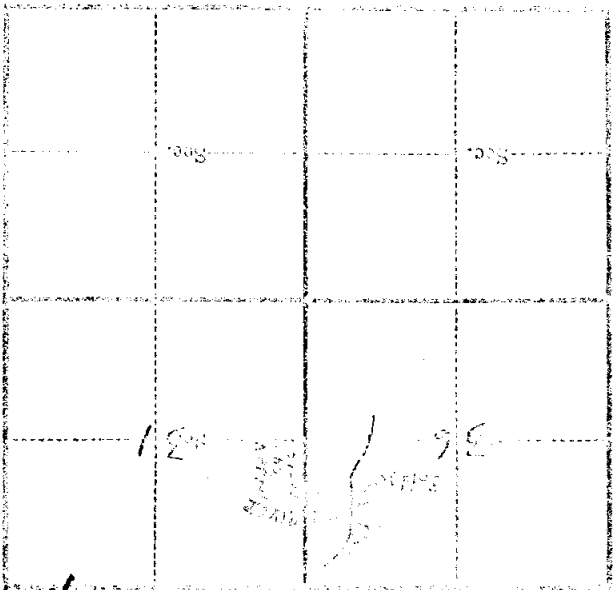
CORNER chain distant.

from which the corner bears ALLEGANI TO

side of STATE

two 200 paces diameter on the N

ALL INFORMATION REFERRED TO AS CREDIT POST



W-X-1

ALLEGANI