

Form 874-9—Revised May, 1918
U. S. Department of Agriculture
FOREST SERVICE

J-15

CHIPPENAW NATIONAL FOREST

CORNERS OF THE PUBLIC SURVEY

T. 143 R. 26 5th. Mer.

$\frac{1}{4}$ Corner common to Sections 10, and 15

Corner consists of a Oak Stake in place
State condition good

Dimensions above ground 12" inches
Sketch grooves, letters, figures, or notches, on proper face or edge.

CARDINAL POSITION

DIAGONAL POSITION

--	--	--	--

--	--	--	--

N W S E

NW SW SE NE

Mound of _____ is located _____

Pits are located _____

Sketch markings of Bearing Trees (or Rocks) in proper box and fill blanks below, giving bearings from Corner to Trees and Distances in Links.

Species _____

Diameter _____

Bearing _____

Distance _____

Do you believe this to be a genuine Land Office Corner? ~~Yes~~ **No**

If not, why? *G. Cor*

Norman F. Shaw

(Signature)

Engineer

March 6, 1935

(Date)

(Title)

Corner again.

Give any further facts which will aid in finding this

chain distant.

from which this Corner bears

side of Road

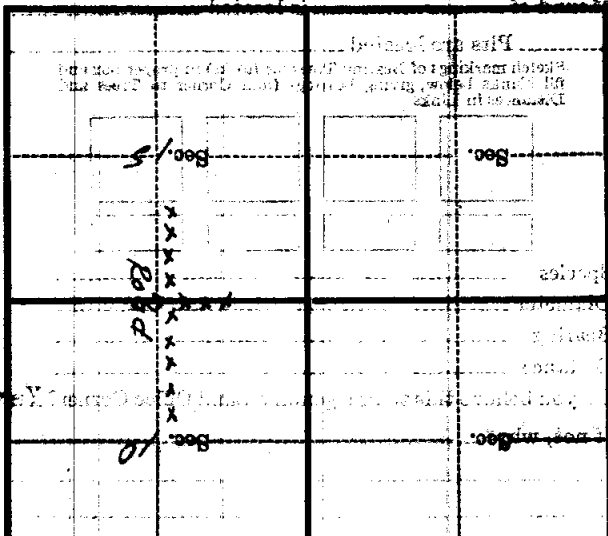
tree 6 inches diameter, on the

Metal Location Post is on a

East

West

Fence post



Form 874-S—Revised May, 1918
U. S. Department of Agriculture
FOREST SERVICE

P.
3-15

NATIONAL FOREST

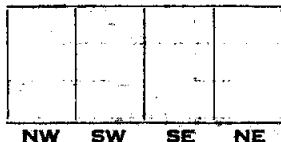
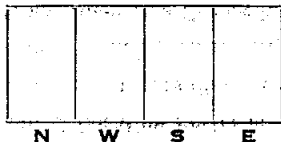
CORNERS OF THE PUBLIC SURVEY

T. 143 R. 26 5th Mer.

1/4 Corner common to Sections
10, 4, 15, and

Corner consists of a oak stk. (not) in place
State condition good

Dimensions above ground two feet inches
Sketch grooves, letters, figures, or notches, on proper face or edge.



Mound of _____ is located _____

Pits are located _____

Sketch markings of Bearing Trees (or Rocks) in proper box and fill blanks below, giving bearings from Corner to Trees and Distances in Links.



Species _____

Diameter _____

Bearing _____

Distance _____

Do you believe this to be a genuine Land Office Corner? yes

If not, why? _____

Norman P. Shaw

(Signature)

Mar. 6, 35

(Date)

Engineer

(Title)

Corner again.

Give any further facts which will aid in finding this

35 chains distant.

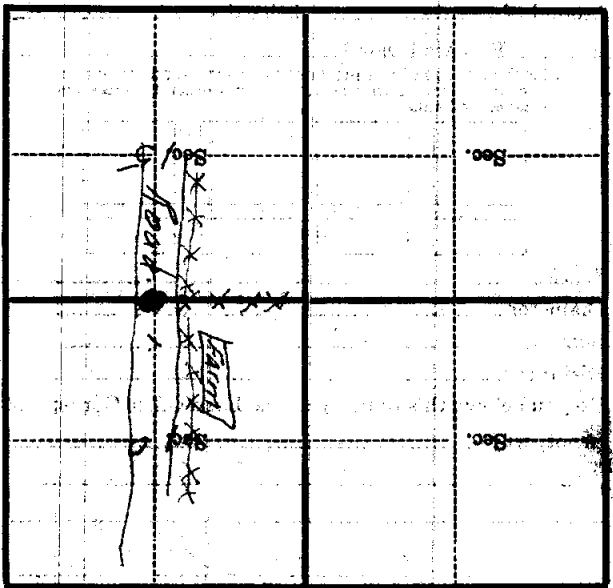
from which this Corner bears

East.

side of Road.

tree 6 inches diameter, on the west.

Metal Location Poster is on a Fence post.



(Make sketch of topography near Corner)