

U. S. Department of Agriculture

FOREST SERVICE

Z-21

CHIPPEWA

NATIONAL FOREST

CORNERS OF THE PUBLIC SURVEY

T. 142/143 R. 25 S Mer.

Section

Corner common to Sections

35, 36, 1, and 2

Corner consists of a Stake (1/2") in place

State condition loose--fair

Dimensions above ground 30" inches

Sketch grooves, letters, figures, or notches, on proper face or edge.

CARDINAL POSITION

DIAGONAL POSITION

--	--	--	--

S	S	S	S
35	2	1	36

N W S E

NW SW SE NE

Mound of _____ is located _____

Pits are located _____

Sketch markings of Bearing Trees (or Rocks) in proper box and fill blanks below, giving bearings from Corner to Trees and Distances in Links.

S
1

--

--

--

B.T.

--

--

--

Species Maple

Diameter 10"

Bearing S 87 E

Distance 24

Do you believe this to be a genuine Land Office Corner? Yes

If not, why? _____

Raymond T. DeFaut

Raymond T. DeFaut

(Signature)

Jr. Civil Engineer

2-12-40

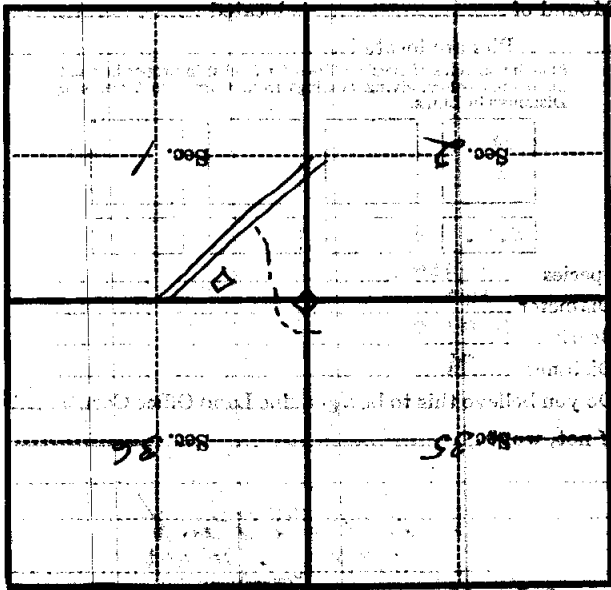
(Date)

(Title)

Corner is 20 feet North of approximate
 corner again.

Give any further facts which will aid in finding this
 corner.

Metal Location Poster is on a
 tree 5 inches diameter, on the
 side of ~~tree~~
 from which this Corner bears
 at corner



(State sketch of topography near Corner)



U. S. Department of Agriculture
FOREST SERVICE



Z-24

..... NATIONAL FOREST

CORNERS OF THE PUBLIC SURVEY

T. 143 R. 25 S. 5 Mer.

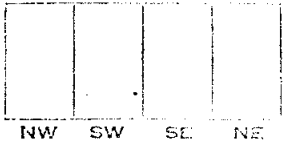
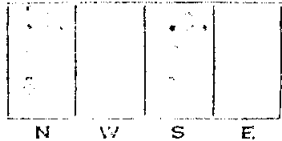
..... Corner common to Sections
36, and 37

Corner consists of a stone (set) in place
State condition

Dimensions above ground inches
Sketch grooves, letters, figures, or notches, on proper face or edge.

CARDINAL POSITION

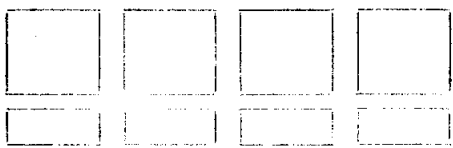
DIAGONAL POSITION



Mound of is located

..... Pits are located

Sketch markings of Bearing Trees (or Rocks) in proper box and fill blanks below, giving Bearings from Corner to Trees and Distances in Links.



Species

Diameter

Bearing

Distance

Do you believe this to be a genuine Land Office Corner?

If not, why?

.....

.....

.....

.....

(Signature)

(Date)

(Title)



Corner again.

Give any further facts which will aid in finding this

chains distant.

from which this Corner bears

side of

tree inches diameter, on the

Midal Location Poster is on a

	Sec. /		Sec.
Take willow			
	Sec. 8/4		Sec.