

U. S. Department of Agriculture  
FOREST SERVICE

*Chippewa* NATIONAL FOREST

CORNERS OF THE PUBLIC SURVEY

T. *142N* R. *31W* *5th* Mer.  
*Section* Corner common to Sections

*21*, *22*, *23*, and *27*

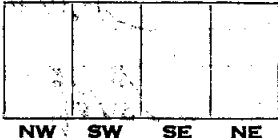
Corner consists of a *Breco pipe* (not) in place  
+ *Cap. iron pipe (Co. Resurvey)*  
State condition *good*

Dimensions above ground *2 x 12* inches

Sketch grooves, letters, figures, or notches, on proper face or edge.

CARDINAL POSITION

DIAGONAL POSITION



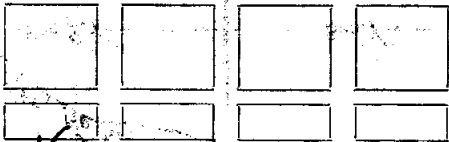
N W S E

NW SW SE NE

Mound of \_\_\_\_\_ is located \_\_\_\_\_

Pits are located \_\_\_\_\_

Sketch markings of Bearing Trees (or Rocks) in proper box and fill blanks below, giving bearings from Corner to Trees and Distances in Links.



Species *None*

Diameter \_\_\_\_\_

Bearing \_\_\_\_\_

Distance \_\_\_\_\_

Do you believe this to be a genuine Land Office Corner? *Yes*

If not, why? \_\_\_\_\_

*Dorman J. Sutton*

(Signature)

*Engineer*

(Title)

*3-18-36*  
(Date)

Corner again.

Give any further facts which will aid in finding this

chain's distant.

30

from which this corner bears

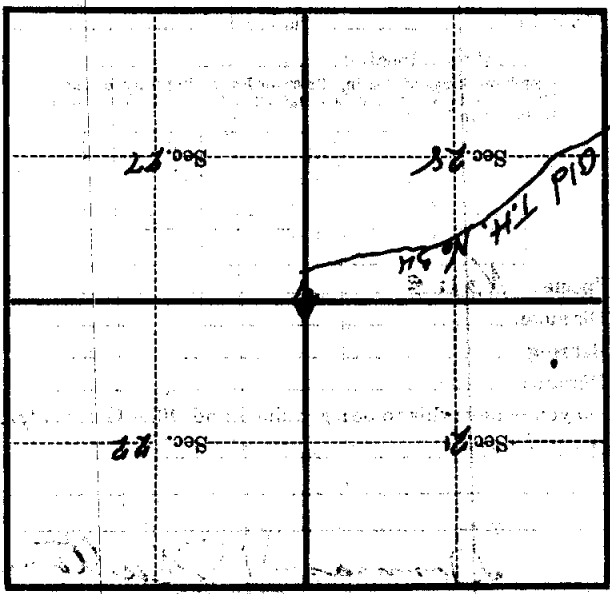
N 10° W

side of tree

tree 8 inches diameter, on the

Aspen NW

Metal Location Poster is on a



(Make sketch of topography near corner)

T 142 N R 51 W Mer. R-13 5-14