

Form 874-B—Revised May, 1918
 U. S. Department of Agriculture
 FOREST SERVICE

PO-8

Chippewa

NATIONAL FOREST

CORNERS OF THE PUBLIC SURVEY

T. *142 N*, R. *30 W* *5th* Mer.

1/64 Corner common to Sections
20, located *9.69 ch.* *S* of *CE 1/16*, and

Corner consists of a *1/2" P.W. cap* (not) in place

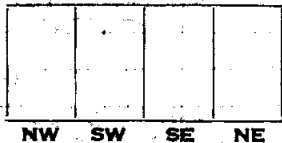
State condition *Good*

Dimensions above ground *4* inches

Sketch grooves, letters, figures, or notches, on proper face or edge.

CARDINAL POSITION

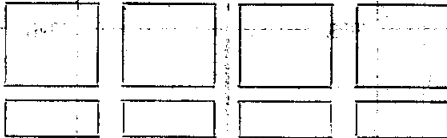
DIAGONAL POSITION



Mound of _____ is located _____

Pits are located _____

Sketch markings of Bearing Trees (or Rocks) in proper box and fill blanks below, giving bearings from Corner to Trees and Distances in Links.



Species _____

Diameter _____

Bearing _____

Distance _____

Do you believe this to be a genuine Land Office Corner? *yes*

If not, why? _____

R. Moore

(Signature)

Asst Ldu - F H B

(Title)

2/1/27
 (Date)

U. S. Department of Agriculture

FOREST SERVICE

NATIONAL FOREST

CORNER OF THE TOWN OF ...

Corner again.

Give any further facts which will aid in finding this

chain distant.

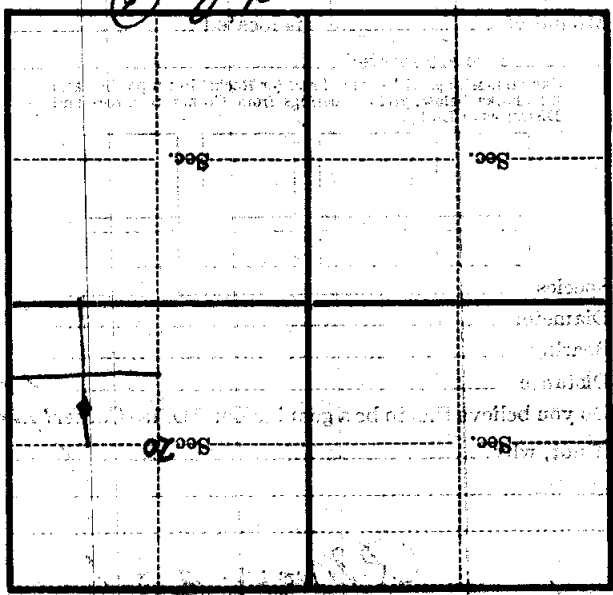
0-09

from which this Corner bears *N56E*

side of

tree *12* inches diameter, on the

Metal Location Poster is on a *White Pine*



(Make sketch of topography near Corner)

T. W. R. B. 30 W. 5th

PO-8