

U. S. Department of Agriculture
FOREST SERVICE

Posted W-18

Chippewa NATIONAL FOREST

CORNERS OF THE PUBLIC SURVEY

T. *142 N.* R. *28 W.* *5th* Mer.

1/4 Corner common to Sections *34* and *35*

Corner consists of a *Br. Cap 1" pipe* (~~rod~~) in place
State condition *good*

Dimensions above ground *6* inches

Sketch grooves, letters, figures, or notches, on proper face or edge.

CARDINAL POSITION

DIAGONAL POSITION

--	--	--	--

N W S E

--	--	--	--

NW SW SE NE

Mound of _____ is located _____

Pits are located _____

Sketch markings of Bearing Trees (or Rocks) in proper box and fill blanks below, giving bearings from Corner to Trees and Distances in Links.

<i>NW 1/4</i>			
<i>S 35</i>			
<i>B.T.</i>			

Species *Aspen*

Diameter *7.2"*

Bearing *S 25° W*

Distance *48.3*

Do you believe this to be a genuine Land Office Corner? *yes*

If not, why? _____

Daniel Rose

(Signature)

Estimator

(Title)

Mar. 22, 35
(Date)

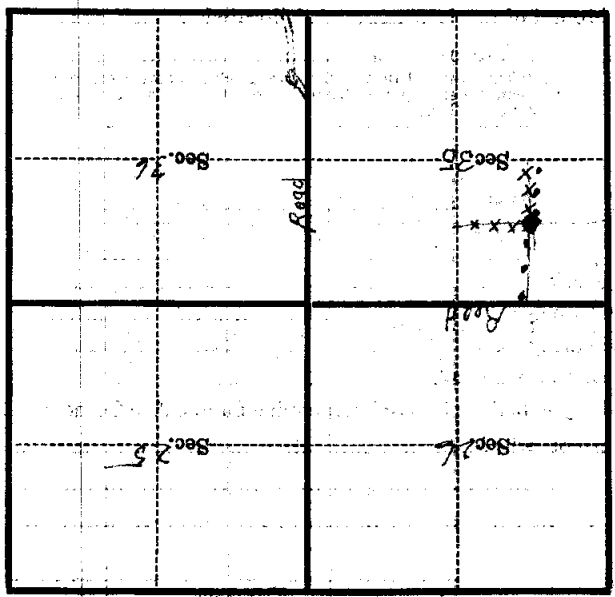
No Var. Used

PUBLIC SERVICE

1928
S33
N.M.

Corner again.

Give any further facts which will aid in finding this
chains distant.
from which this Corner bears
side of
tree inches diameter, on the
Metal Location Poster is on a *None Used*



(Make sketch of topography near Corner)

T. 142 R. 28 W-18 Mer.