

U. S. Department of Agriculture

FOREST SERVICE

Posted

V-13

NATIONAL FOREST

CORNERS OF THE PUBLIC SURVEY

T. *142* R. *28* *5* Mer.

~~29~~ *Section* Corner common to Sections

27, 28, 33, and *34*

Corner consists of a *G.L.O. Brass cap* (not) in place

State condition *Good*

Dimensions above ground *10"* inches

Sketch grooves, letters, figures, or notches, on proper face or edge.

CARDINAL POSITION

DIAGONAL POSITION

<i>Sec</i>	<i>Sec</i>	<i>Sec</i>	<i>Sec</i>
<i>28</i>	<i>33</i>	<i>34</i>	<i>27</i>

N W S E

NW SW SE NE

Mound of _____ is located _____

Pits are located _____

Sketch markings of Bearing Trees (or Rocks) in proper box and fill blanks below, giving bearings from Corner to Trees and Distances in Links.

	<i>None</i>		

Species _____

Diameter _____

Bearing _____

Distance _____

Do you believe this to be a genuine Land Office Corner? *Yes*

If not, why? _____

P. L. M. Eachus

Estimator

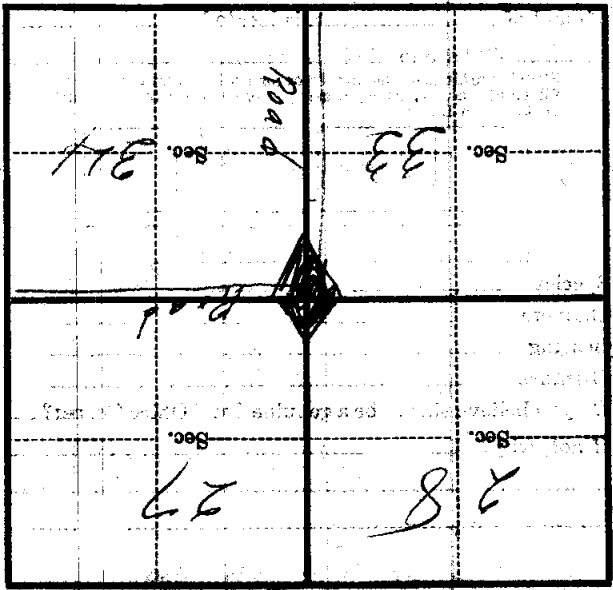
3/25/35
(Date)

11 2 1/2 inches diameter

SECTIONAL CORNER POSTER

Metal Location Poster is on a $2\frac{1}{2}$ inch diameter, on the side of $11\frac{1}{2}$ Sec. 33. From which this Corner bears 5.55.F. Give any further facts which will aid in finding this Corner again.

7 1/2 line and road to corner



(Make sketch of topography near Corner)