

U. S. Department of Agriculture

FOREST SERVICE

N-18,19

CHIPPEWA

NATIONAL FOREST

CORNERS OF THE PUBLIC SURVEY

T. 142 R. 26 5 Mer.

M. C. Corner common to Sections

14, and 23

Corner consists of a wood stake ~~100~~ in place

State condition fair

Dimensions above ground 20" inches

Sketch grooves, letters, figures, or notches, on proper face or edge.

CARDINAL POSITION

DIAGONAL POSITION

--	--	--	--

N W S E

		M. C.	M. C.
--	--	----------	----------

NW SW SE NE

Mound of is located

Pits are located

Sketch markings of Bearing Trees (or Rocks) in proper box and fill blanks below, giving bearings from Corner to Trees and Distances in Links.

Species Spruce Spruce

Diameter 4" 6"

Bearing N. 25 E. S. 69 E.

Distance 9 Links 5 Links

Do you believe this to be a genuine Land Office Corner? Yes

If not, why?

R. T. DeFant

R. T. DeFant

(Signature)

12-17-39

(Date)

Jr. Civil Eng.

(Title)

See Nelson on Graves Lake

Corner again.

Give any further facts which will aid in finding this

chain distant.

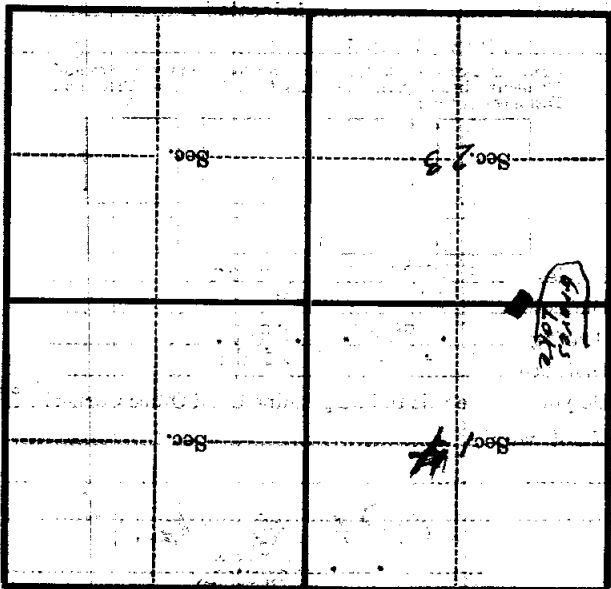
from which this Corner bears

N 8° E

side of line

tree 8 inches diameter, on the North

Metal Location Poster is on a Aspen



(Make sketch of topography near Corner)

U. S. Department of Agriculture

FOREST SERVICE

N-18, 19

CHIPPEWA

NATIONAL FOREST

CORNERS OF THE PUBLIC SURVEY

T. 142 R. 26 S. Mer. N. C.

Corner common to Sections

14 and 23

Corner consists of a wood stake in place

State condition

fair

Dimensions above ground 20 inches

Sketch grooves, letters, figures, or notches, on proper face or edge.

CARDINAL POSITION

DIAGONAL POSITION

N W S E

		N. C.	N. C.

NW SW SE NE

Mound of is located

Pits are located

Sketch markings of Bearing Trees (or Rocks) in proper box and fill blanks below, giving bearings from Corner to Trees and Distances in Links.

Species Spruce Spruce

Diameter 4 5

Bearing N. 25 E. S. 60 E.

Distance 9 Links 8 Links

Do you believe this to be a genuine Land Office Corner? Yes

If not, why?

R. T. DeFaut

12-17-20

J. T. CIVIL Eng.

(Date)

(Title)

Metal Location Poster is on a ⁸ inches diameter, on the side of from which this Corner bears chains distant. Give any further facts which will aid in finding the Corner again.

<p>Sec. 23</p>	<p>Sec. 23</p>	<p>Sec. 23</p>
<p>Sec. 14</p>	<p>Sec. 14</p>	<p>Sec. 14</p> <p>Shore Look</p>

(Make sketch of topography near Corner)