

U. S. Department of Agriculture
FOREST SERVICE

Arizona

NATIONAL FOREST

CORNERS OF THE PUBLIC SURVEY

T. 14S R. 26 S Mer.

Section Corner

Corner common to Sections

27 28 29 and 30

Corner consists of a iron rod (not) in place

State condition good

Dimensions above ground 10" below ground inches

Sketch grooves, letters, figures, or notches, on proper face or edge.

CARDINAL POSITION

DIAGONAL POSITION

--	--	--	--

--	--	--	--

N W S E

NW SW SE NE

Mound of _____ is located _____

Pits are located _____

Sketch markings of Bearing Trees (or Rocks) in proper box and fill blanks below, giving bearings from Corner to Trees and Distances in Links.

Species _____

Diameter _____

Bearing _____

Distance _____

Do you believe this to be a genuine Land Office Corner? Yes

If not, why? County Corner

R. T. DeFaut
R. T. DeFaut

10/22/00

(Date)

Forest Engineer

(Title)

POINT BEARING TO CORNER

Give any other facts which will aid in finding this

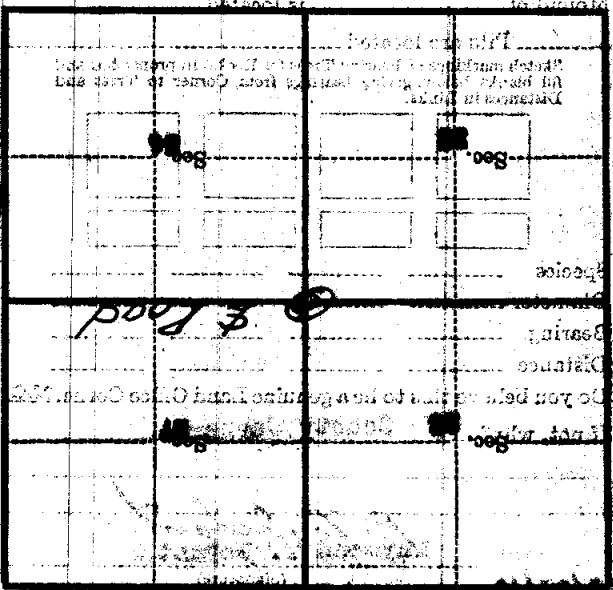
corner again.

From which this corner bears

side of

tree inches diameter, on the

Metal Location Posters is on a



Form 874-B—Revised May, 1918
U. S. Department of Agriculture
FOREST SERVICE

*Patrol
12/11/40*

Chippewa NATIONAL FOREST

CORNERS OF THE PUBLIC SURVEY

T. 142 R. 26 5 Mer.

Section Corner Corner common to Sections
27, 28, 33, and 34

Corner consists of a iron rod (not) in place
State condition good

Dimensions above ground 10" below ground _____ inches

Sketch grooves, letters, figures, or notches, on proper face or edge.

CARDINAL POSITION

DIAGONAL POSITION

N W S E

NW SW SE NE

Mound of _____ is located _____

Pits are located _____

Sketch markings of Bearing Trees (or Rocks) in proper box and fill blanks below, giving bearings from Corner to Trees and Distances in Links.

Species _____

Diameter _____

Bearing _____

Distance _____

Do you believe this to be a genuine Land Office Corner? NO

If not, why? County Corner

R. T. Defant
Raymond T. Defant
(Signature)

10/23/40
(Date)

Jr. Civil Engineer
(Title)

Section Center
 33 32 31 30
 Parts buried in road
 Corner again
 Give any further facts which will aid in finding the
 chain distant
 from which this Corner bears
 side of tree
 tree 4 inches diameter, on the South
 Metal Location Posters on a

