

S.O

N-9

U. S. Department of Agriculture

FOREST SERVICE

P.

Chip Purdon NATIONAL FOREST

CORNERS OF THE PUBLIC SURVEY

T. 147 R. 26 Mer.

Section Corner common to Sections 17, 16, 20, and 21

Corner consists of a Tam post in place

State condition Checked - Solid

Dimensions above ground (3" x 3") 24" above inches

Sketch grooves, letters, figures, or notches, on proper face or edge.

CARDINAL POSITION

DIAGONAL POSITION

--	--	--	--

R26 S17	S20	T142 S21	S16
------------	-----	-------------	-----

N W S E

NW SW SE NE

Mound of is located

Pits are located

Sketch markings of Bearing Trees (or Rocks) in proper box and fill blanks below, giving bearings from Corner to Trees and Distances in Links.

Species

Diameter

Bearing

Distance

Do you believe this to be a genuine Land Office Corner? Yes

If not, why?

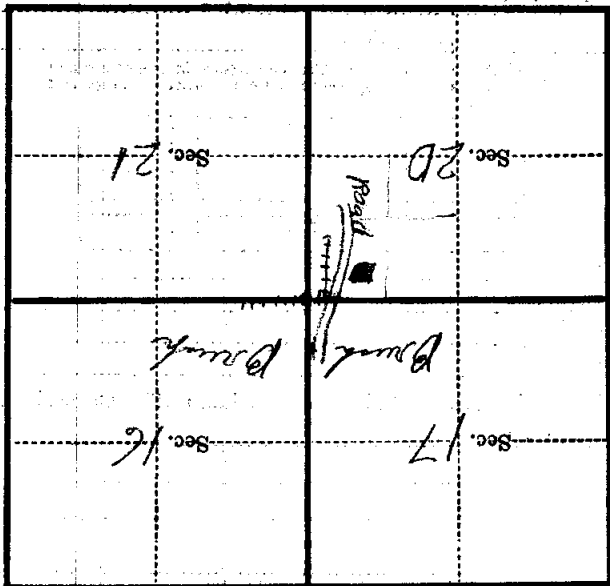
O. G. Leonard

2-26-35

(Date)

Eng. (Title)

(Make sketch of topography near Corner)



Metal Location Poster is on a

tree inches diameter, on the

side of

from which this Corner bears

chains distant.

Give any further facts which will aid in finding this

Corner again.

Fence Corner 408ch W of Post

Post on East-West fence line

Road 408ch W of Post

U. S. Department of Agriculture

FOREST SERVICE

N-9

CHIPPEWA

NATIONAL FOREST

CORNERS OF THE PUBLIC SURVEY

T. 142 R. 26 5th. Mer.

Section Corner common to Sections

17, 16, 20, and 21

Corner consists of a Tam. post in place

State condition checked - solid

Dimensions above ground (3"x3") 24" above inches

Sketch grooves, letters, figures, or notches, on proper face or edge.

CARDINAL POSITION

DIAGONAL POSITION

--	--	--	--

R26		T142	
S 17	S20	S21	S16

N W S E

NW SW SE NE

Mound of _____ is located _____

Pits are located _____

Sketch markings of Bearing Trees (or Rocks) in proper box and fill blanks below, giving bearings from Corner to Trees and Distances in Links.

Species _____

Diameter _____

Bearing _____

Distance _____

Do you believe this to be a genuine Land Office Corner? **No.**

If not, why? **Co.**

O.G. QUANRUD

(Signature)

Engineer

2/26/35

(Date)

(Title)

Band 4.08 chains west of post.

Post on E. W. fence line

Corner again. Fence corner 4.08 chains west post

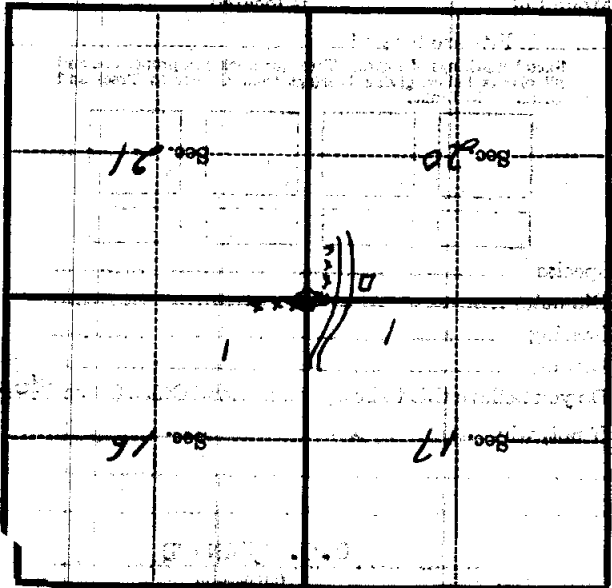
Chas any further facts which will aid in finding this chains distant.

From which this Corner bears

side of

tree inches diameter, on the

Metal Location Post is on a



(Make sketch of topography near Corner)