

R-9

U. S. Department of Agriculture

FOREST SERVICE

Chipp. Purchase NATIONAL FOREST

CORNERS OF THE PUBLIC SURVEY

T. 142 R. 26 Mer.

Section Corner common to Sections

20, 21, 29, and 28

Corner consists of a Square Oak Post (not) in place

State condition Solid—Very Weathered

Dimensions above ground 4"x4" 30" above inches

Sketch grooves, letters, figures, or notches, on proper face or edge.

CARDINAL POSITION

DIAGONAL POSITION

S 21	S 20	S 29	S 28
N	W	S	E

NW	SW	SE	NE

Mound of \_\_\_\_\_ is located \_\_\_\_\_

Pits are located \_\_\_\_\_

Sketch markings of Bearing Trees (or Rocks) in proper box and fill blanks below, giving bearings from Corner to Trees and Distances in Links.


Species \_\_\_\_\_

Diameter \_\_\_\_\_

Bearing \_\_\_\_\_

Distance \_\_\_\_\_

Do you believe this to be a genuine Land Office Corner? *yes*

If not, why? \_\_\_\_\_

*O. G. R.*

(Signature)

*Feb. 26, 35*

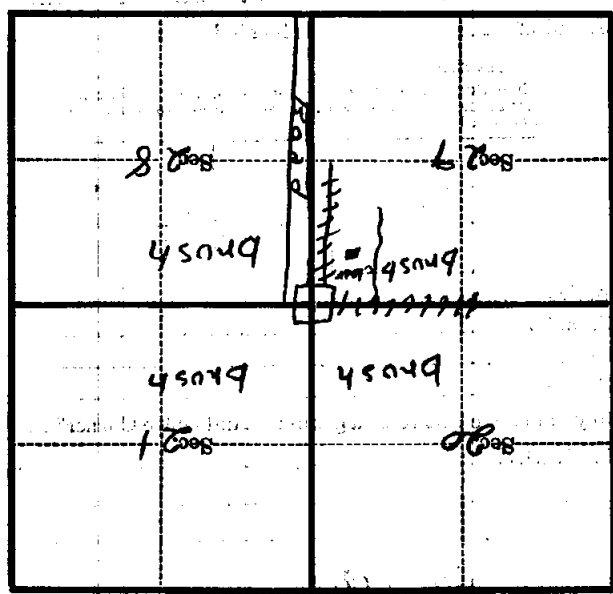
(Date)

*Engineer*

(Title)

Corner again.  
 Large Rock (2' high x 2' wide x 3' long)  
 8" south of Post.  
 Fence corner 4' West of Post.  
 4 wire telephone line directly  
 over head

Metal Location Poster is on a  
 tree inches diameter, on the  
 side of  
 from which this Corner bears  
 chains distant.  
 Give any further facts which will aid in finding this



(Make sketch of topography near Corner)

U. S. Department of Agriculture  
FOREST SERVICE

R-9

Chippewa Purchase NATIONAL FOREST

CORNERS OF THE PUBLIC SURVEY

T. 142 R. 26 Mer.

Section Corner common to Sections  
20, 21, 29, and 28

Corner consists of a Square Oak Post (not) in place  
State condition Solid - Very Weathered

Dimensions above ground 4" x 4" 30" above inches

Sketch grooves, letters, figures, or notches, on proper face or edge.  
CARDINAL POSITION DIAGONAL POSITION

S 20	S 20	S 20	S 20
N	W	S	E

NW	SW	SE	NE

Mound of \_\_\_\_\_ is located \_\_\_\_\_

Pits are located \_\_\_\_\_

Sketch markings of Bearing Trees (or Rocks) in proper box and fill blanks below, giving bearings from Corner to Trees and Distances in Links.


Species \_\_\_\_\_

Diameter \_\_\_\_\_

Bearing \_\_\_\_\_

Distance \_\_\_\_\_

Do you believe this to be a genuine Land Office Corner? *Yes*

If not, why? \_\_\_\_\_

*O. J. Guarnieri*  
(Signature)

*Feb. 26, 1935*  
(Date)

*Eng.*  
(Title)

Answer like phone calls  
directly over the road

Henry Colner A West of Post

Large Rock (2' High X 2' Wide X 3' Long)  
8" south of Post

Corner again.

Give any further facts which will aid in finding this

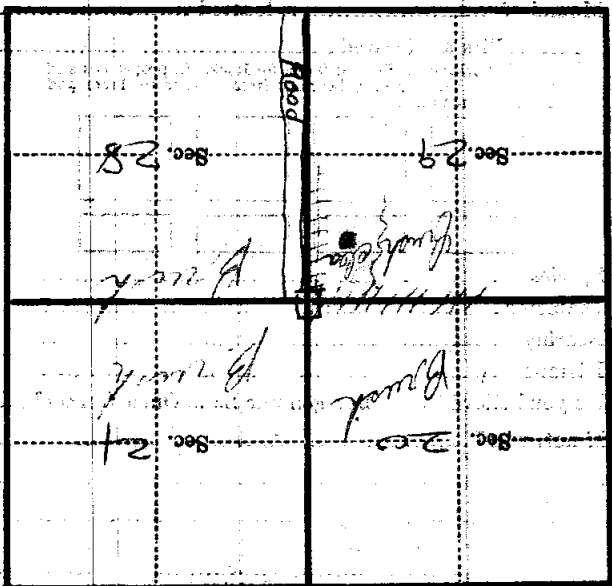
chains distant.

from which this Corner bears

side of

tree inches diameter, on the

Metal Location Poster is on a



(Make sketch of topography near Corner)