

U. S. Department of Agriculture  
FOREST SERVICE

A-23,24  
*[Handwritten signature]*

CHIPPewa NATIONAL FOREST

CORNERS OF THE PUBLIC SURVEY

T. 142 R. 25 5 Mer.  
N. C.

Corner common to Sections  
36, and 1

Corner consists of a Scribed Cedar Post in place

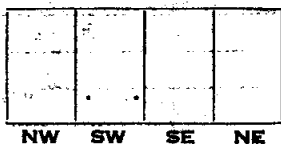
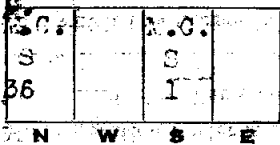
State condition good

Dimensions above ground 2" X 4" X 24" inches

Sketch grooves, letters, figures, or notches, on proper face or edge.

CARDINAL POSITION

DIAGONAL POSITION



Mound of \_\_\_\_\_ is located \_\_\_\_\_

Pits are located \_\_\_\_\_

Sketch markings of Bearing Trees (or Rocks) in proper box and fill blanks below, giving bearings from Corner to Trees and Distances in Links.



Species \_\_\_\_\_

Diameter *1.5* \_\_\_\_\_

Bearing \_\_\_\_\_

Distance \_\_\_\_\_

Do you believe this to be a genuine Land Office Corner? *Yes*

If not, why? \_\_\_\_\_

Thomas L. Williams

(Signature)

12-13-38

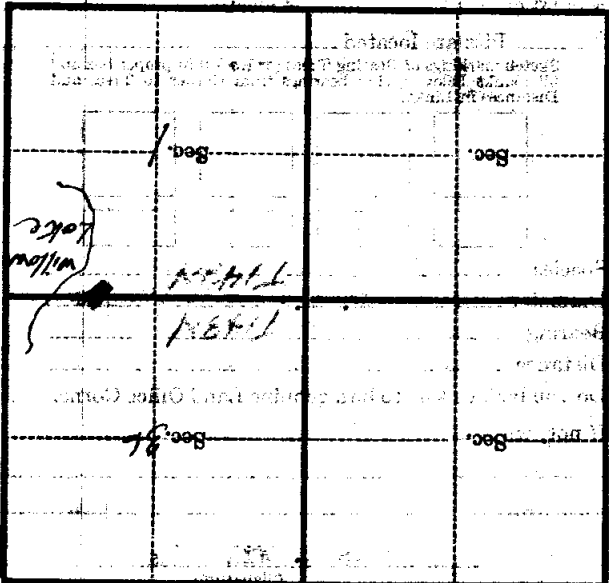
(Date)

M. A. Williams

(Title)

Corner again.

Give any further facts which will aid in finding this  
shadows distant  
from which this Corner bears  
side of  
tree inches diameter, on the  
Metal Location Poster is on a



(Make sketch of topography near corner)