

Form 874-D—Revised May, 1913  
U. S. Department of Agriculture  
FOREST SERVICE

J17

CHIPPEWA NATIONAL FOREST

CORNERS OF THE PUBLIC SURVEY

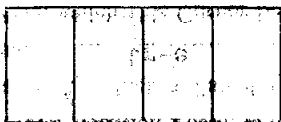
T. 142 R. 25 Mer.  
Sec. Corner common to Sections  
10, 11, 14, and 15

Corner consists of a (not) in place  
State condition

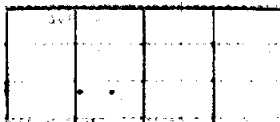
Dimensions above ground Inches  
Sketch grooves, letters, figures, or notches, on proper face or edge.

CARDINAL POSITION

DIAGONAL POSITION



N W S E



NW SW SE NE

Mound of is located

Pits are located

Sketch markings of Bearing Trees (or Rocks) in proper box and fill blanks below, giving bearings from Corner to Trees and Distances in Links.

Sec  
11



B T



Species cedar

Diameter stub

Bearing N 52 E

Distance 4

Do you believe this to be a genuine Land Office Corner? Yes

If not, why?

R. Defant

(Signature)

J. E.

(Title)

7-1-40

(Date)

Corner again.

Give any further facts which will aid in finding this

chains distant.

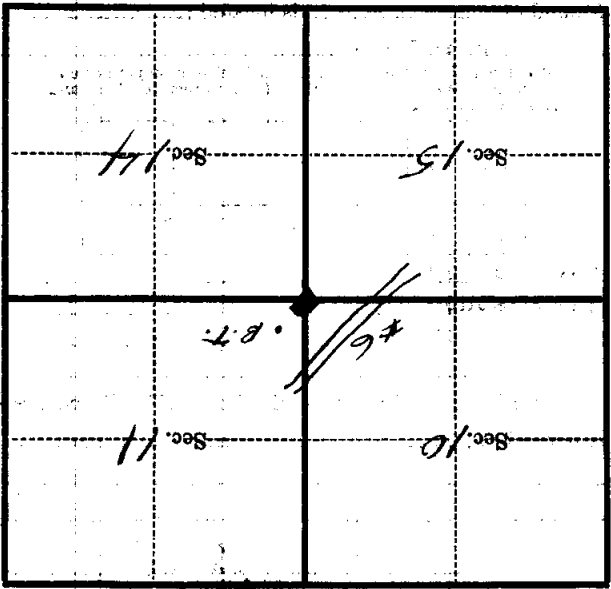
.70

from which this Corner bears S 70 W

side of tree

tree 4 inches diameter, on the S.W.

Metal Location Poster is on a Aspen



(Make sketch of topography near Corner)

T. 148

R. 25

Mer.

5-17

Form 874-B—Revised May, 1918  
 U. S. Department of Agriculture  
 FOREST SERVICE

J-17

CHIPPENAW NATIONAL FOREST  
 CORNERS OF THE PUBLIC SURVEY

T. 142 R. 25 Mer.

Sec. Corner common to Sections  
10, 11, 14, and 15

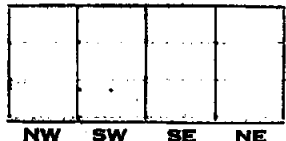
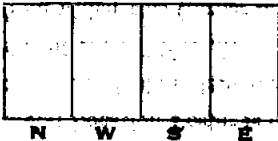
Corner consists of a \_\_\_\_\_ (not) in place  
 State condition \_\_\_\_\_

Dimensions above ground \_\_\_\_\_ inches

Sketch grooves, letters, figures, or notches, on proper face or edge.

CARDINAL POSITION

DIAGONAL POSITION



Mound of \_\_\_\_\_ is located \_\_\_\_\_

Pits are located \_\_\_\_\_

Sketch markings of Bearing Trees (or Rocks) in proper box and fill blanks below, giving bearings from Corner to Trees and Distances in Links.

Sec. <u>11</u>			
B T			

Species cedar

Diameter 4 1/2

Bearing N 52 E

Distance 4

Do you believe this to be a genuine Land Office Corner? Yes

If not, why? \_\_\_\_\_

*R. Defant*

(Signature)

*J. E.*

(Title)

7-1-40

(Date)

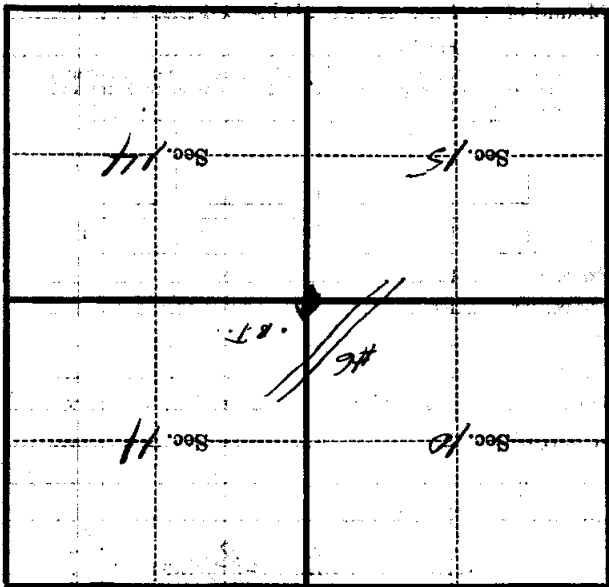
Corner again.  
Give any further facts which will aid in finding this

chains distant.

from which this Corner bears **S 70 W**

side of **tree**  
tree inches diameter, on the **S.W.**

Metal Location Poster is on a **Log**



(Make sketch of topography near Corner)

Mer.

R.

T.