

Form 574-B—Revised May, 1918
U. S. Department of Agriculture
FOREST SERVICE

NATIONAL FOREST

A13

CORNERS OF THE PUBLIC SURVEY

T141+142N R. 31 W. 5th Mer.

Section 7

Corner common to Sections

3, 4, 33, and 34

Corner consists of a cast iron pipe (not) in place

State condition good

Dimensions above ground 2 1/2 x 2 0 inches

Sketch grooves, letters, figures, or notches, on proper face or edge.

CARDINAL POSITION

DIAGONAL POSITION

None			

N W S E

NW SW SE NE

Mound of _____ is located _____

Pits are located _____

Sketch markings of Bearing Trees (or Rocks) in proper box and fill blanks below, giving bearings from Corner to Trees and Distances in Links.

Species None

Diameter _____

Bearing _____

Distance _____

Do you believe this to be a genuine Land Office Corner? Yes

If not, why? _____

Dorman J. Sutton

(Signature)

Engineer

(Title)

3/30/25

(Date)

Corner again.

Give any further facts which will aid in finding this

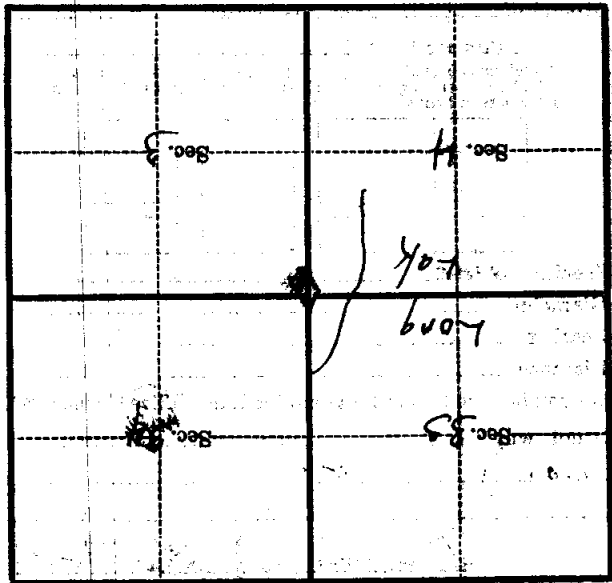
93 chains distant.

from which this Corner bears S 42° E

side of tree

tree 9 inches diameter, on the SE

Metal Location Poster is on a Red Oak



(Make sketch of topography near Corner)