

U. S. Department of Agriculture
FOREST SERVICE

Chippewa

NATIONAL FOREST

Noted J-21

CORNERS OF THE PUBLIC SURVEY

T. 141 R. 29 5 Mer.

See. Corner common to Sections

11, 12, 13, and 14

Corner consists of a G.L.O. Brass Cap (not) in place

State condition # Good

Dimensions above ground 10" inches

Sketch grooves, letters, figures, or notches, on proper face or edge.

CARDINAL POSITION

DIAGONAL POSITION

--	--	--	--

11	14	13	12
----	----	----	----

N W S E

NW SW SE NE

Mound of _____ is located _____

Pits are located _____

Sketch markings of Bearing Trees (or Rocks) in proper box and fill blanks below, giving bearings from Corner to Trees and Distances in Links.

	None		

Species Right of way cleared

Diameter for road

Bearing B.T. Taken out

Distance _____

Do you believe this to be a genuine Land Office Corner? Yes

If not, why? _____

R. S. McEachin

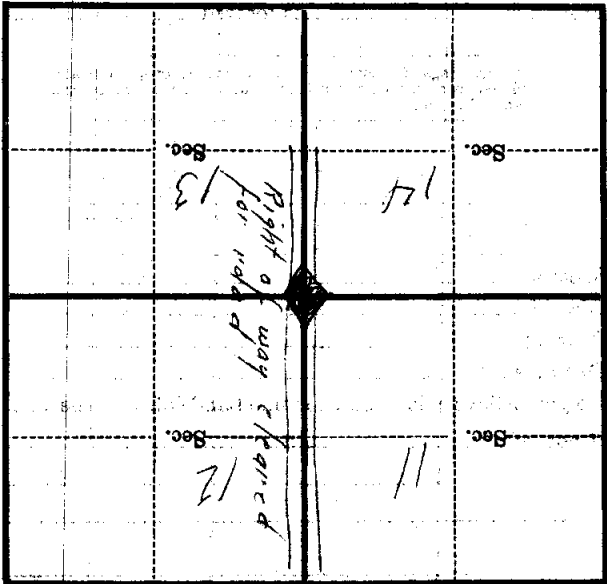
4/9/35
(Date)

Estimator
(Title)

J-21

Corner again
Got in center of Road
Right of way

Metal Location Poster is on a
tree 14" inches diameter, on the West
side of ~~the~~ Sec. 13
from which this Corner bears
chains distant.



(Make sketch of topography near Corner)

T. 141 R. 29

Mar. 5-21