

U. S. Department of Agriculture

FOREST SERVICE

Chippewa NATIONAL FOREST

Plotted N-17

CORNERS OF THE PUBLIC SURVEY

T. 141 N R. 29 W 5th Mer.

Section Corner common to Sections 15, 14, 22, and 23

Corner consists of a Brass 2" pipe (not) in place
State condition good

Dimensions above ground 12 inches

Sketch grooves, letters, figures, or notches, on proper face or edge.

CARDINAL POSITION

DIAGONAL POSITION

--	--	--	--

--	--	--	--

N W S E

NW SW SE NE

Mound of _____ is located _____

Pits are located _____

Sketch markings of Bearing Trees (or Rocks) in proper box and fill blanks below, giving bearings from Corner to Trees and Distances in Links.

Species _____

Diameter _____

Bearing _____

Distance _____

Do you believe this to be a genuine Land Office Corner? _____

If not, why? _____

Daniel Rose Jr.

(Signature)

April 9, 35

(Date)

(Title)

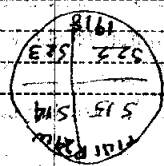
N-17

UNITED STATES DEPARTMENT OF AGRICULTURE

FOREST SERVICE

TOPOGRAPHIC LOCATION

CORNER OF ...



Corner again.

Give any further facts which will aid in finding this

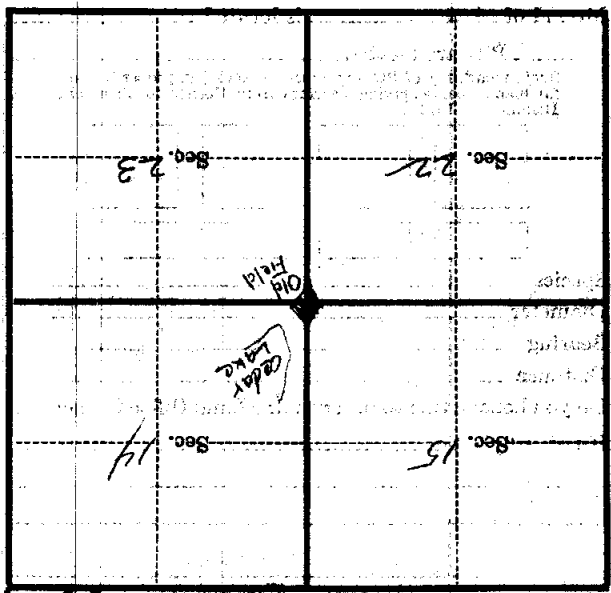
corner distant.

from which this Corner bears N 36° W

side of road

tree 6 inches diameter, on the NW

Metal Location Poster is on a W. B. 274



(Make sketch of topography near Corner)

T. 141 N. R. 29 W. 5th Mer. N-17