

U. S. Department of Agriculture
FOREST SERVICE

Chippewa NATIONAL FOREST

CORNERS OF THE PUBLIC SURVEY

T. 141 R. 29 S. 5 Mer.

Corner common to Sections 14, 601, 19, and 24

Corner consists of a 6.10 3/4 50 (not) in place
State condition

Dimensions above ground inches

Sketch grooves, letters, figures, or notches, on proper face or edge.

CARDINAL POSITION

DIAGONAL POSITION

	<u>24</u>		<u>19</u>
N	W	S	E

NW	SW	SE	NE

Mound of is located

Pits are located

Sketch markings of Bearing Trees (or Rocks) in proper box and fill blanks below, giving bearings from Corner to Trees and Distances in Links.

			<u>New B.T.</u>

Species Aspen
Diameter 1 1/2"
Bearing 210° E.
Distance 100 ft.

Do you believe this to be a genuine Land Office Corner? Yes

If not, why?

H. G. M. [Signature]
(Signature)

.....
(Title)

4 3 35
(Date)

D-1

*Corner again
lat. in center of road*

Give any further facts which will aid in finding this

18' Aspen chains distant.

from which this Corner bears

Due West

side of

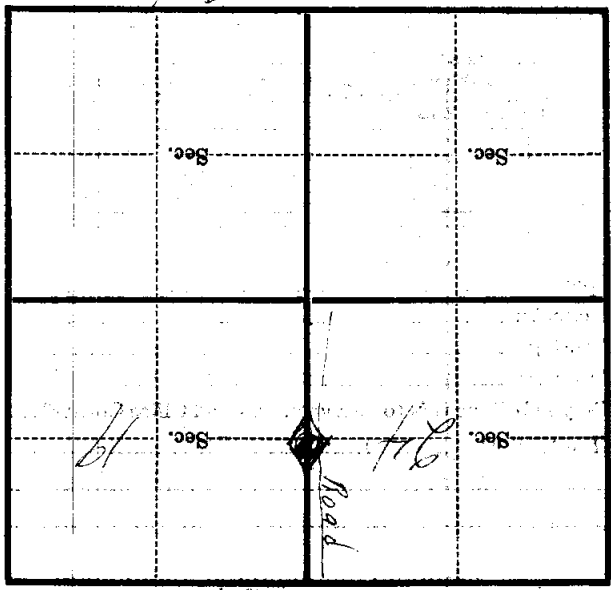
1/4 lot

tree *8* inches diameter, on the

Foot

Metal Location Poster is on a

Aspen



(Make sketch of topography near Corner)