

U. S. Department of Agriculture

FOREST SERVICE

N-8

CHIPPEWA NATIONAL FOREST

CORNERS OF THE PUBLIC SURVEY

T. 141 N R. 27 W 5 Mer.

E 1/16 Corner common to Sections

17, and 20

Corner consists of a Gov't Iron Post (rust) in place

State condition good

Dimensions above ground 18" inches

Sketch grooves, letters, figures, or notches, on proper face or edge.

CARDINAL POSITION

DIAGONAL POSITION

US	GLO		
S17	1/16S20		

N W S E

NW SW SE NE

Mound of _____ is located _____

Pits are located _____

Sketch markings of Bearing Trees (or Rocks) in proper box and fill blanks below, giving bearings from Corner to Trees and Distances in Links.

S17 1/16			
B.T.			

Species B.

Diameter 20"

Bearing N 0° E

Distance 1.00

Do you believe this to be a genuine Land Office Corner? Yes

If not, why? _____

R.P.

(Signature)

Estimator

(Title)

4/19/35

(Date)

Blank lined area for notes or descriptions.

Corner again.

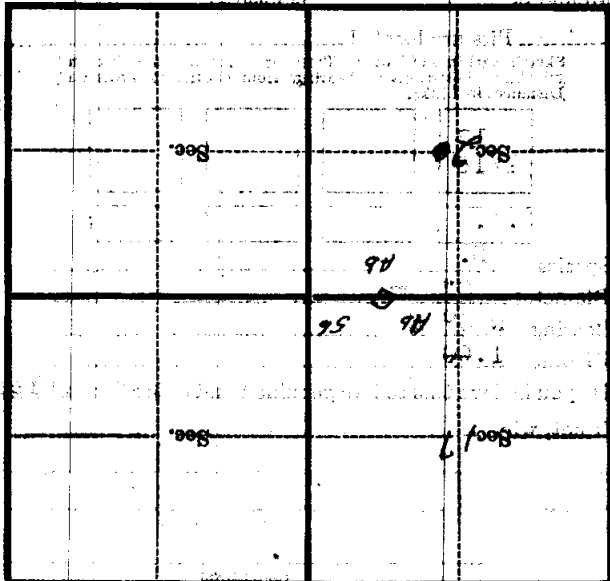
Give any further facts which will aid in finding the chains distant.

from which this Corner bears S 75° E

side of tree

tree 8" inches diameter, on the

Metal Location Poster is on a



(Make sketch of topography near Corner)