

Form 874-9—Revised May, 1918  
U. S. Department of Agriculture  
FOREST SERVICE

c-5

CHIPPEWA NATIONAL FOREST

CORNERS OF THE PUBLIC SURVEY

T. 141 R. 27 5 Mer.

Corner common to Sections  
6, and 5

Corner consists of a G. L. O. Brass Cap ~~(not)~~ in place

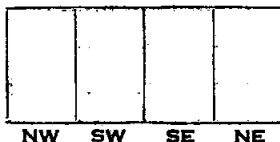
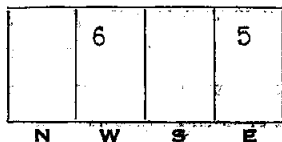
State condition good

Dimensions above ground 10 inches

Sketch grooves, letters, figures, or notches, on proper face or edge.

CARDINAL POSITION

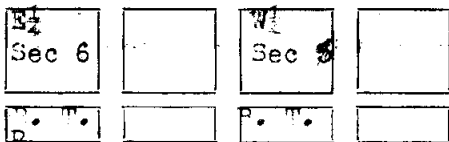
DIAGONAL POSITION



Mound of is located

Pits are located

Sketch markings of Bearing Trees (or Rocks) in proper box and fill blanks below, giving bearings from Corner to Trees and Distances in Links.



Species Red Pine Red Pine

Diameter 14" 14"

Bearing N 89° 30' W N 3° E

Distance 0.83 chs. 0.50 chs.

Do you believe this to be a genuine Land Office Corner? Yes

If not, why?

Gilbert L. Byroad  
(Signature)

1-12-39  
(Date)

Assistant Leader C. C. C.  
(Title)

Corner again.

Give any further facts which will aid in finding this

chains distant.

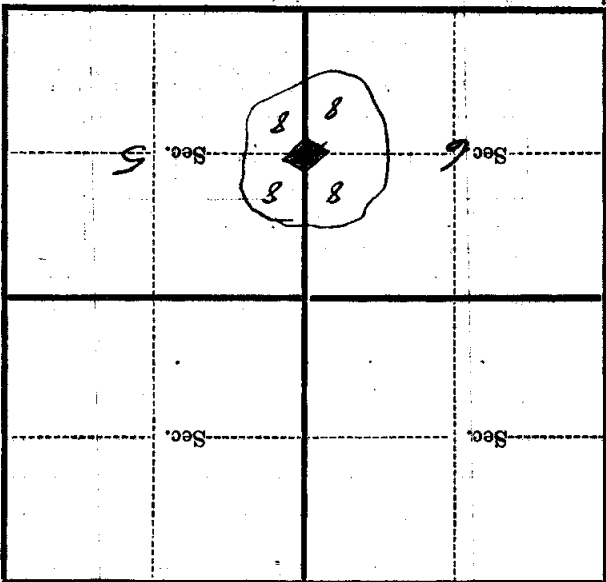
0.14

from which this Corner bears S 81° E

side of the tree

tree 10 inches diameter, on the S. E.

Metal Location Poster is on a Aspen



(Make sketch of topography near Corner)

Mer. 7-5

5

27

R.

141

T.