

U. S. Department of Agriculture

FOREST SERVICE

CHIPPEWA

D-5

NATIONAL FOREST

CORNERS OF THE PUBLIC SURVEY

T. 141 R. 27 5 Mer. 1/16 # 14

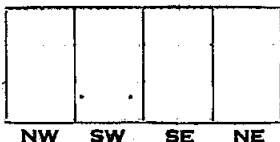
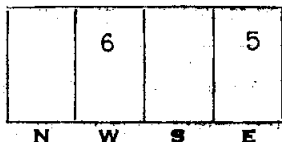
Corner common to Sections 6, and 5

Corner consists of a G.L.O.B Brass Cap in place State condition good

Dimensions above ground 8 inches Sketch grooves, letters, figures, or notches, on proper face or edge.

CARDINAL POSITION

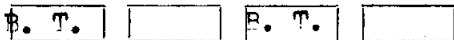
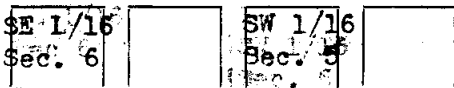
DIAGONAL POSITION



Mound of is located

Pits are located

Sketch markings of Bearing Trees (or Rocks) in proper box and fill blanks below, giving bearings from Corner to Trees and Distances in Links.



Species Red Pine Red Pine Diameter 12" 14" Bearing S 61° W N 23° E Distance 1.56 Chs. 0.91 Chains

Do you believe this to be a genuine Land Office Corner? Yes

If not, why?

Gilbert L. Byroad

(Signature)

1-13-39

(Date)

Assistant Leader G. C. G.

(Title)

Corner again.

Give any further facts which will aid in finding this

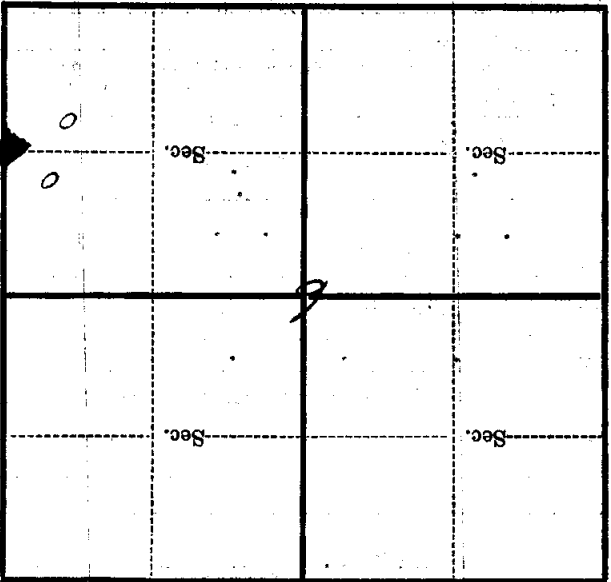
0.91 chains distant.

from which this Corner bears S 23° W

side of the tree

tree 14" inches diameter, on the S. W.

Metal Location Poster is on a Red Pine



(Make sketch of topography near Corner)

D-5
Mer.

5

R. 27

T. 141