

U. S. Department of Agriculture
FOREST SERVICE

R-25

CHIPPEWA NATIONAL FOREST

CORNERS OF THE PUBLIC SURVEY

T. 141 R. 26 5 Mer.
Sec. _____

Corner common to Sections
25, 24, 19, and 30

Corner consists of a post (not) in place
State condition good

Dimensions above ground 30" inches
Sketch grooves, letters, figures, or notches, on proper face or edge.

CARDINAL POSITION

DIAGONAL POSITION

--	--	--	--

N W S E

--	--	--	--

NW SW SE NE

Mound of _____ is located _____

Pits are located _____

Sketch markings of Bearing Trees (or Rocks) in proper box and fill blanks below, giving bearings from Corner to Trees and Distances in Links.

Species _____

Diameter _____

Bearing _____

Distance _____

Do you believe this to be a genuine Land Office Corner? No

If not, why? Co. Corner

R. Defant
(Signature)

J. E.
(Title)

(Date)

Corner on East side of road

Corner again.

Give any further facts which will aid in finding this

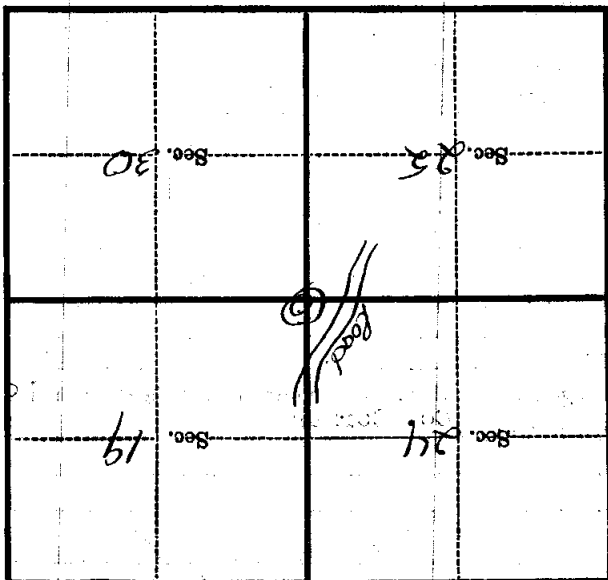
chains distant.

from which this Corner bears at corner

side of post

tree 6 inches diameter, on the West

Metal Location Poster is on a Corner post



(Make sketch of topography near Corner)

Forms 874-9—Revised May, 1918
 U. S. Department of Agriculture
 FOREST SERVICE

R-25

OHIO NATIONAL FOREST

CORNERS OF THE PUBLIC SURVEY

T. 141 R. 26 S. Mer.

300. Corner common to Sections
25, 24, 19, and 30

Corner consists of a post (not) in place
good
 State condition

Dimensions above ground 30" inches

Sketch grooves, letters, figures, or notches, on proper face or edge.

CARDINAL POSITION

DIAGONAL POSITION

N	W	S	E

NW	SW	SE	NE

Mound of _____ is located _____

Pits are located _____

Sketch markings of Bearing Trees (or Rocks) in proper box and fill blanks below, giving bearings from Corner to Trees and Distances in Links.

Species _____

Diameter _____

Bearing _____

Distance _____

Do you believe this to be a genuine Land Office Corner? Co. Corner

If not, why? _____

R. Dyant
 (Signature)

(Date)

(Title)

CORNER ON THE SIDE OF ROAD

Corner again.

Give any further facts which will aid in finding this

chains distant.

from which this Corner bears

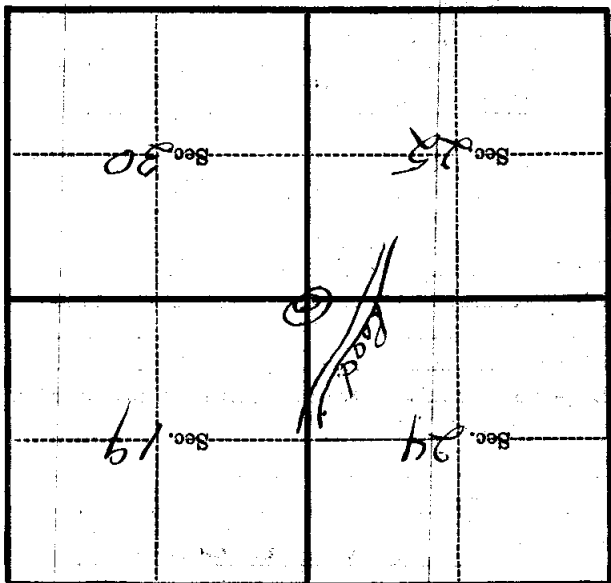
at corner

side of post

tree 6 inches diameter, on the

post

Metal Location Poster is on a Corner post



(Make sketch of topography near Corner)

T. 141

R. 2

B

Mer.