

K-23

U. S. Department of Agriculture

FOREST SERVICE

J-23

CHIPPEWA NATIONAL FOREST

CORNERS OF THE PUBLIC SURVEY

T. 141 R. 26 5 Mer.

#5- 1/16 Corner common to Sections 13, and

Corner consists of a (not) in place State condition

Dimensions above ground inches

Sketch grooves, letters, figures, or notches, on proper face or edge.

CARDINAL POSITION

DIAGONAL POSITION

N	O	N	E
---	---	---	---

N	O	N	E
---	---	---	---

N W S E

NW SW SE NE

Mound of is located

Pits are located

Sketch markings of Bearing Trees (or Rocks) in proper box and fill blanks below, giving bearings from Corner to Trees and Distances in Links.

Species

Diameter

Bearing

Distance NONE

Do you believe this to be a genuine Land Office Corner? No.

If not, why? Because the farmer said it was a former G.L.O. Corner and it is a brobable G.L.O.

R. T. DeFant Raymond T. DeFant (Signature)

Jr. Civil Engineer (Title)

2-27-40

(Date)

141

It is on the east side of the road on the road shoulder.

Corner again.

Give any further facts which will aid in finding the

chains distant.

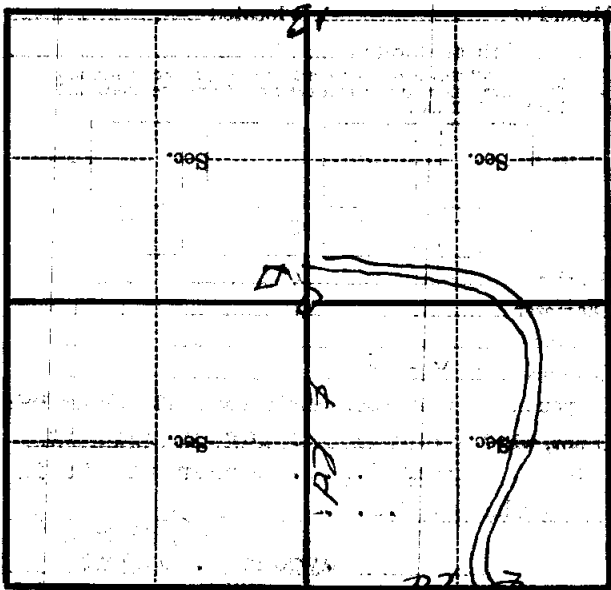
39

from which this Corner bears West

side of telephone post

tree 8 inch diameter, on the West

Metal Location Post is on a telephone pole



(Make sketch of topography near Corner)

Form 874-9—Revised May, 1918
U. S. Department of Agriculture
FOREST SERVICE

CHIFFEWA NATIONAL FOREST

~~_____~~
K-23

CORNERS OF THE PUBLIC SURVEY

T. 141 R. 26 Mer.

#5-1/16 Corner common to Sections
13, and _____

Corner consists of a _____ (not) in place
State condition _____

Dimensions above ground _____ inches
Sketch grooves, letters, figures, or notches, on proper face or edge.

CARDINAL POSITION			
N	W	S	E

DIAGONAL POSITION			
NW	SW	SE	NE

Mound of _____ is located _____

Pits are located _____

Sketch markings of Bearing Trees (or Rocks) in proper box and fill blanks below, giving bearings from Corner to Trees and Distances in Links.

Species _____

Diameter _____

Bearing _____

Distance NONE _____

Do you believe this to be a genuine Land Office Corner? No.

If not, why? Because the farmer said it was a former G.L.O. Corner and it is a probable G.L.O.

R. T. DeFaut
Raymond T. DeFaut
(Signature)
Jr. Civil Engineer
(Title)

8-27-40

107

read on the road shoulder.

It is on the East side of the

Corner again.

Give any further facts which will aid in finding this

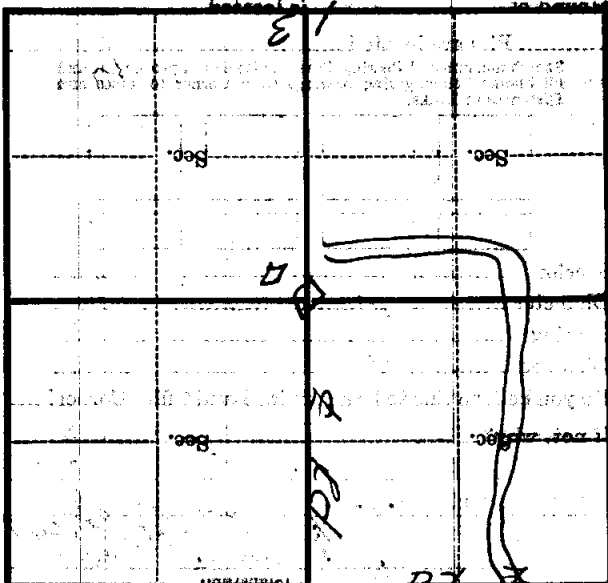
chain's distant

from which this Corner bears

side of telephone post

tree inches diameter, on the West

Metal Location Post is on a telephone pole



(Make sketch of topography near Corner)