

U. S. Department of Agriculture  
FOREST SERVICE

J-21 P

Chippewa NATIONAL FOREST

CORNERS OF THE PUBLIC SURVEY

T. 141N R. 26W 5 Mer.

Sec Cor Corner common to Sections

11, 12, 13, and 14

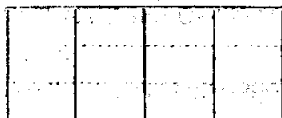
Corner consists of a post (not) in place  
State condition

Dimensions above ground inches

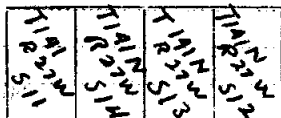
Sketch grooves, letters, figures, or notches, on proper face or edge.

CARDINAL POSITION

DIAGONAL POSITION



N W S E

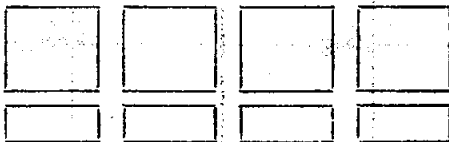


NW SW SE NE

Mound of is located

Pits are located

Sketch markings of Bearing Trees (or Rocks) in proper box and fill blanks below, giving bearings from Corner to Trees and Distances in Links.



Species

Diameter

Bearing

Distance

Do you believe this to be a genuine Land Office Corner?

If not, why?

*Handwritten signature*  
(Signature)

ENC.

(Title)

3/5/35  
(Date)

UNITED STATES DEPARTMENT OF AGRICULTURE

FOREST SERVICE

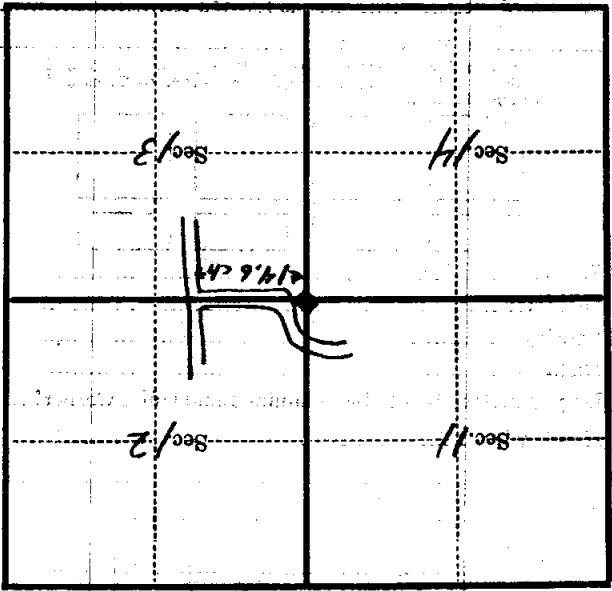
STANDARD FORM NO. 1

REPORT OF FIELD WORK

DATE: \_\_\_\_\_  
LOCALITY: \_\_\_\_\_  
CAMP: \_\_\_\_\_  
CORNERS: \_\_\_\_\_

Corner again.

Give any further facts which will aid in finding this  
chains distant.  
from which this Corner bears  
side of  
tree ..... inches diameter, on the  
Metal Location Poster is on a



(Make sketch of topography near Corner)