

U. S. Department of Agriculture
FOREST SERVICE

2-9

CHIPPENAW NATIONAL FOREST

CORNERS OF THE PUBLIC SURVEY

T. 141 R. 26 S. Mer.

1/2

Corner common to Sections

8, and 9

Corner consists of a pipe in place

State condition good

Dimensions above ground 26 inches

Sketch grooves, letters, figures, or notches, on proper face or edge.

CARDINAL POSITION

DIAGONAL POSITION

		N O N E	

N W S E

NW SW SE NE

Mound of is located

Pits are located

Sketch markings of Bearing Trees (or Rocks) in proper box and fill blanks below, giving bearings from Corner to Trees and Distances in Links.

1/2 8

--

--

--

B.T.

--

--

--

Species Pine

Diameter 24

Bearing N 50° E

Distance 50 lks.

Do you believe this to be a genuine Land Office Corner? No.

If not, why? County Corner

R. T. DeFant

R. T. DeFant

(Signature)

2-14-40

(Date)

Jr. Civil Engineer

(Title)

10 chains South of old #34

Give any further facts which will aid in finding the

chains distant

from which this Corner bears

N. 8. E.

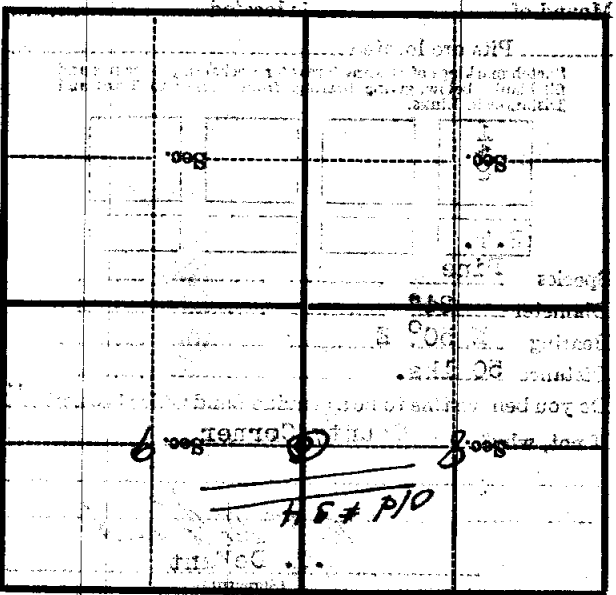
side of

tree 24 inches diameter, on the

N. 8. E.

Metal Location Post is on a

N. 8. E.



(Make sketch of topography near Corners)

U. S. Department of Agriculture

FOREST SERVICE

6-9

CHIPPEWA

NATIONAL FOREST

CORNERS OF THE PUBLIC SURVEY

T. 141 R. 26 Mer.

Corner common to Sections

Corner consists of a pipe in place

State condition good

Dimensions above ground inches

Sketch grooves, letters, figures, or notches, on proper face or edge.

CARDINAL POSITION

DIAGONAL POSITION

		N O N E	
N	W	S	E

NW	SW	SE	NE

Mound of is located

Pits are located

Sketch markings of Bearing Trees (or Rocks) in proper box and fill blanks below, giving bearings from Corner to Trees and Distances in Links.

--	--	--	--

B.T.			
------	--	--	--

Species Pine

Diameter 24"

Bearing N 90° E

Distance 20 lks.

Do you believe this to be a genuine Land Office Corner? No.

If not, why? County Corner

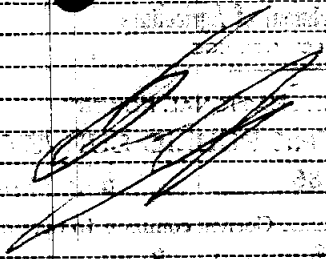
R. T. DeFaut
R. T. DeFaut

(Signature)
Jr. Civil Engineer

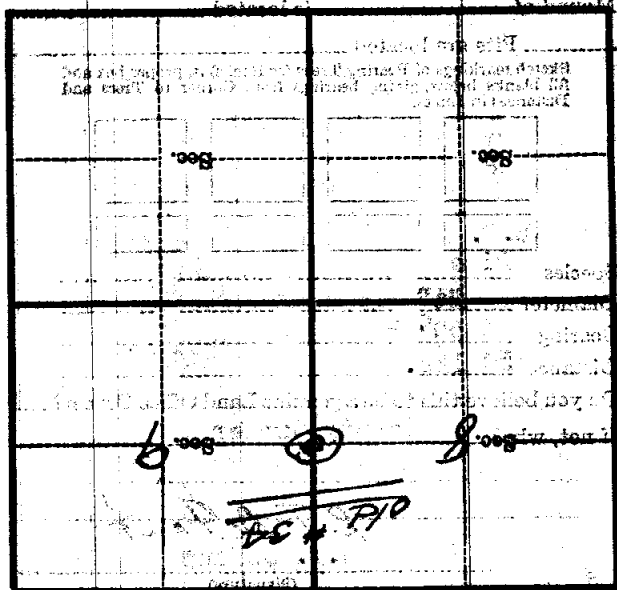
8-14-40

(Date)

(Title)



to Center South of old Post
 Corner again.
 Give any further facts which will aid in finding the
 distance distant.
 from which this Corner bears
 side of
 trees inches diameter, on the
 Metal Location Post is on a



(Make sketch of topography and Corner)