

Form 874-G—Revised May, 1918  
U. S. Department of Agriculture  
FOREST SERVICE

A-1  
Shaw to 8  
2-1-19  
1999

CHIPPEWA NATIONAL FOREST

CORNERS OF THE PUBLIC SURVEY

T. 141 ~~140~~ R. 26 27 5 Mer.

Section 140

Corner common to Sections

(36), (31), 6, and 1

Corner consists of a iron pipe (not) in place

State condition good

Dimensions above ground \_\_\_\_\_ inches

Sketch grooves, letters, figures, or notches, on proper face or edge.

CARDINAL POSITION

DIAGONAL POSITION

N	W	S	E

NW	SW	SE	NE

Mound of \_\_\_\_\_ is located \_\_\_\_\_

Pits are located \_\_\_\_\_

Sketch markings of Bearing Trees (or Rocks) in proper box and fill blanks below, giving bearings from Corner to Trees and Distances in Links.


Species Jack Pine

Diameter 8" D.B.H.

Bearing N.E. of corner

Distance 3 chains

Do you believe this to be a genuine Land Office Corner? Yes  
If not, why?

N. F. Shaw

(Signature)

ENGINEER

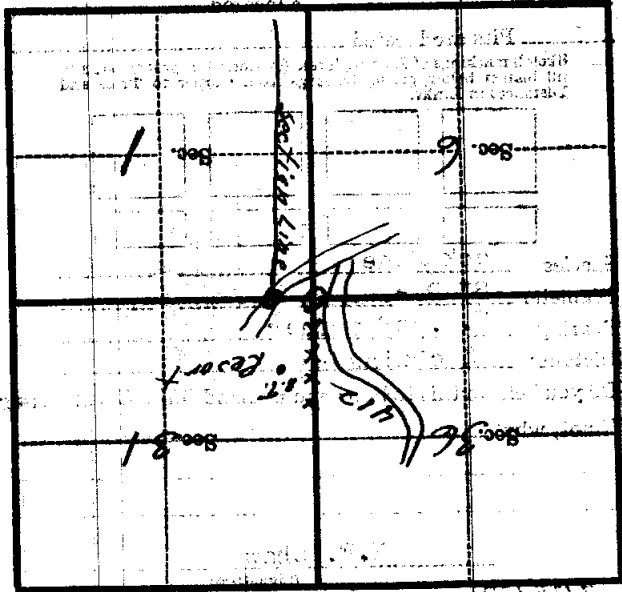
(Title)

3/15/35

(Date)

Section 6  
 Section 36  
 Section 31  
 Section 1

Metal Location Post is on a **Range Post**  
 near **stake**  
 side of  
 from which this Corner bears  
 chains distant.  
 Give any further facts which will aid in finding this  
 Corner again.



(Make sketch of topography near Corner)

U. S. Department of Agriculture  
FOREST SERVICE

P.  
A-1  
Z  
should be  
Z R man  
1999

Chippewa NATIONAL FOREST

CORNERS OF THE PUBLIC SURVEY

T. ~~141~~ <sup>140</sup> R. 26-27 5<sup>th</sup> Mer.

Corner common to Sections  
36, 31, 6, and 1

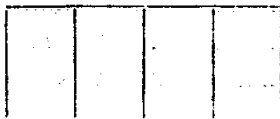
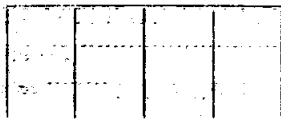
Corner consists of a iron pipe (not) in place  
State condition good.

Dimensions above ground \_\_\_\_\_ inches

Sketch grooves, letters, figures, or notches, on proper face or edge.

CARDINAL POSITION

DIAGONAL POSITION



N W S E

NW SW SE NE

Mound of \_\_\_\_\_ is located \_\_\_\_\_

Pits are located \_\_\_\_\_

Sketch markings of Bearing Trees (or Rocks) in proper box and fill blanks below, giving bearings from Corner to Trees and Distances in Links.



Species Jack Pine

Diameter 3" D.B.H.

Bearing N.E. of cor.

Distance 3 ch.

Do you believe this to be a genuine Land Office Corner? yes

If not, why? \_\_\_\_\_

Norman Parker  
(Signature)

Nov. 15-35  
(Date)

Engineer  
(Title)

Faint, illegible handwriting on the top portion of the page.

Corner again.

Give any further facts which will aid in finding this

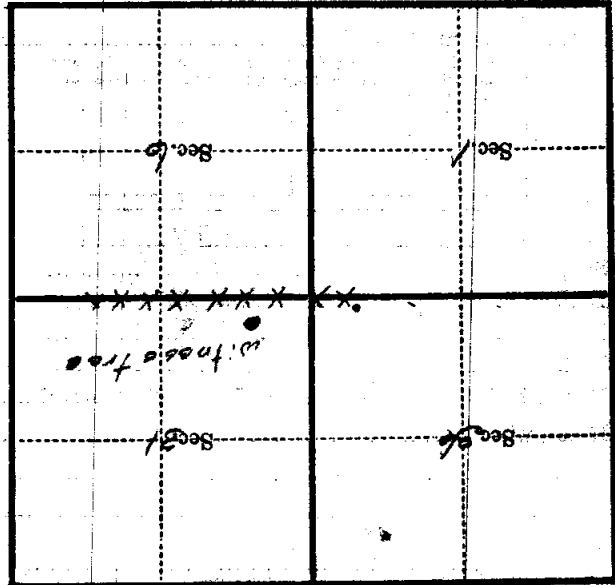
chains distant.

from which this Corner bears

side of

tree inches diameter, on the *Near stake*

Metal Location Poster is on a *Fence post*



(Make sketch of topography near Corner)