

U. S. Department of Agriculture
FOREST SERVICE

R

NATIONAL FOREST

CORNERS OF THE PUBLIC SURVEY

T. 141 N R. 25 W 5th Mer.

$\frac{1}{4}$ Corner common to Sections
21, 22, and

Corner consists of a (not) in place
State condition

Dimensions above ground inches

Sketch grooves, letters, figures, or notches, on proper face or edge.

CARDINAL POSITION

DIAGONAL POSITION

--	--	--	--

N W S E

--	--	--	--

NW SW SE NE

Mound of is located

Pits are located

Sketch markings of Bearing Trees (or Rocks) in proper box and
fill blanks below, giving bearings from Corner to Trees and
Distances in Links.

1/4 52			

Species Cedar (snag 4' high)

Diameter 10"

Bearing

Distance

Do you believe this to be a genuine Land Office Corner? Yes

If not, why?

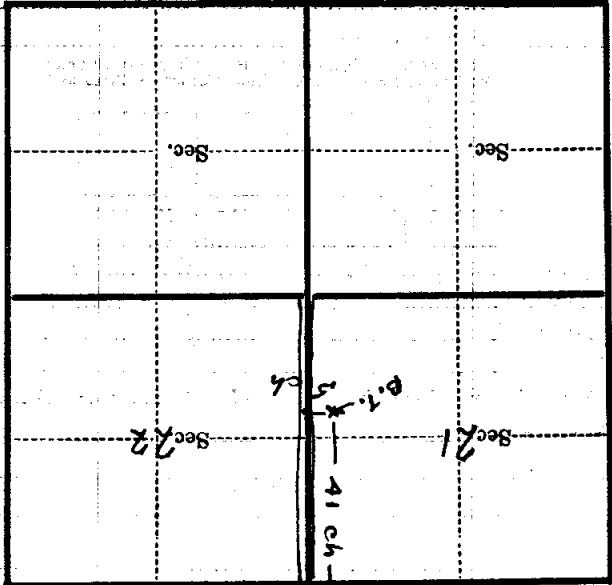
H. K. Kelly
(Signature)

ENGINEER
(Title)

2/26/35
(Date)

Metal Location Poster is on a tree inches diameter, on the side of from which this Corner bears chains distant.

Give any further facts which will aid in finding this Corner again.



(Make sketch of topography near Corner)

T. 141 R. 05 S. Mer. P-13

Chippewa NATIONAL FOREST

CORNERS OF THE PUBLIC SURVEY

T. 141 N R. 25 W 5th Mer.
1/4 Corner common to Sections
21, and 22

Corner consists of a _____ (not) in place
State condition _____

Dimensions above ground _____ inches
Sketch grooves, letters, figures, or notches, on proper face or edge.
CARDINAL POSITION DIAGONAL POSITION

N	W	S	E

NW	SW	SE	NE

Mound of _____ is located _____

Pits are located _____

Sketch markings of Bearing Trees (or Rocks) in proper box and fill blanks below, giving bearings from Corner to Trees and Distances in Links.

<u>1/4</u> <u>S 21</u>			

Species Cedar (5 trees 9' high)

Diameter 10"

Bearing _____

Distance _____

Do you believe this to be a genuine Land Office Corner? Yes

If not, why? No. Can see Ca
road survey

H. M. K.
(Signature)

2/26/35
(Date)

Engineer
(Title)

U. S. DEPARTMENT OF AGRICULTURE

NATIONAL FOREST

CORNER OF THE PUBLIC HIGHWAY

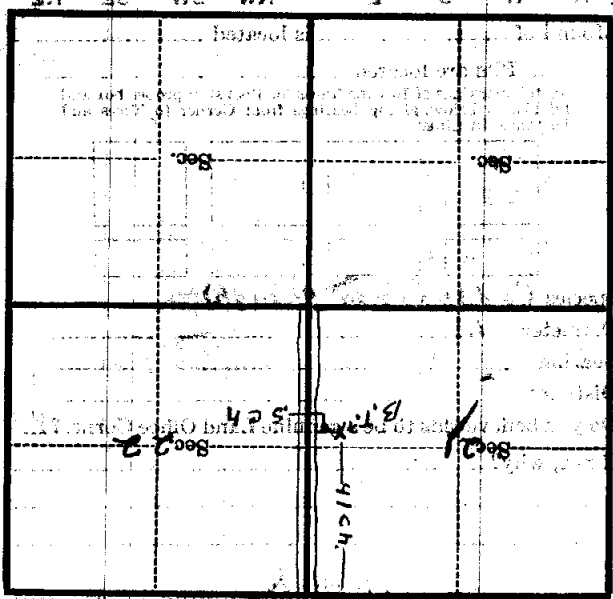
Corner of a ...
Corner again

Give any further facts which will aid in finding this
chains distant.

from which this Corner bears
side of

tree inches diameter, on the

Metal Location Poster is on a



(Make sketch of topography near Corner)

T. 141 R. 25 S. Mer.

Form 87A - Revised May 1918
U. S. Department of Agriculture
FOREST SERVICE

Chippewa NATIONAL FOREST

CORNERS OF THE PUBLIC SURVEY

T. 14 N R. 25 W S. 12 Mer.

1/4 Corner common to Sections
21 and 22

Corner consists of a _____ (not in place)

State condition _____

Dimensions above ground _____ inches

Sketch grooves, letters, figures, or notches, on proper face or edge.

CARDINAL POSITION

DIAGONAL POSITION

N W S E NW SW SE NE

Mound of _____ is located _____

Pits are located _____

Sketch markings of Bearing Trees (or Rocks) in proper box and fill blanks below, giving bearings from Corner to Trees and Distances in Links.

1/4 52'			

Species Cedar

Diameter 10"

Bearing _____

Distance _____

Do you believe this to be a genuine Land Office Corner? Yes

If not, why? No cause

no 2d survey

H. M. K.

(Signature)

2/26/35

(Date)

Engineer

(Title)

