

U. S. DEPARTMENT OF AGRICULTURE
FOREST SERVICE

Patrol E-91

Chippewa Unit NATIONAL FOREST

CORNERS OF THE PUBLIC SURVEY

T. 60 R. 26 A Mer.

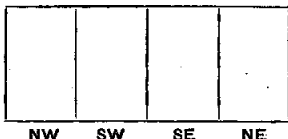
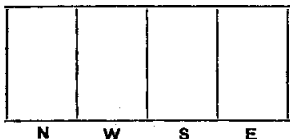
1/4 Corner common to Sections
4 and 7

Corner consists of a _____ (not) in place
State condition _____

Dimensions above ground _____ inches.
Sketch grooves, letters, figures, or notches, on proper face or edge.

CARDINAL POSITION

DIAGONAL POSITION



Mound of _____ is located _____

Pits are located _____

Sketch markings of Bearing Trees (or Rocks) in proper box and fill blanks below, giving bearings from Corner to Trees and Distances in Links.



Species Populus sp.

Diameter _____

Bearing _____

Distance _____

Do you believe this to be a genuine Land Office Corner? yes

If not, why? _____

S. Kimmel

Signature.

Mar 6

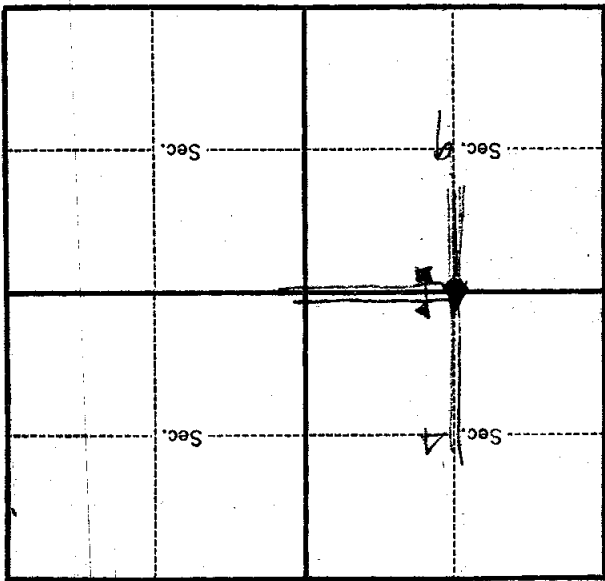
Date.

Chief Surveyman

Title.

T. 60 R. 26 Mer. 4

8-3027 (Make sketch of topography near Corner.)



Metal Location Poster is on a
 tree _____ inches diameter, on the
 side of _____
 from which this Corner bears _____
 chains distant.
 Give any further facts which will aid in finding this
 Corner again.

21 West of junction of
 N. 40. 12 of 1/2 section of
 Sec. 9 of T. 60 R. 26 Mer. 4

Form 874-0—Revised May, 1918
U. S. Department of Agriculture
FOREST SERVICE

111

Chippewa NATIONAL FOREST
CORNERS OF THE PUBLIC SURVEY

T. 60 N R. 26 W 4 Mer.

1/4 Corner common to Sections
4, and 9

Corner consists of a _____ (not) in place
State condition _____

Dimensions above ground _____ inches

Sketch grooves, letters, figures, or notches, on proper face or edge.

CARDINAL POSITION

DIAGONAL POSITION

--	--	--	--

--	--	--	--

N W S E

NW SW SE NE

Mound of _____ is located _____

Pits are located _____

Sketch markings of Bearing Trees (or Rocks) in proper box and fill blanks below, giving bearings from Corner to Trees and Distances in Links.

T60 R26 S4			
B.T			

Species Poplar Stub

Diameter 9"

Bearing SE

Distance _____

Do you believe this to be a genuine Land Office Corner? No

If not, why? B.T. does not check with
G.L.O. Notes

Sid Rommel

(Signature)

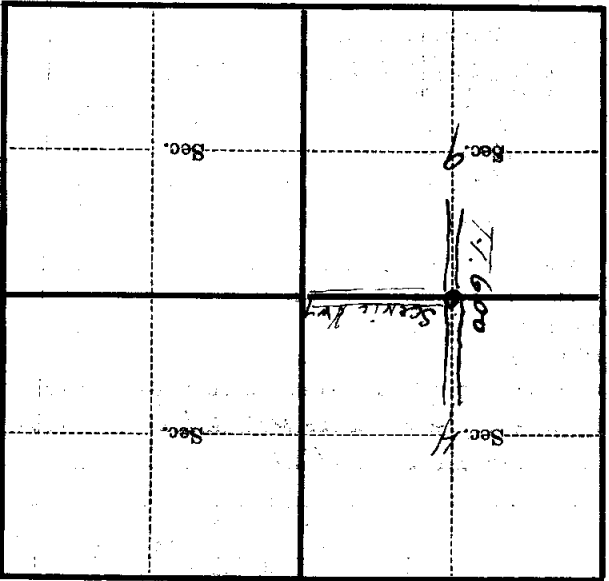
Compass Man

(Title)

11/6/33
(Date)

BT W. d. Junction of roads.
2 chs 8 from edge of road
Rest Haven sign
Corner again.

Give any further facts which will aid in finding this
chains distant.
from which this Corner bears
side of
tree inches diameter, on the
Metal Location Poster is on a



(Make sketch of topography near Corner)

T. R. Mer.