

U. S. Department of Agriculture
FOREST SERVICE

Chippewa NATIONAL FOREST

CORNERS OF THE PUBLIC SURVEY

T. 60 N R. 26 W 4 th Mer.

Corner common to Sections
32, and 33

Corner consists of a B.T. (not) in place

State condition Good

Dimensions above ground inches

Sketch grooves, letters, figures, or notches, on proper face or edge.

CARDINAL POSITION

DIAGONAL POSITION

--	--	--	--

--	--	--	--


N W S E

NW SW SE NE

Mound of is located

Pits are located

Sketch markings of Bearing Trees (or Rocks) in proper box and fill blanks below, giving bearings from Corner to Trees and Distances in Links.

 S			
B.T.			

Species W.P. Stump

Diameter 10

Bearing S45W

Distance

Do you believe this to be a genuine Land Office Corner?

If not, why?

Wm. J. Doyle

(Signature)

Estimator

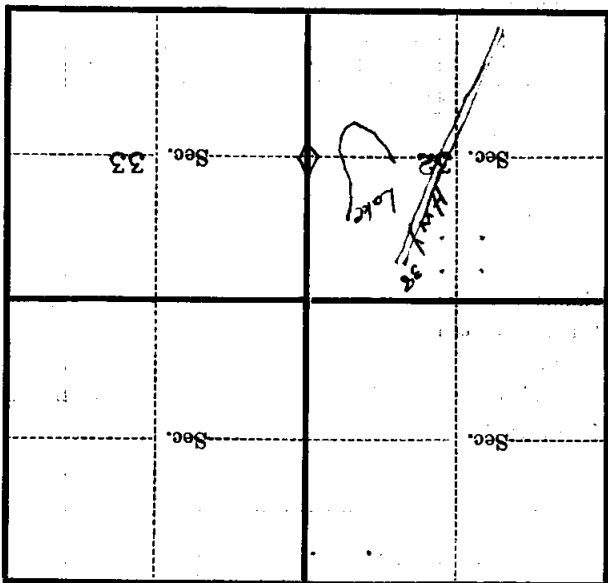
(Title)

10/17/33

(Date)

Corner again.
Creek 42 links wide bearing
N85°W - 41 links S6°E from post
to right bank of creek.

Metal Location Poster is on a
tree inches diameter, on the
side of
from which this Corner bears
chains distant.
Give any further facts which will aid in finding this



(Make sketch of topography near Corner)

T. 60 N R. 26 W 4th P Mer.

U. S. Department of Agriculture

FOREST SERVICE

protected

NATIONAL FOREST

x-9

CORNERS OF THE PUBLIC SURVEY

T. 60 R. 26 4 Mer.

1/4 Corner common to Sections 32, and 33

Corner consists of a B.T. ~~(set)~~ in place
State condition Good

Dimensions above ground _____ inches.

Sketch grooves, letters, figures, or notches, on proper face or edge.

CARDINAL POSITION

DIAGONAL POSITION

N	W	S	E

NW	SW	SE	NE

Mound of _____ is located _____

_____ Pits are located _____

Sketch markings of Bearing Trees (or Rocks) in proper box and fill blanks below, giving bearings from Corner to Trees and Distances in Links.

<u>1/4</u> <u>5</u>			
<u>B.T.</u>			

Species W.P. Stam.

Diameter 10

Bearing S. 45. W

Distance _____

Do you believe this to be a genuine Land Office Corner? yes

If not, why? _____

[Signature]

(Signature)

[Date]

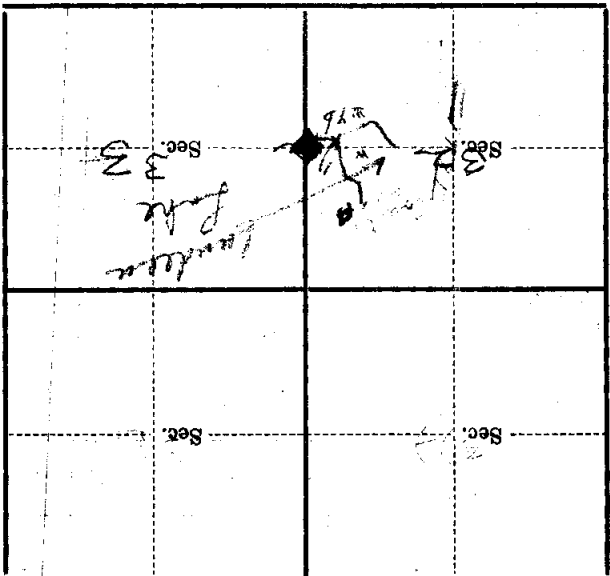
(Date)

[Title]

(Title)

Corner again.
Corner N 21.5 W 112.5 E bearing
N 83 W. 41 L. 50.6 E from post
to right bank of creek

Metal Location Poster is on a
tree inches diameter, on the
side of
from which this Corner bears
chains distant.
Give any further facts which will aid in finding this



(Make sketch of topography near Corner)

T. 60 R. 26 Mer. 4