

U. S. Department of Agriculture

FOREST SERVICE

Chippewa NATIONAL FOREST

CORNERS OF THE PUBLIC SURVEY

T. 60N. R. 26W 4th Mer.

Quarter Corner common to Sections

29, and 30

Corner consists of an Aspen Post (not) in place

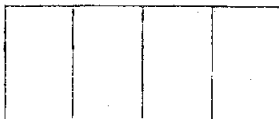
State condition Good

Dimensions above ground 30 inches

Sketch grooves, letters, figures, or notches, on proper face or edge.

CARDINAL POSITION

DIAGONAL POSITION



N W S E



NW SW SE NE

Mound of is located

Pits are located

Sketch markings of Bearing Trees (or Rocks) in proper box and fill blanks below, giving bearings from Corner to Trees and Distances in Links.



Species

Diameter

Bearing

Distance

Do you believe this to be a genuine Land Office Corner? NO

If not, why? BTS and Corner lost

Established by Orig line tree and Lake shore South.

J.A. Gjelberg

(Signature)

Jr. Civil Eng.

(Title)

7/2/37

(Date)

Corner again.

Give any further facts which will aid in finding this

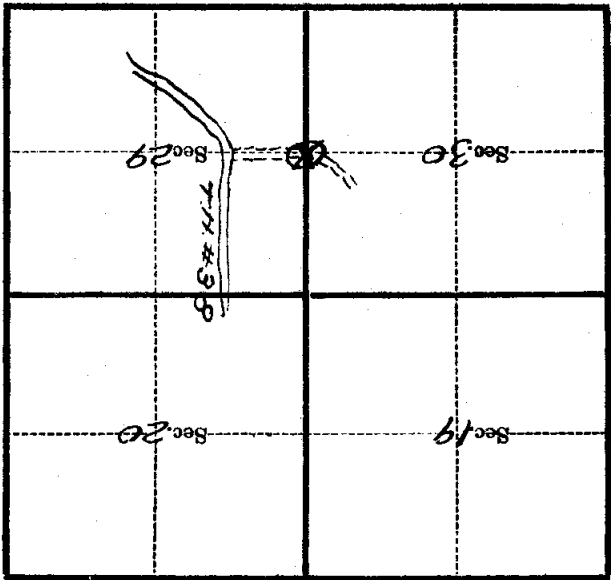
045 chains distant.

from which this Corner bears S. 55.57 E

side of tree

tree 5 inches diameter, on the SE

Metal Location Poster is on an Aspen



(Make sketch of topography near Corner)

T. 60N. R. 26W. 4th P. Mer.

U. S. Department of Agriculture
FOREST SERVICE

Chippewa NATIONAL FOREST

CORNERS OF THE PUBLIC SURVEY

T. 60 N R. 25 W Mer. 7

1/4 Corner common to Sections

29 and 30

Corner consists of a 3" Post (not) in place

State condition good

Dimensions above ground 29 inches

Sketch grooves, letters, figures, or notches, on proper face or edge.

CARDINAL POSITION

DIAGONAL POSITION

	<u>1/4 S</u>		<u>1/4 S</u>
	<u>30</u>		<u>29</u>

N W S E

NW SW SE NE

Mound of _____ is located _____

Pits are located _____

Sketch markings of Bearing Trees (or Rocks) in proper box and fill blanks below, giving bearings from Corner to Trees and Distances in Links.

NONE

Species _____

Diameter _____

Bearing _____

Distance _____

Do you believe this to be a genuine Land Office Corner? _____

If not, why? _____

N. L. Corbin

(Signature)

J. S. Forister

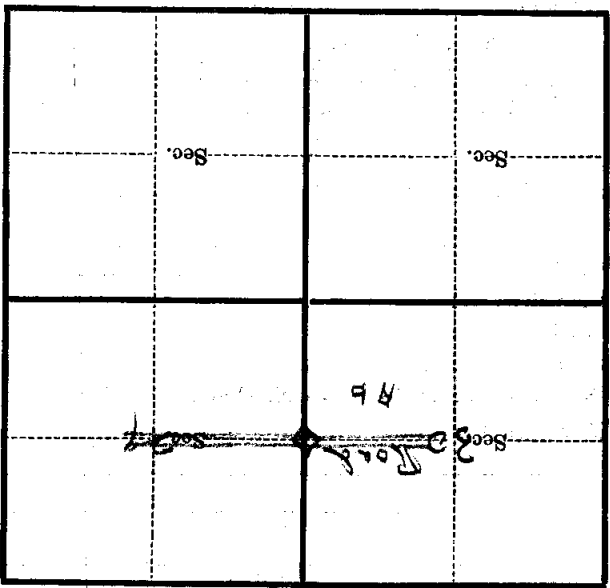
(Title)

6/9/35

(Date)

Corner again.
 about 5 chs. so of road which
 follows down $\frac{1}{4}$ line of point
 whose sec. line

Give any further facts which will aid in finding this
 chains distant.
 25
 from which this Corner bears
 North
 side of
 Tree
 tree 7 inches diameter, on the
 North
 Metal Location Poster is on a
 ASPAN



(Make sketch of topography near Corner)

U. S. Department of Agriculture

FOREST SERVICE

Chippewa NATIONAL FOREST

CORNERS OF THE PUBLIC SURVEY

T. 60 N. R. 26 W. 4th P. Mer.

Quarter Corner common to sections 29, and 30

Corner consists of a 1 1/2" x 20" iron pipe in place
State condition Good

Dimensions above ground iron flush with road post 30 inches

Sketch grooves, letters, figures, or notches, on proper face or edge.

CARDINAL POSITION

DIAGONAL POSITION

Diagram showing cardinal positions: N, W, S, E.

Diagram showing diagonal positions: NW, SW, SE, NE.

Mound of _____ is located _____

Pits are located _____

Sketch markings of Bearing Trees (or Rocks) in proper box and fill blanks below, giving bearings from Corner to Trees and Distances in Links.

JBR

Grid of boxes for sketching bearing trees and rocks.

Species _____

Diameter _____

Bearing _____

Distance _____

Do you believe this to be a genuine Land Office Corner? no

If not, why? Bt's and corner lost. Established by original line tree and lake shore south.

J.A. Gjelhaug

(Signature)

Jr. Civil Engineer

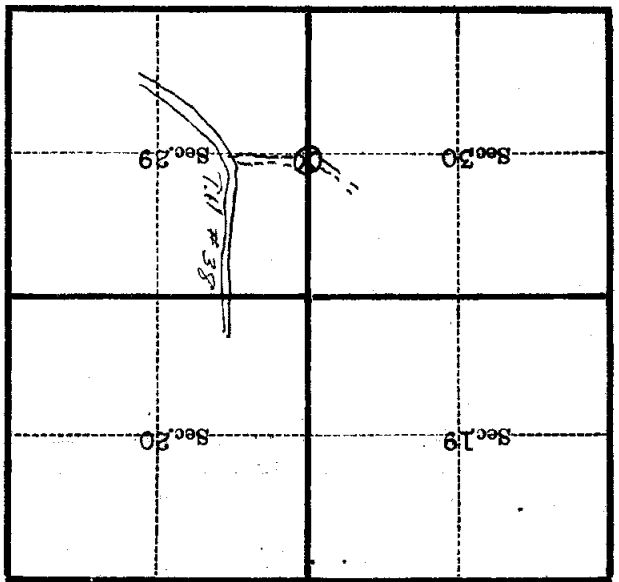
(Title)

7/2/37

(Date)

Metal Location Poster is on a Aspen tree 5 inches diameter, on the S.E. side of tree from which this Corner bears S. 55° E. 0.45 chains distant.

Give any further facts which will aid in finding this Corner again.



(Make sketch of topography near Corner)

T. 60N. R. 26W. 4th P. Mer.

Superior

U. S. Department of Agriculture
FOREST SERVICE

Posted

CHIPPEWA NATIONAL FOREST

CORNERS OF THE PUBLIC SURVEY

T. 60 N R. 26 W 4th Mer.

QUARTER Corner common to Sections
26, and 27

Corner consists of a WOODEN STAKE (~~not~~) in place
State condition ROTTED.

Dimensions above ground 36 inches

Sketch grooves, letters, figures, or notches, on proper face or edge.

CARDINAL POSITION

DIAGONAL POSITION

1/4			
-----	--	--	--

N W S E

--	--	--	--

NW SW SE NE

Mound of _____ is located _____

Pits are located _____

Sketch markings of Bearing Trees (or Rocks) in proper box and fill blanks below, giving bearings from Corner to Trees and Distances in Links.

Species _____

Diameter _____

Bearing _____

Distance _____

Do you believe this to be a genuine Land Office Corner? _____

If not, why? _____

Ralph J. Johnson

(Signature)
Caleb Foreman

(Title)

Oct 10, 1934

(Date)

.....
.....
.....
.....
.....

TREES BLAZED IN N-S + E-W
DIRECTION FROM CORNER

Corner again.

Give any further facts which will aid in finding this

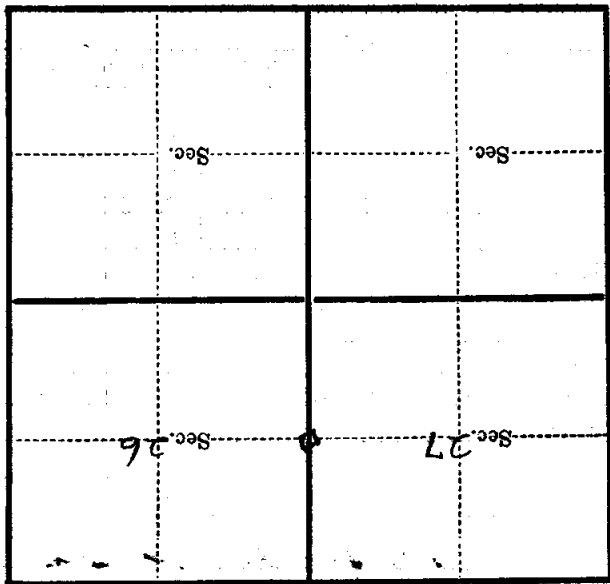
..... chains distant.

from which this Corner bears S. 5 1/2° W

side of TREE

tree 5 1/2 inches diameter, on the SOUTH

Metal Location Poster is on a CEDAR



(Make sketch of topography near Corner)

T. 60N R. 26W 4th Mer.