

U. S. Department of Agriculture
FOREST SERVICE

J-K-13

Chippewa NATIONAL FOREST

CORNERS OF THE PUBLIC SURVEY

T. 59N R. 27W 4th Mer.

M.C. Corner common to Sections
15, and 16

Corner consists of a Cedar post in place

State condition Good

Dimensions above ground 20 inches

Sketch grooves, letters, figures, or notches, on proper face or edge.

CARDINAL POSITION

DIAGONAL POSITION

--	--	--	--

N W S E

	16	15	
--	----	----	--

NW SW SE NE

Mound of _____ is located _____

Pits are located _____

Sketch markings of Bearing Trees (or Rocks) in proper box and fill blanks below, giving bearings from Corner to Trees and Distances in Links.

Species _____

Diameter _____

Bearing _____

Distance _____

Do you believe this to be a genuine Land Office Corner? yes

If not, why? _____

E. S. E.

(Signature)

12/21-34

(Date)

(Title)

Corner again.

Give any further facts which will aid in finding this

chains distant.

0.73

N 12° E

from which this Corner bears

Tree

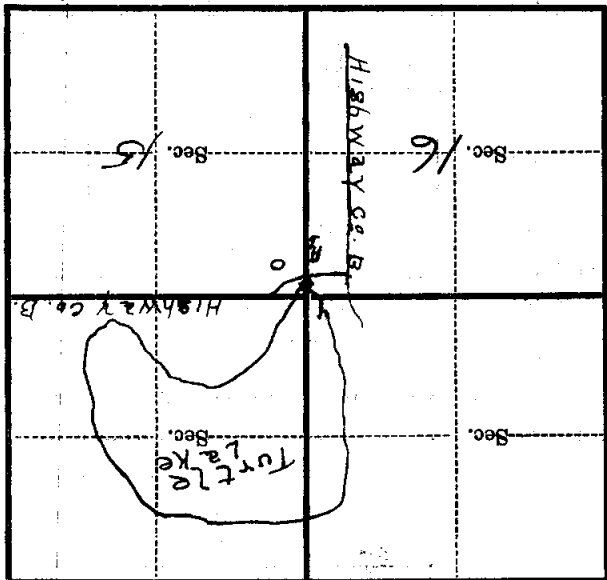
side of

N. E.

tree 5 inches diameter, on the

Branch

Metal Location Poster is on a



(Make sketch of topography near Corner)

J.K-13

Mer.

4th

R. 27W

T. 59N

U. S. Department of Agriculture
FOREST SERVICE

J-K-13

Chippewa NATIONAL FOREST
CORNERS OF THE PUBLIC SURVEY

T. 59N R. 27W 4 Mer.

M. C. Corner common to Sections
15, and 16

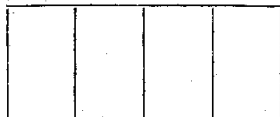
Corner consists of a Cedar post in place
State condition Good

Dimensions above ground 20 inches

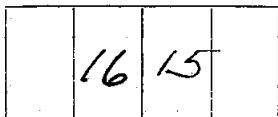
Sketch grooves, letters, figures, or notches, on proper face or edge.

CARDINAL POSITION

DIAGONAL POSITION



N W S E



NW SW SE NE

Mound of _____ is located _____

Pits are located _____

Sketch markings of Bearing Trees (or Rocks) in proper box and fill blanks below, giving bearings from Corner to Trees and Distances in Links.



Species _____

Diameter _____

Bearing _____

Distance _____

Do you believe this to be a genuine Land Office Corner? Yes

If not, why? _____

EA Sagen

(Signature)

12-21-37

(Date)

CCC Enrollee

(Title)

Corner again.

Give any further facts which will aid in finding this

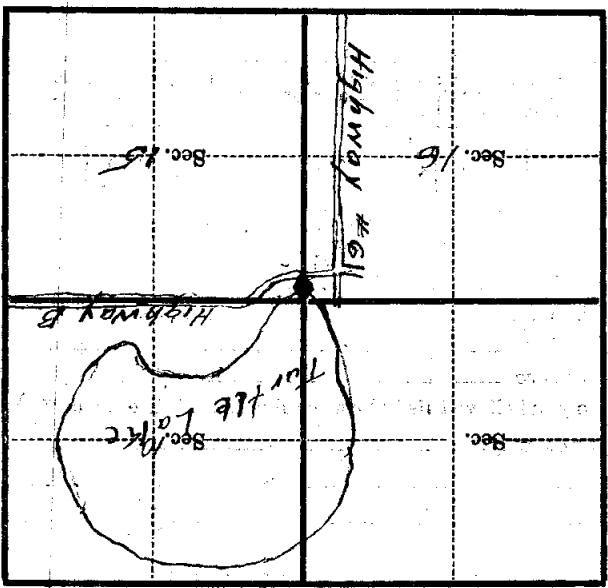
0.73 chains distant.

from which this Corner bears N 12 E

side of tree

tree 5 inches diameter, on the N E.

Metal Location Poster is on a Birch



(Make sketch of topography near Corner)

J.R-13

Mer. 4

T. 59N R. 27W

U. S. Department of Agriculture

FOREST SERVICE

Posted
Chippewa NATIONAL FOREST JK13

CORNERS OF THE PUBLIC SURVEY

T. *59N* R. *27W* *4th* Mer.

M.C. Corner common to Sections
.....,, *15*, and *16*

Corner consists of a *Cedar post* () in place

State condition *Good*

Dimensions above ground *20* inches

Sketch grooves, letters, figures, or notches, on proper face or edge.

CARDINAL POSITION

DIAGONAL POSITION

--	--	--	--

N W S E

	<i>16</i>	<i>15</i>	
--	-----------	-----------	--

NW SW SE NE

Mound of is located

Pits are located

Sketch markings of Bearing Trees (or Rocks) in proper box and fill blanks below, giving bearings from Corner to Trees and Distances in Links.

Species

Diameter

Bearing

Distance

Do you believe this to be a genuine Land Office Corner? *yes*

If not, why?

.....

.....

E. A. Sagen

(Signature)

12/21-34

(Date)

E. E. Emulle

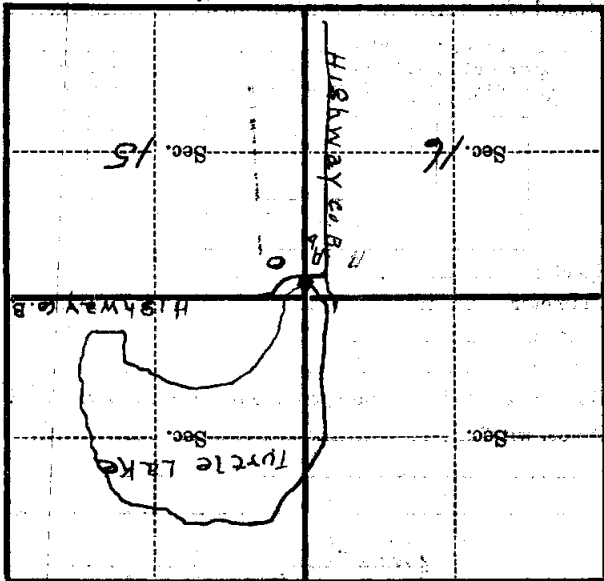
(Title)

Corner again.

Give any further facts which will aid in finding this

chains distant.

Metal Location Poster is on a *Bunch* *N.E.*
 tree *5* inches diameter, on the *side of* *Tree*
 from which this Corner bears *0.13*
N. 12° E.



(Make sketch of topography near Corner)

J.K-13

T. 59N R. 27W Mer. 4A